

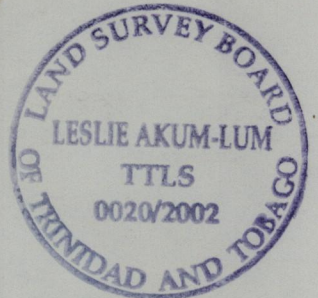
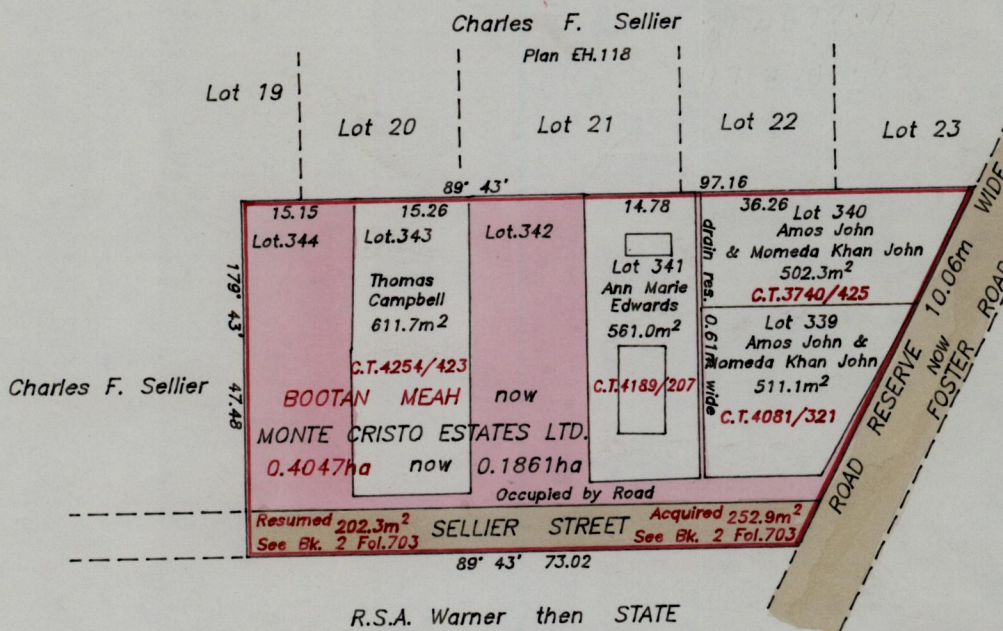
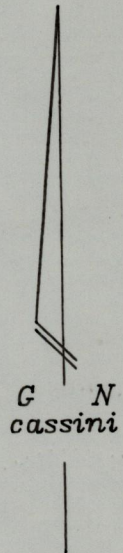
1328

108

Process ID# 73012
R.P.O. Vol. 79 Fol. 625
C.T. Vol. 358 Fol. 363

Ward of Manzanilla
County of St. Andrew
Cadastral Sheet C.22.M $\frac{25F}{1/b}$

Remaining Portion Plan
Vol. 4592 fol. 231



See Plan NN.29
See Bk.1053 Vol.2 Fol.703
Bk.715 Fol.132

Approved *[Signature]*
Director of Surveys
25.05.07

Esau Hosen

SCALE 1/1000
Distances are in metres

Note: To obtain compass bearings add 17 minutes.

This is a true copy of a diagram of zero point four zero four seven hectares Originally transferred to BOOTAN MEAH shewing a portion coloured pink and containing zero point one eight six one hectares being the remainder after four previous transfers, one resumption and one acquisition of other portions of the land.

In accordance with rule 25 (1) of the Land Surveyors' Regulations 1998, I certify that this plan is correct.

Checked by *[Signature]* *[Signature]*

Entered *[Signature]* Trinidad & Tobago Land Surveyor 20th March 2007