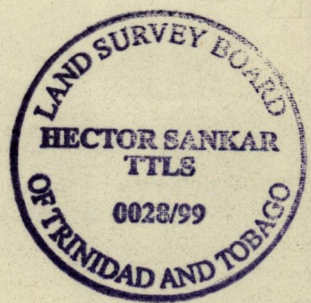


1328



1(1)4

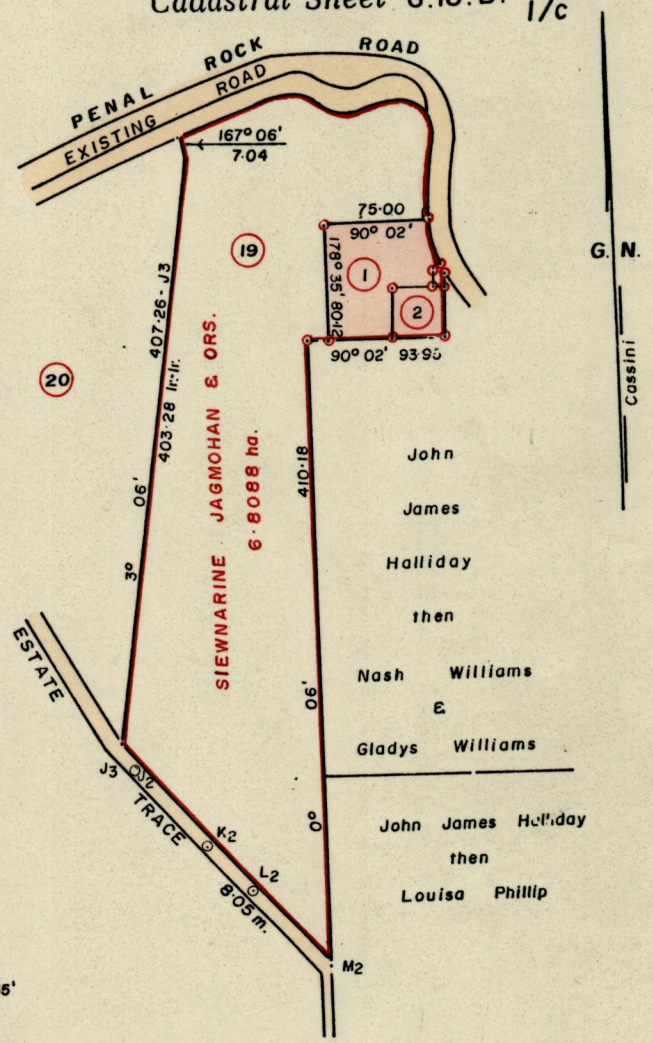
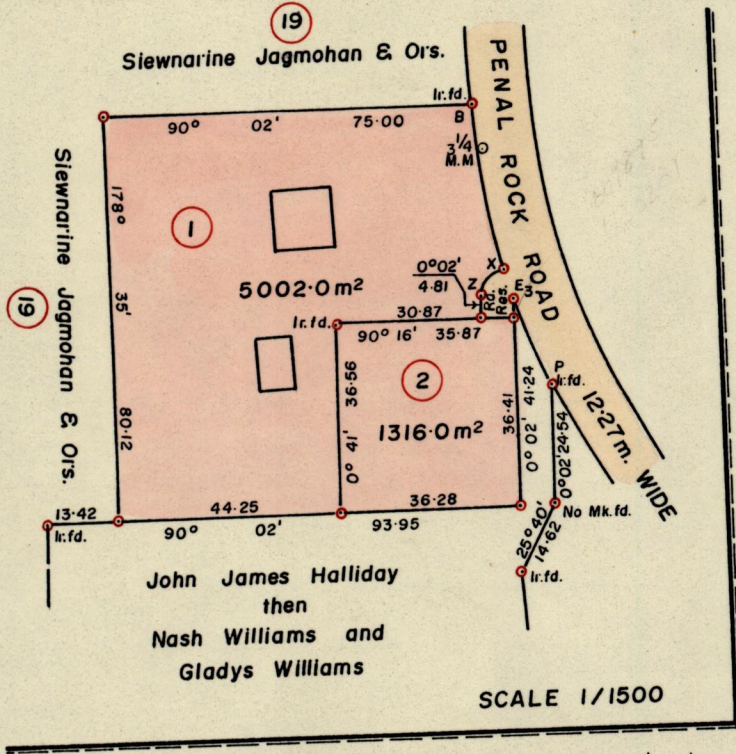
Process JDT 75553

B N^o 4031

Vol. 4602
R.P.O. Vol. 104
C.T. Vol. 2952

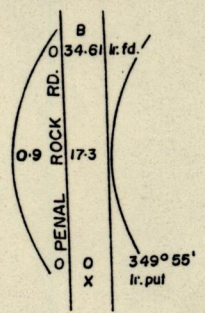
Fol. 241
Fol. 561
Fol. 187

Ward of Siparia
County of St. Patrick
Cadastral Sheet G.18.B. 73C
1/c



M2 - L2	315° 55'	71.23
L2 - K2	313° 59'	41.54
K2 - J2	318° 05'	81.07
J2 - J3	328° 48'	0.40
E3 - P	158° 41'	18.00
B - 3/4 M.M.	166° 49'	9.01
Z - X	36° 25'	5.93

(Rad. 50m.)



Approved *[Signature]*
Director of Surveys

Denotes Iron put unless otherwise stated.
Bearings are based on Solar Observations

Note: To obtain compass bearings add/subtract 2 minutes Distances are in metres

PLAN of 2 Parcels of land coloured pink in the Ward of Siparia
Containing together six thousand three hundred and eighteen square metres

Surveyed by me, with due authority, in July 1998
In accordance with Rule 25(I) of the Land Surveyors Regulations 1998 I certify that this plan is correct.
~~I certify that I have complied with rule 76 under section 14(2)(d) of the~~
Land Surveyors' Ordinance, 1952, and that this plan is correct.

Checked by *[Signature]*

Entered *[Signature]* Land Surveyor, Trinidad and Tobago 2nd June 19.9.9

Original Plan D.C. 82

1 - Vol. 4602 fol. 247

Dhan Mohan, Steve Marjadsingh,
Toolsiedaye, Gerald & Jairam Dhan

2 - Vol. 4825 Fol 151

Sandua Remrattan & Resham
Remrattan.

15 FEB 2000
Lands and
Surveys
Division