

1308

1333

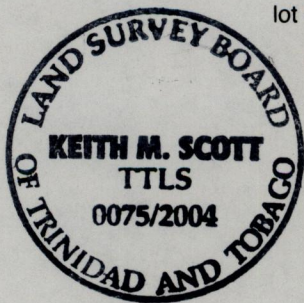
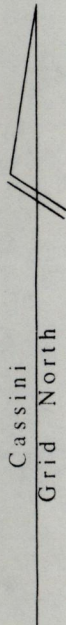
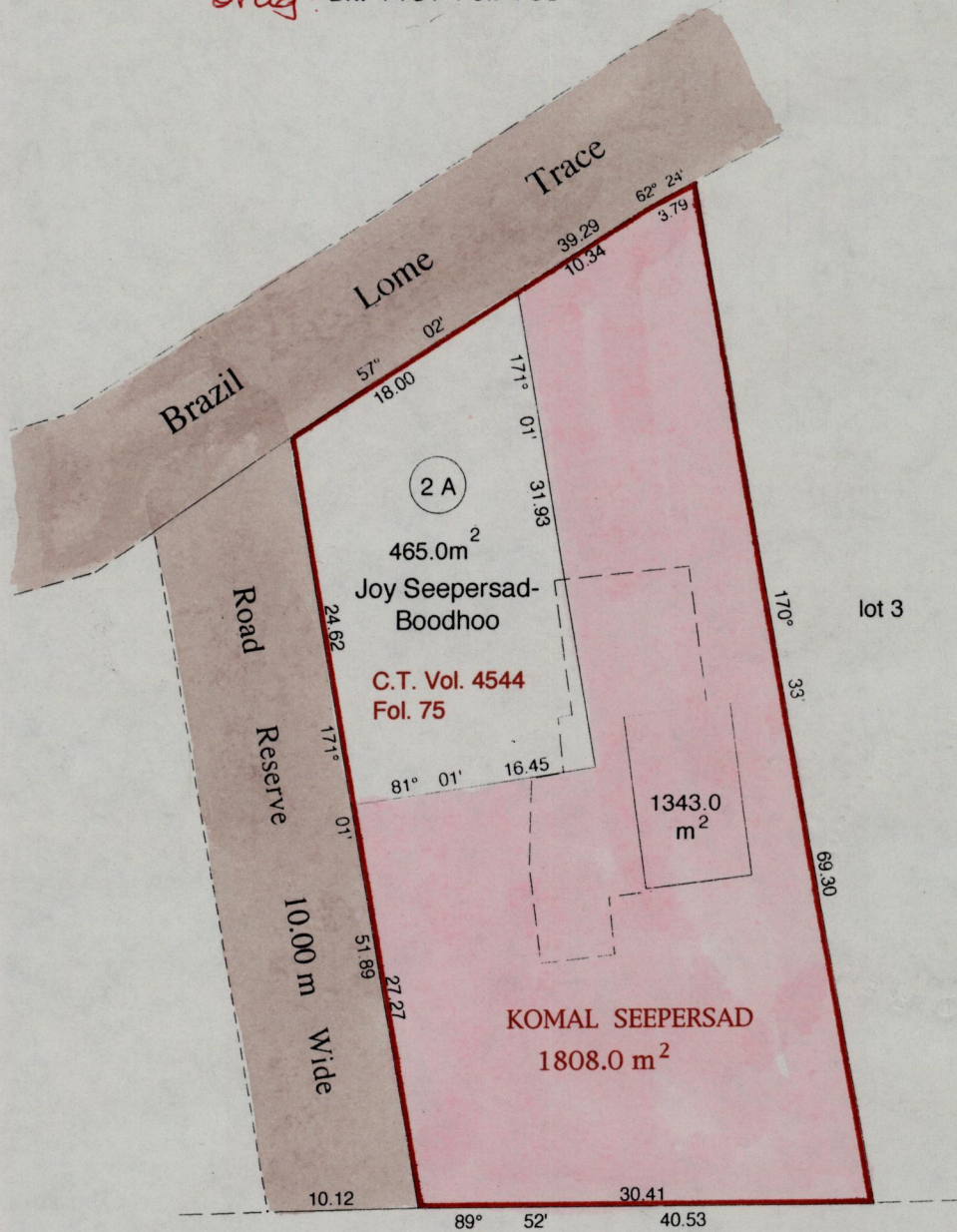
98

REMAINING PORTION

Process ID# 66394  
R.P.O. Vol. 341 Fol. 391  
C.T. Vol. 3450 Fol. 359  
Vol. 4656 Fol. 127  
U.P.R.N. No.

Cadastral Sheet D.5.E. 24F  
4/c  
Ward of San Rafael  
County of St. George

Vide Bk. 1289 Fol. 26  
Orig: Bk. 1197 Fol. 165



lot 4 Junior & Adhiraj Seepersad

E. 688725 ADHIRAJ SEEPERSAD  
N. 1167312

SCALE 1:500  
Distances are in metres

Approved: *[Signature]*  
Director of Surveys  
2005-3-14

Bearings are Cassini Grid based on Solar Obs.  
To obtain compass bearings add 6 minutes

This is a true copy of a diagram of one thousand eight hundred and eight point zero square metres originally transferred to Komal Seepersad showing a portion coloured pink and containing one thousand three hundred and forty three point zero square metres being the remainder after a previous transfer of another portion of the land.

In accordance with regulation 25 (1) of the Land Surveyors' Regulations 1998, I certify that this plan is correct.

Checked by: *[Signature]* 2005-2-21

*[Signature]*

Entered on: *[Signature]* Trinidad & Tobago Land Surveyor 9<sup>th</sup> November 2004.