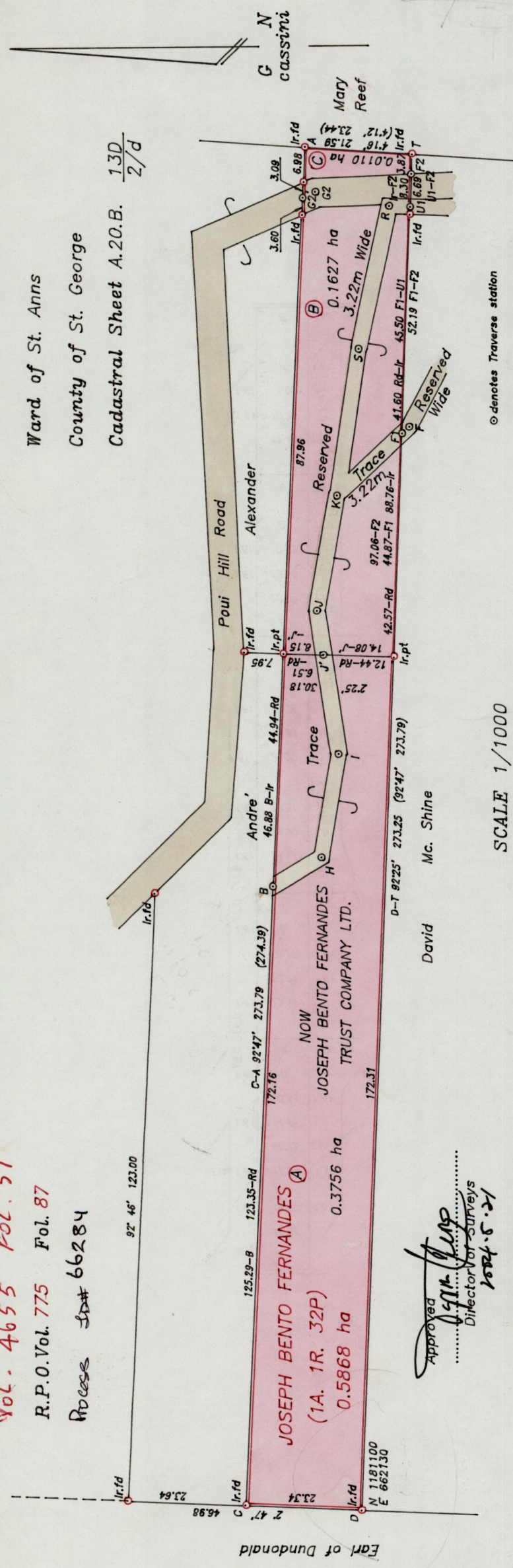


Vol. 4655 Pol. 51
R.P.O. Vol. 775 Fol. 87
Process Ld# 66284

Ward of St. Anns
County of St. George
Cadastral Sheet A.20.B. 13D
2/d



Bearings based on Magnetic Needle
Coordinates scaled from 1/10,000 sheet.
Note: To obtain compass bearings subtract 2 minutes.

Approved
[Signature]
Director of Surveys
2004.5.21

SCALE 1/1000
Distances are in metres

o denotes Traverse station
P.T.O. for offset notes
See S.O. 132/33
See Bk: 729/193
See J.D 78

PLAN of three Parcels of land coloured Pink in the Ward of St. Anns

Containing together zero point five four nine three hectares

Surveyed by me with due authority in April 1998

In accordance with regulation 25(1) of the Land Surveyors' Regulations 1998,

I Certify that this Plan is correct.

Checked by *[Signature]*
Entered *[Signature]*
Trinidad & Tobago
Land Surveyor
Volume J\JAL\Fernandes 1

