

REMAINING PORTION PLAN

136
79

R.P.O. Vol.

Fol.

1308

Cadastral Sheet B.24.F. 24B

C.T. Vol. 1950

Fol. 59

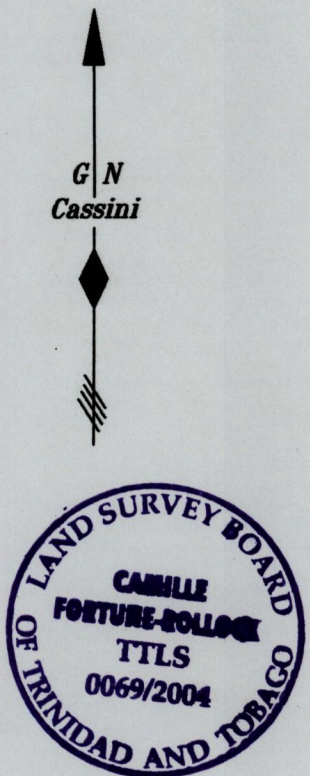
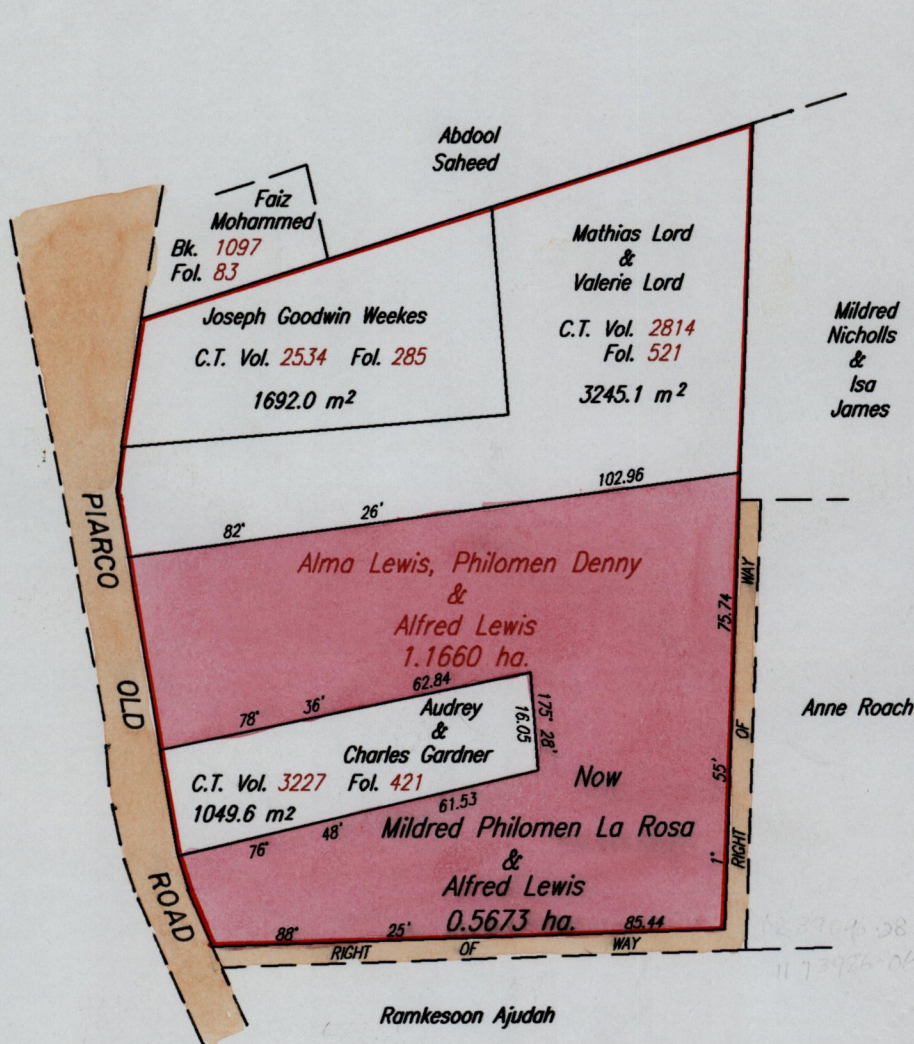
Ward of Tacarigua

County of St. George

VOL. 4618 FOL 287

Process ID#66273

Vide Bk. 1002 Fol. 140 Original
Bk. 1117 Fol. 12
Bk. 1137 Fol. 123
Bk. 1179 Fol. 63



E 683159
N 1174165

Approved
Director of Surveys
2004-9-3

SCALE 1:1250
Distances are in METRES

This is a true copy of a diagram of one point one six six zero hectares originally granted to Alma Lewis, Philomen Denny & Alfred Lewis, showing a portion coloured pink and containing zero point five six seven three hectares being the remainder after three previous transfers of another portion of the land.

In accordance with Regulation 25 (1) of The Land Surveyors' Regulations 1998, I certify that this plan is correct.

Checked by
Entered on
Camille Fortune-Rollock TTLS
Trinidad & Tobago Land Surveyor
9th August... 2004
C:\LESS 2004\LEWIS, ALMA\042

MILDRED PHILOMEN LA ROSA
&
ALFRED LEWIS