

Process ID# 66271

Vol 4592 Fol 511

R.P.O. Vol. 64 Fol. 263

C.T. Vol. 1528 Fol. 199

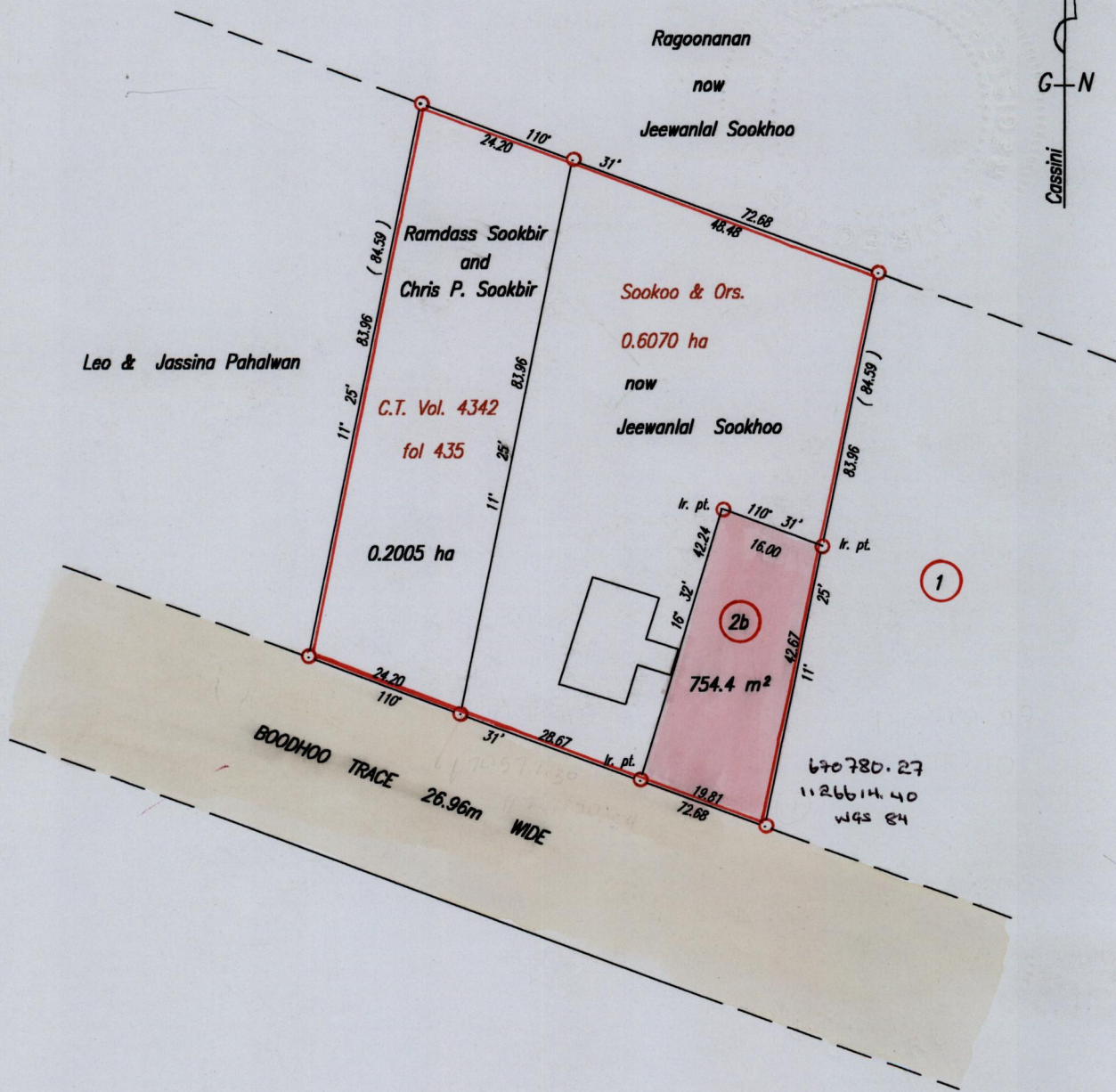
Ward of Naparima

County of Victoria

Cadastral Sheet G.13.C. 63F  
1/b

Bk. 1267 fol 7

Bk. 944 fol 106 Original



Approved : *[Signature]*  
Director of Surveys

2004-8-12

*Jeewanlal Sookhoo*  
Jeewanlal Sookhoo

SCALE 1:1000

○ denotes iron found except otherwise stated.

Bearings are Cassini Grid based on solar observations.

Plan of a Parcel of land coloured pink in the Ward of Naparima  
Containing seven hundred and fifty four point four square metres.

Surveyed by me, with due authority, in June 2003.

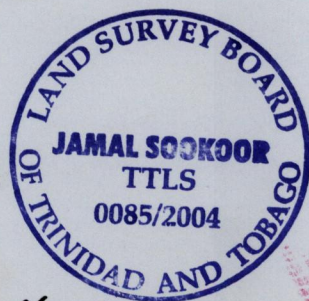
In accordance with Regulation 25(1) of the Land Surveyors' Regulations 1998,  
I certify that this plan is correct.

Checked by *M.M.* 28/09/04

*[Signature]*

Entered *C.M.S.* 11/09/2013  
*[Signature]*

Trinidad & Tobago Land Surveyor 14th January 2004



Distances are in Metres