

No 24253

Process ID#66182

R.P.O. Vol. 43

Fol. 601

Ward of Savana Grande

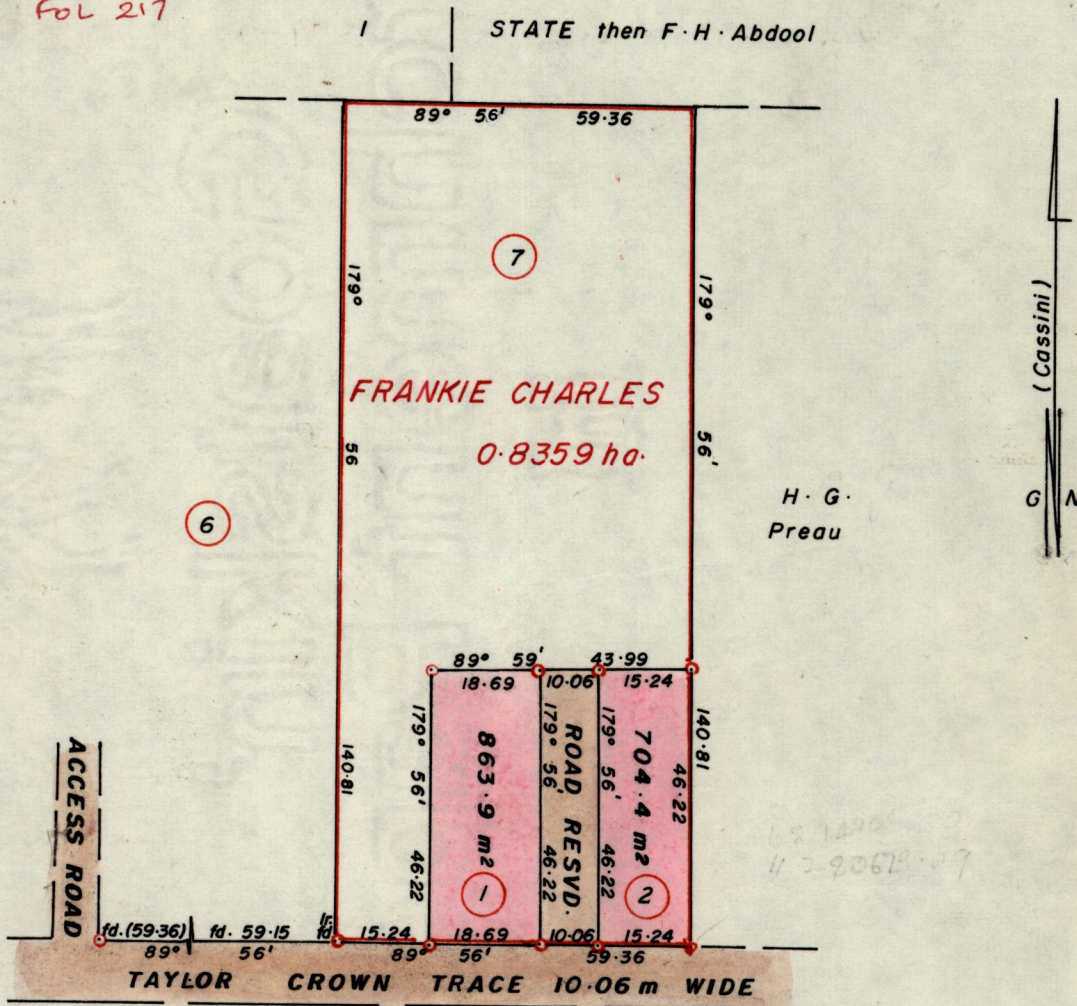
County of Victoria

C.T. Vol. 2387

Fol. 235

Cadastral Sheet G·10·N· 64B / 4/d

Vol. 4598 Fol 217



Approved

*Alwyn Philp*  
 Director of Surveys  
 88.12.21

○ Iron put at all corners except stated otherwise  
 SCALE 1:1250

Note: To obtain compass bearings add/subtract 4 minutes Distances are in metres

PLAN of  $\frac{2}{3}$  Parcel of land coloured pink in the Ward of Savana Grande  
 Containing together one thousand five hundred and sixty eight point three sq. metres  
 Surveyed by me, with due authority, in MAY 1988

I certify that I have complied with rule 76 under section 14(2)(d) of the  
 Land Surveyors' Ordinance 1952, and that this plan is correct.

Checked by *GR 20/12/88* *Winston Ranchea*  
 Entered *Belmonte* Land Surveyor, Trinidad *21st May* 1988

Original Survey. 980:70

3

Lot 1

Lot 2 Vol. 4598 fol. 221 David & Violet Jagroop