

642

1308

L. & S.—56

64

REMAINING PORTION

63F

R.P.O. Vol. 103 Fol. 629

Cadastral Sheet G.13.G. 1/d

C. of T. Vol. 1151 Vol. 147

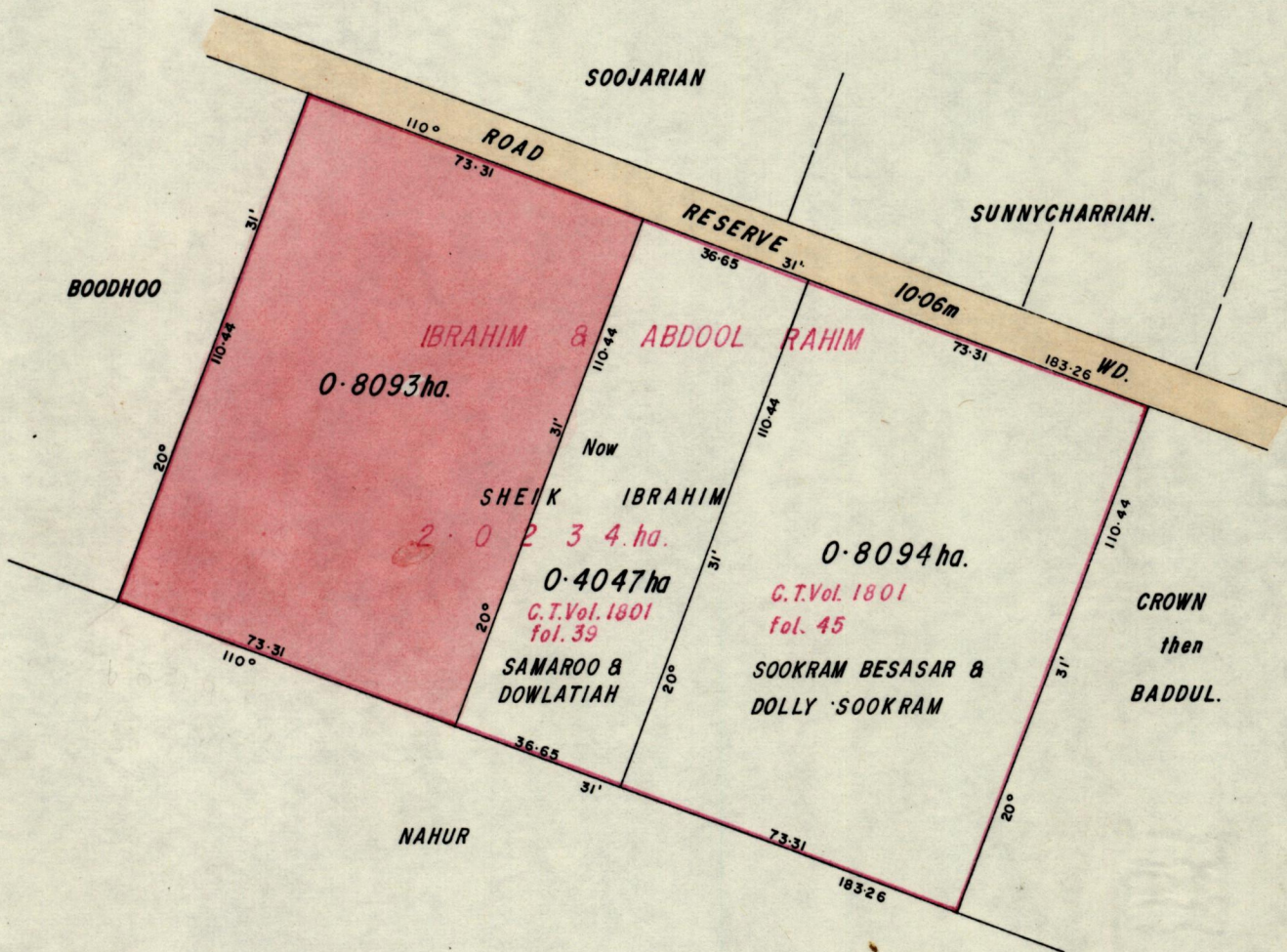
Ward of Siparia

Vol. 4607 Bl. 471

County of St. Patrick.

Process 30# 66250

G. N.



BK. 1005 fol 4

Original BK. 393:141

Shafique Ibrahim

SCALE 1/1500

Distances are in metres.

Approved

[Signature]
Director of Surveys
90.2.26

Note: To obtain compass bearings subtract 1 minutes

This is a true copy of a diagram of two point zero two three four hectares, originally
 transfer granted to IBRAHIM & ABDOOL RAHIM, shewing a portion
 coloured pink and containing zero point eight zero nine three hectares, being the remainder
 after two previous transfer of another portion of the land.
 the dividing lines having been run in conformity with Rule 76 under Sec. 7(d) of Cap. 27. No. 2 and duly certified
 by the Director of Surveys.

Checked by *[Signature]*
116/90

Entered on C.M.S. 20.08.2013

[Signature]
Land Surveyor, Trinidad, May 22nd 1990.

~~Original Survey Bk. 1005 fol. 4.~~

Original Survey Bk 393 fol. 141