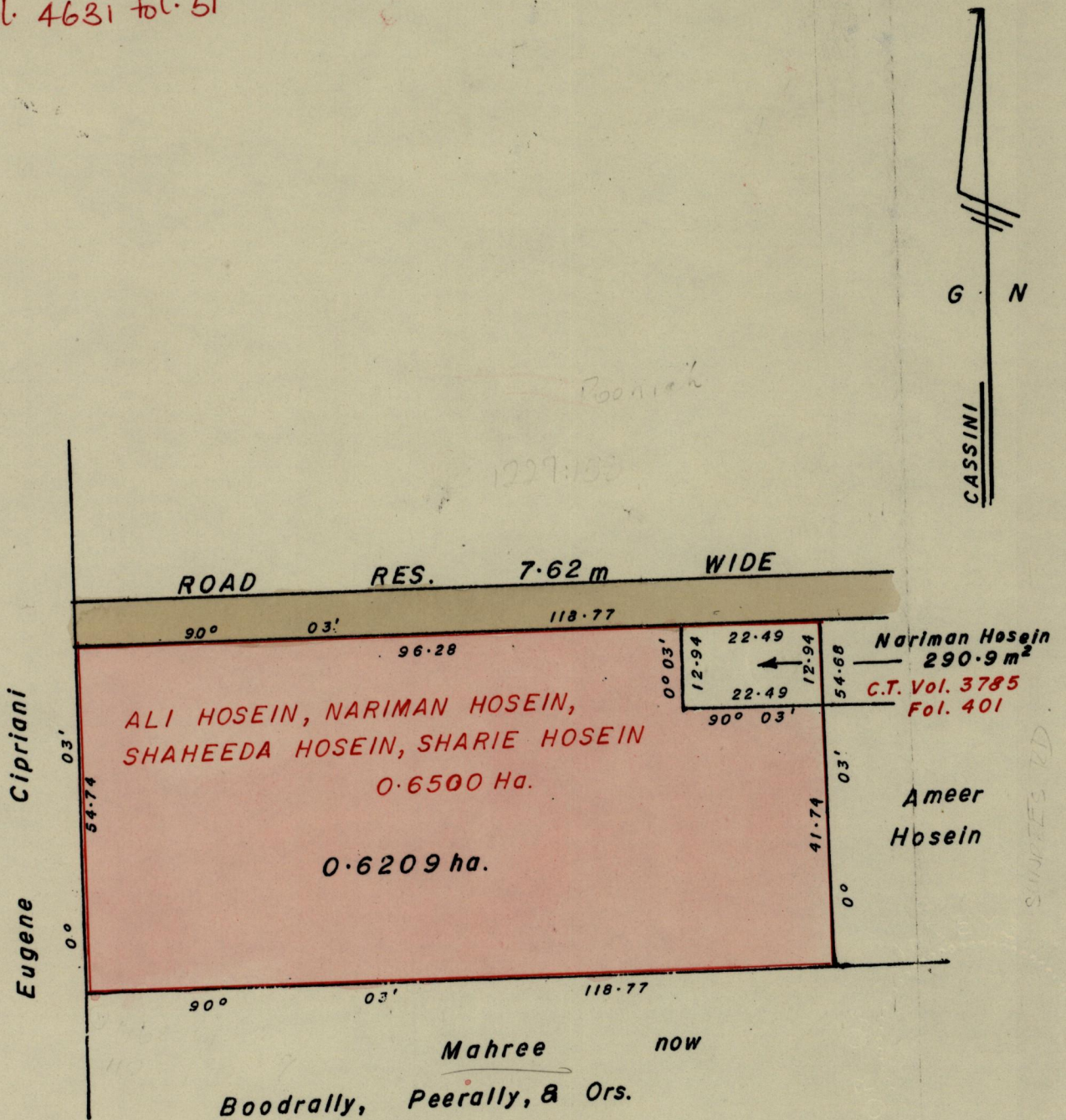


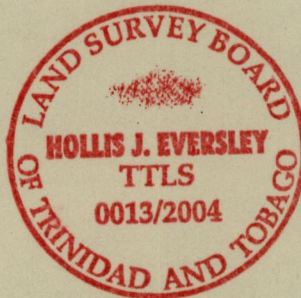
Process J~~24~~ 66234
R.P.O. Vol. 97
C.T. Vol. 3145
Vol. 4631 fol. 51

REMAINING PORTION
Fol. 161
Fol. 75

Ward of Siparia.
County of St. Patrick.
Cadastral Sheet G.13.M. 63E
4/d



668216.07
1123101.67
14584



See 1117: 28
Rasheed & Shaheda Ranjoh
Bk. 1110: 57 Orig Sur.
See 1227: 158

Scale 1 : 1000.
Distances are in METRES.

Approved
Director of Surveys.
2004.9.3

This is a true copy of a diagram of zero point six five zero zero hectare
Originally transferred to ALI HOSEIN, NARIMAN HOSEIN, SHAHEEDA HOSEIN,
and SHARIE HOSEIN, showing a portion coloured pink and containing
zero point six two zero nine hectare being the remainder
after one previous transfer of another portion of the land
In accordance with Regulation 25(1) of the Land Surveyors' Regulations 1998,
I certify that this plan is correct.

Checked by
Entered
21-08-2012

Trinidad and Tobago Land Surveyor 2004.