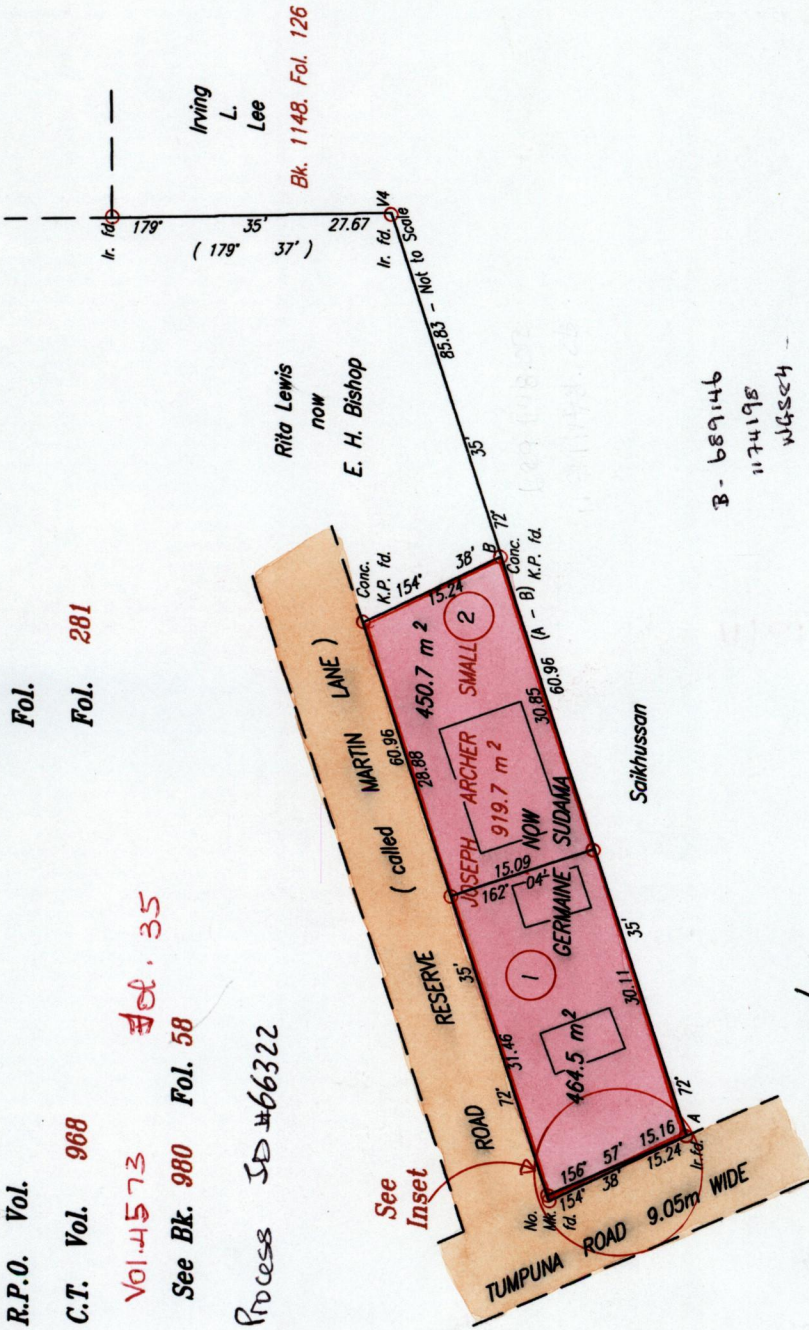


R.P.O. Vol. Fol.
C.T. Vol. 988 Fol. 281

Vol. 4573 Fol. 35
See Bk. 980 Fol. 58

Process SD #66322



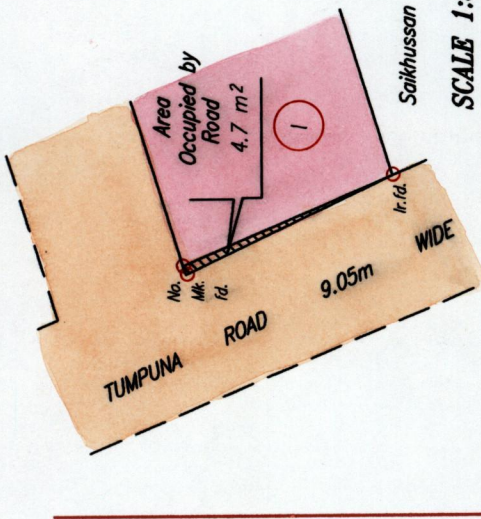
Approved
Director of Surveys
25.07.23

○ Denotes Iron put except where otherwise stated
Bearings are Cassini Grid based on Solar Observations

PLAN of 2 Parcels of land coloured pink in the Borough of Arima
Containing together nine hundred and fifteen point two square metres
Surveyed by me, with due authority, in July 2001

In accordance with Regulation 25 (1) of The Land Surveyors' Regulations 1998.

I certify that this plan is correct
Checked by M.M. 21/08/02
Entered on M.S. 27.08.2003
Trinidad & Tobago Land Surveyor



SCALE 1:500
Distances are in METRES



20 AUG 2002
Lands and
Surveys
Division

Lot 1 Vol 4493 fol. 209 PAUL JAIKARAN & DAVID JAIKARAN

Lot 2 Vol. 4575 fol. 41 Melville John.

