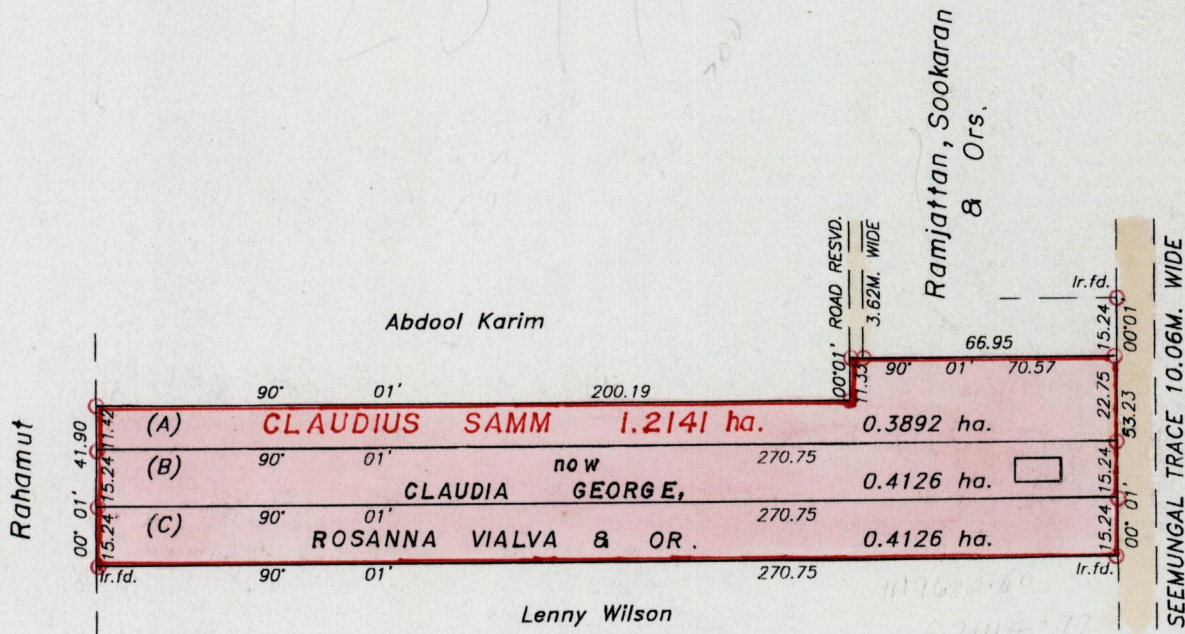


Process SD#66310  
R.P.O Vol. 123 Fol. 117  
C.T. Vol. 865 Fol. 435

Ward of Siparia  
County of St. Patrick  
Cadastral Sheet G. 18.G. 73.C  
1/d

U.P.R.N. No.

Vol. 456T fol. 393



RECOMMENDED  
14/2/04  
DATE COUNTY MEDICAL OFFICER HEALTH  
ST. PATRICK



Approved [Signature]  
Director of Surveys  
2004-3-31

Bk. 780 Fol. 158  
SCALE 1/2000

○ Denotes Iron put except stated otherwise.  
Bearings are based on Solar observations  
Note : To obtain compass bearing subtract 1 minutes.

Distances are in metres

Plan of 3 Parcels of land coloured pink in the Ward of Siparia  
Containing together one point two one four four hectares  
Surveyed by me with due authority, in November 1998  
In accordance with <sup>Regulation</sup> Rule 25 (1) of the Land Surveyors Regulations 1998,  
I certify that this plan is correct.

Checked by [Signature]  
17-03-04  
11-02-04

[Signature]

Entered LMS 04.09.2003  
[Signature]

Trinidad & Tobago, Land Surveyor. 29th March 2000

Orig Bk 163: 200, 2 170

Lot (A) Vol. 4567 fol. 399 HUXLEY GEORGE.

Lot (B) Vol. 4567 fol. 407 WILFRED SAMM.

Lot (C) Vol. 4567 fol. 415 ROSANA VIALVA GEORGE.

13 JUN 2001  
Lands and  
Surveys  
Division

1289/125