

No 6717

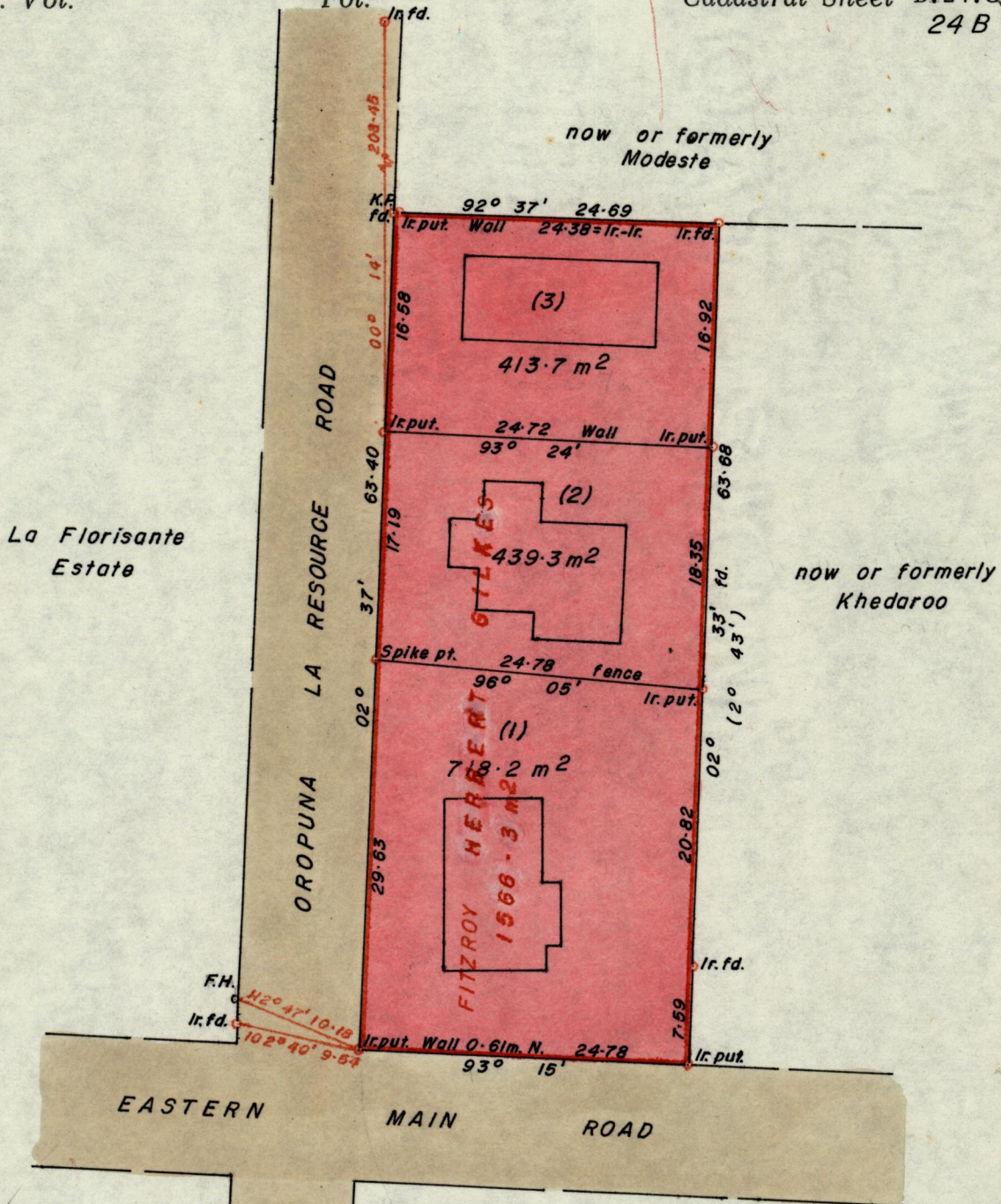
Process ID#66297

Vol. 4129
R.P.O. Vol. 1166
C.T. Vol.

Fol. 269
Fol. 207
Fol.

Ward of Arima
County of St. George
Cadastral Sheet B.24.C, B
24 B

Cassini
G.N.



Approved

J.B. Joseph
Director of Surveys
87-3-17

SCALE 1:500

Note: To obtain compass bearings add/subtract 10 minutes Distances are in metres

PLAN of a Parcel of land coloured pink in the Ward of Arima
Containing together one thousand five hundred and seventy one point two square metres
Surveyed by me, with due authority, in September 1979

I certify that I have complied with rule 76 under section 14(2)(d) of the
Land Surveyors' Ordinance 1952, and that this plan is correct.

Checked by *J.B. Joseph* 87-3-17

Winton Ramcharan

Entered *Belmont*

Land Surveyor, Trinidad 12th March 1980

Original Survey BK 886/109

LOT 1/ Vol. 4129 Fol. 279 Daphane Gilkes - Sotillo

LOT 2/ Vol. 4129 Fol. 287 Beulah Merle Gilkes - Rudolph

LOT 3/ Vol. 4129 Fol. 283 Fitz Edmund Gilkes -

