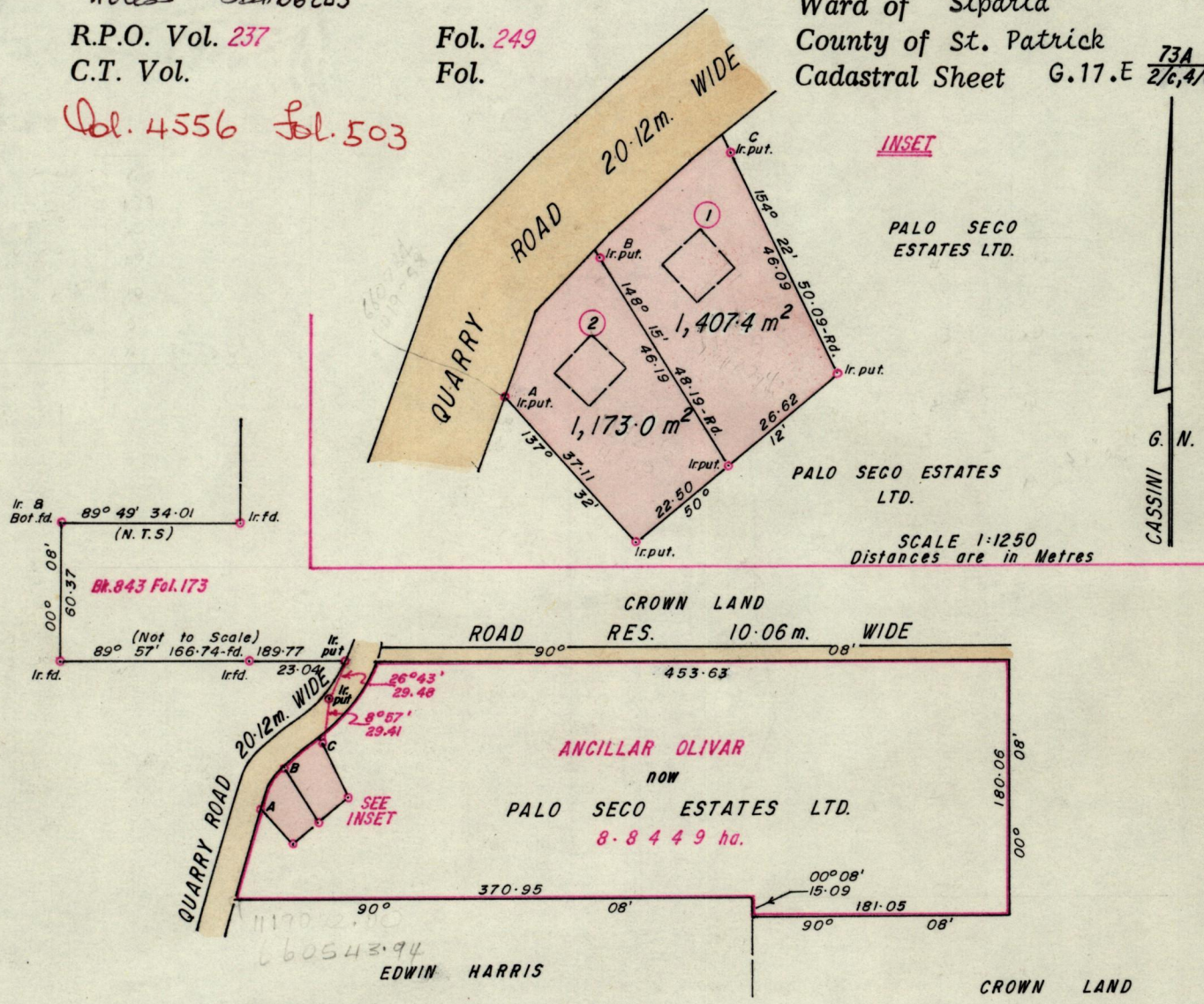


No 23342

Process SD#66283  
R.P.O. Vol. 237  
C.T. Vol.  
Vol. 4556 Fol. 503

Fol. 249  
Fol.

Ward of Siparia  
County of St. Patrick  
Cadastral Sheet G.17.E <sup>73A</sup>/<sub>2/6,4/6</sub>



Approved *Louis Charles*

Director of Surveys 90-03-27

Bearings are Cassini Grid, based on Solar Obs. SCALE 1/4,752  
Note: To obtain compass bearings add/subtract minutes Distances are in metres

PLAN of 2 Parcelsof land coloured pink in the Ward of Siparia  
Containing together two thousand, five hundred and eighty point four square metres  
Surveyed by me, with due authority, in May 1989

I certify that I have complied with rule 76 under section 14(2)(d) of the  
Land Surveyors' Ordinance 1952, and that this plan is correct.

Checked by *gt 26/3/90*

Entered *Bdmate* Land Surveyor, Trinidad 19th September 1989



Original Survey Bk. 485 fol. 273.

1. Vol 4536 Fol 511 LAL NANAN

2. Vol 4536 Fol 513 LAL NANAN

