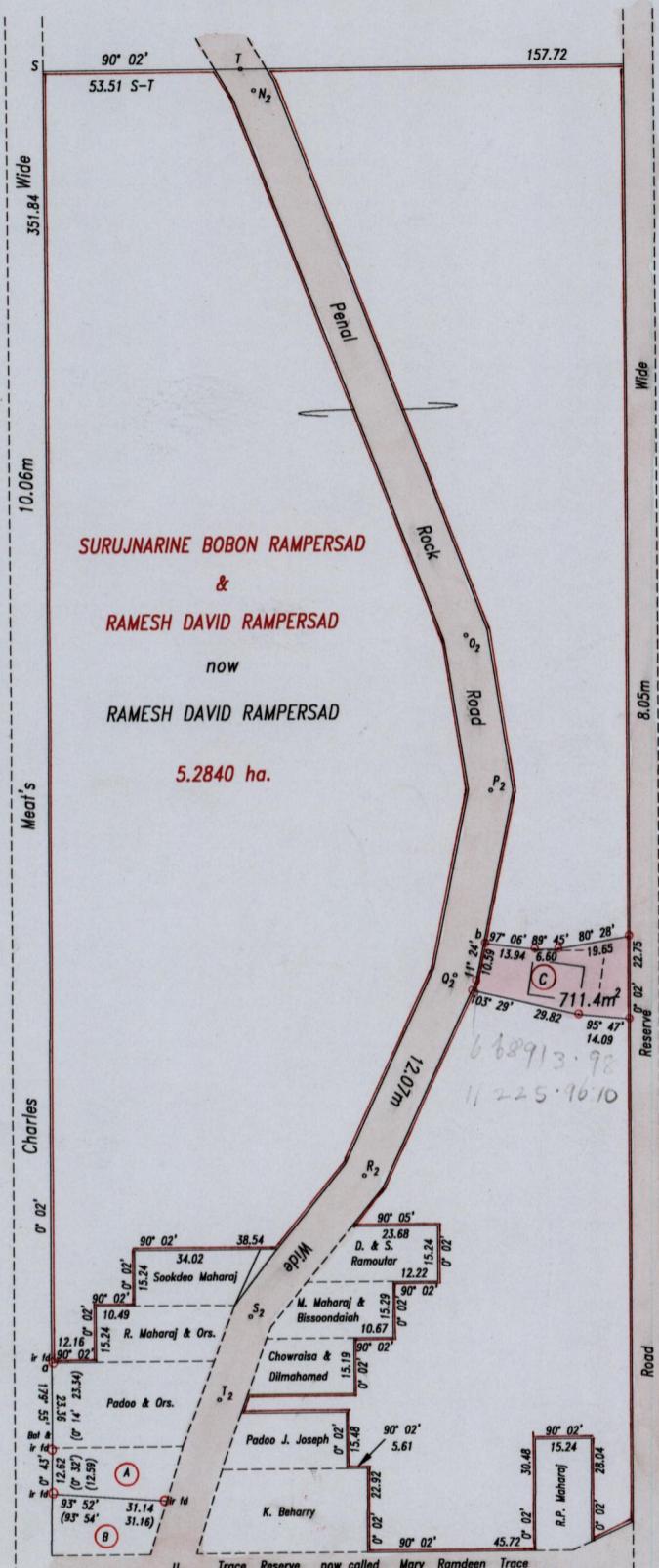
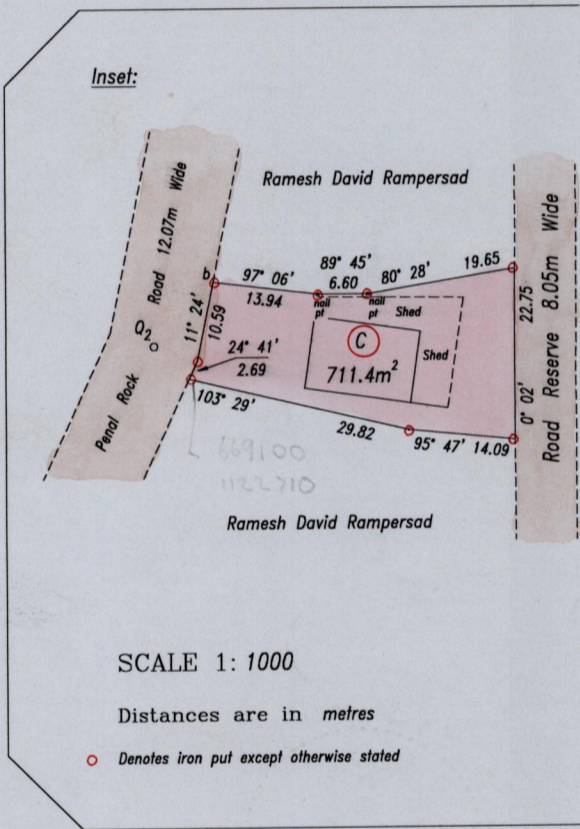


now or formerly
Louis Maloney



Legend		
Centre Line of Penal Rock Road 12.07m Wide		
T - N ₂	149° 23'	6.79
N ₂ - O ₂	159° 15'	159.33
O ₂ - P ₂	171° 12'	42.85
P ₂ - Q ₂	191° 24'	51.00
Q ₂ - R ₂	204° 41'	59.85
R ₂ - S ₂	219° 08'	49.29
S ₂ - T ₂	201° 06'	24.14
T ₂ - U ₂	195° 45'	83.48
a - b	46° 12'	163.45

G.N. Cassini



SCALE 1:1000

Distances are in metres

○ Denotes iron put except otherwise stated

Orig Bk 723:206
See Bk 1238:129
Ramesh David Rampersad

- References: Bk.391 Fol.123
Plan B.A. 36
Bk.723 Fol.146
Bk.723 Fol.165-167
Bk.723 Fol.206
Bk.834 Fol.197-199
Bk.1238 Fol.129
Bk.1211 Fol.168

Approved

 Director of Surveys
 250433

SCALE 1:2000

Distances are in metres

○ Denotes iron put except otherwise stated

Bearings are Cassini Grid based on Solar Observations

PLAN of a parcel of land coloured pink in the Ward of Siparia
 Containing seven hundred and eleven point four square metres
 Surveyed by me, with due authority, in May & June 1997

In accordance with Regulation 25(1) of the Land Surveyors' Regulations 1998, I certify that this plan is correct.

Checked by M.M. 9/2/04
 Entered Balwanto

L.A. Roopchand
 Trinidad & Tobago Land Surveyor 4/11/2003

