

R.P.O Vol. 95 Fol. 409 REMAINING PORTION PLAN
C.T. Vol. 555 Fol. 203

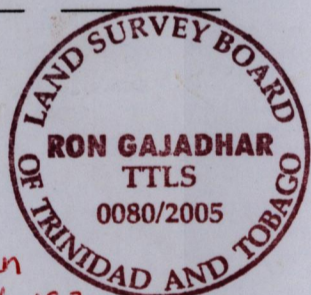
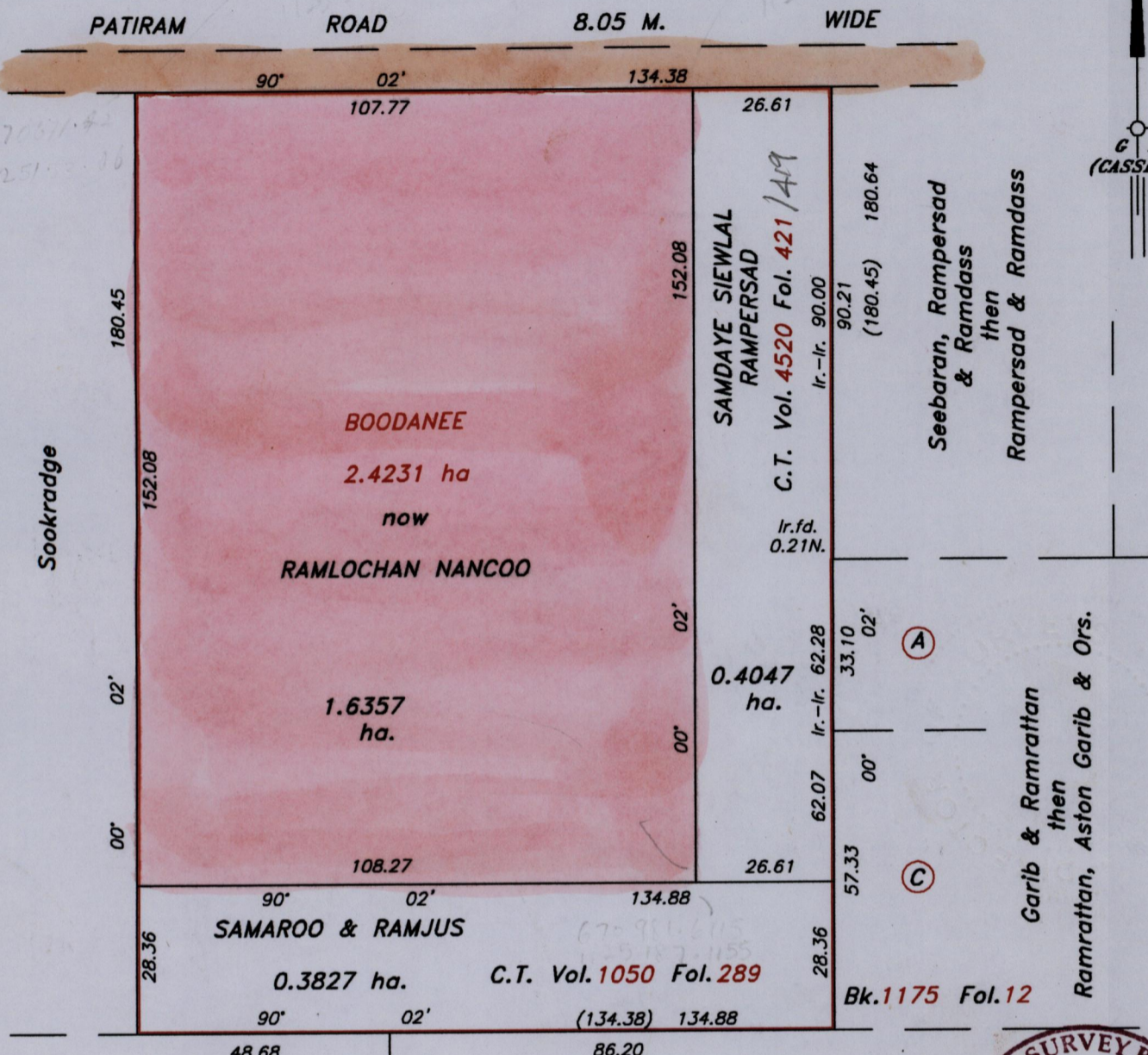
Ward of Siparia
County of St. Patrick
Cadastral Sheet G.13.G 63.F.
1/d

Original sur Bk 985 Fol. 175

U.P.R.N. No.

Vol. 4720 Fol. 123

Process ID#66376



Ranji + Chandra Ramlochan
See Fol. 182
Bk. 391 Fol. 72

Approved
Director of Surveys
2005-7-25

SCALE 1/1250

Note: Bearings are Cassinin Grid based on Solar Observation Distances are in metres
This is a true copy of a diagram of two point four two three one hectares originally, granted to BOODANEE, shewing a portion coloured pink and containing one point six three five seven hectares being the remainder after (2) two previous transfers of other portions of land.
In accordance with Regulation 25 (1) of the Land Surveyors' Regulations 1998, I certify that this plan is correct.

Checked by
Entered
18/7/05

.....
Trinidad & Tobago Land Surveyor..... 16.02 - 2005