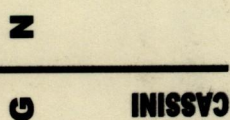
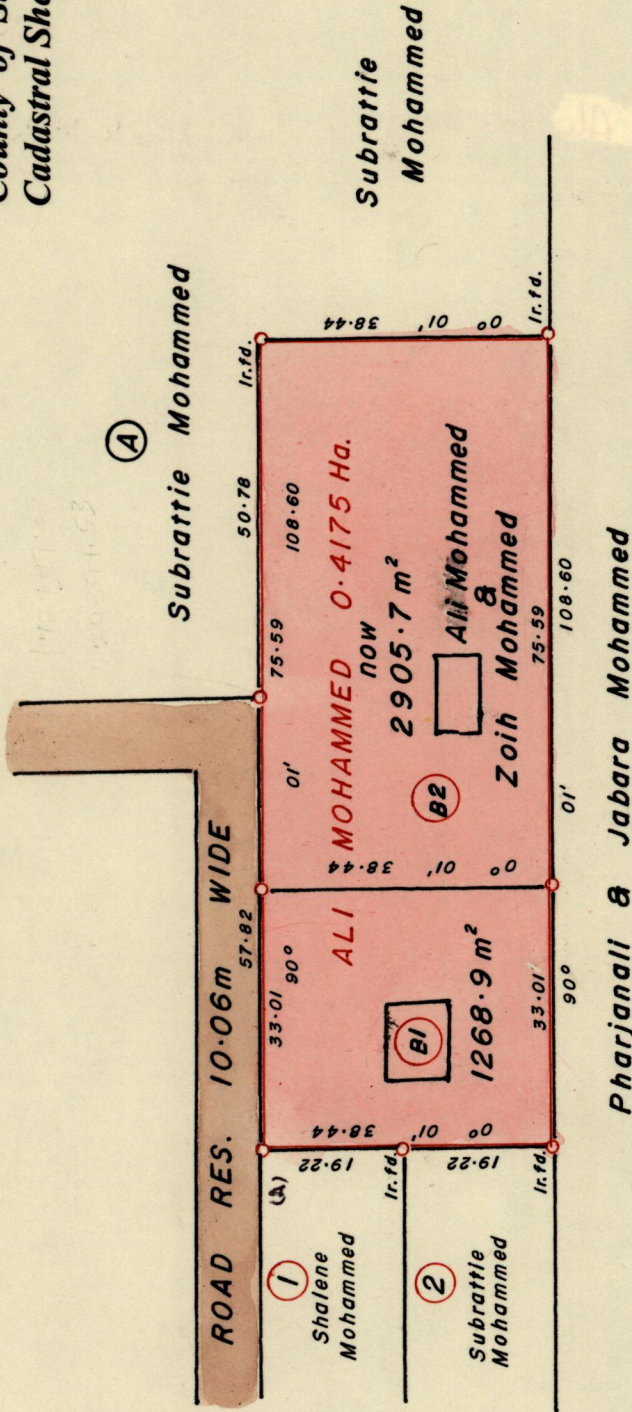


R.P.O. Vol. 145 Fol. 343
 C.T. Vol. 4041 Fol. 461

Vol. 4631 Fol. 207

Process ID#66374

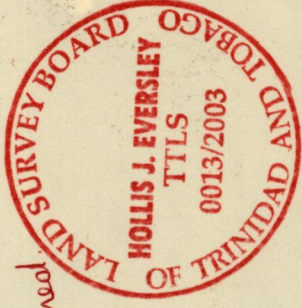
Ward of Siparia.
 County of St. Patrick.
 Cadastral Sheet G.18.D. 73C
 2/c



13008

217

(A) - 672958
 1120567
 4245 54



Shiffeak + Narusa Mohammed

Bearings are Cassini Grid based on Solar Observations.

PLAN of 2 Parcels of land coloured PINK in the Ward of Siparia.
 Containing together zero point four one seven five hectare.
 Surveyed by me, with due authority, in May 2003.

In accordance with Reg. 25(1) of the Land Surveyors' Regulations 1998,
 I certify that this plan is correct.

Approved
 Director of Surveys.
 2004/10/5

Checked by
 Entered O.M.S. 18.09.2003.
 Daghun

Trinidad and Tobago Land Surveyor 2003.

Bk. 1247: 69

SCALE 1:1000.

o Denotes Iron Put except otherwise stated
 Distances are in METRES.

Orgna Bb 1247.69.

B1

B2 Vol. 4631 fol. 219 Naresa Mohammed & Shiffeak Mohammed

17 OCT 2003
Lands and
Surveys
Division