

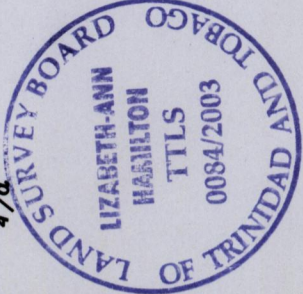
R.P.O. Vol. 6 Fol. 273

C.T. Vol. 4368 Fol. 413

Vol. 4538 Fol. 127

Process ID 166372

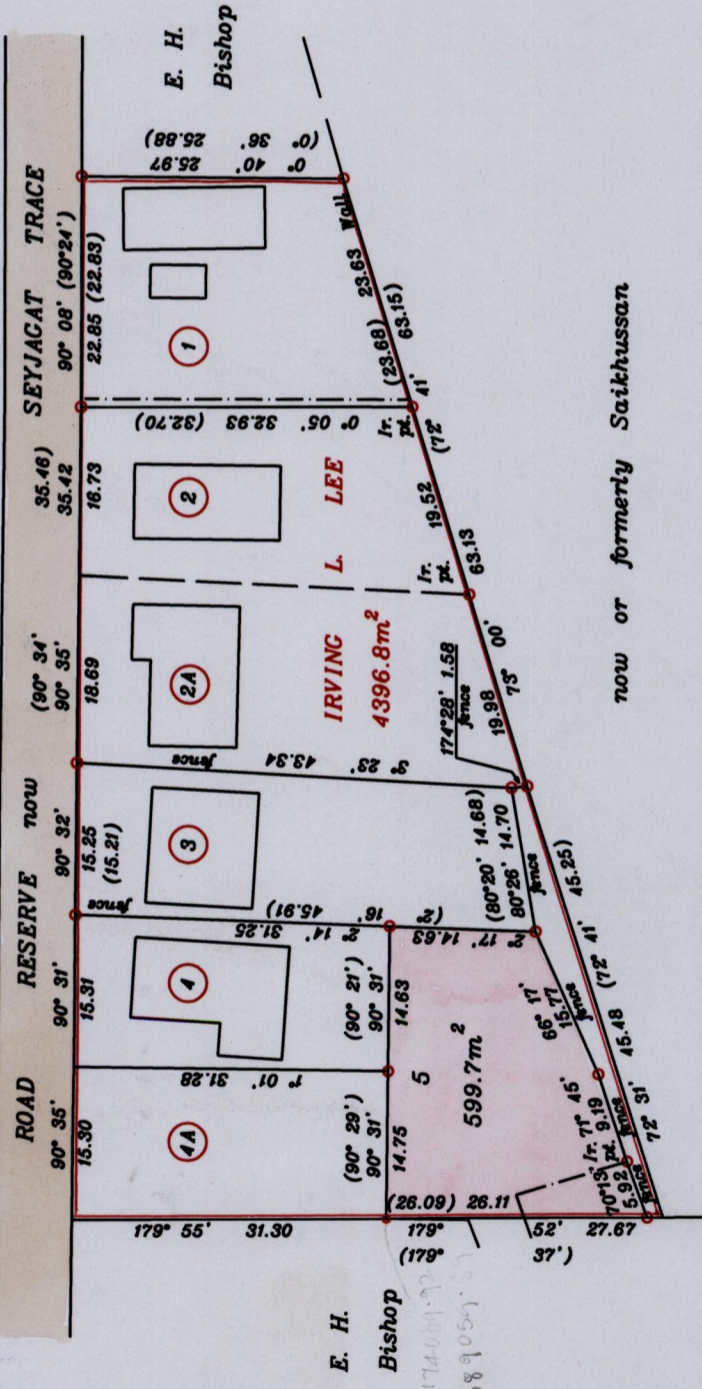
Borough of Arima  
County of St. George  
Cadastral Sheet B.25.E. 24C  
4/a



Vide Bk.1148 fol.126

Orig Bk 980:58

Lot 5 to be amalgamated to Lot 4



now or formerly Saikhussan

Lot	C.T. Vol.	Fol.	Owner
2	4406	501	T. Thomas & D. Charterrie
3	4404	455	Charmaine, Yloande & Carol Leela
4	4404	7	Ramdeen Leela

BK. 1308 Fol. 27

JL 125

fence

Ramdeen Leela

SCALE 1 : 750

o denotes Ir. fld. unless otherwise stated

Bearings are Cassini Grid based on Solar Observations

Distances are in metres

Approved  
Director of Surveys  
10/5.12.27

PLAN of a Parcel of land coloured pink in the Borough of Arima  
Containing five hundred and ninety nine point seven square metres

Surveyed by me, with due authority, in February 2003

In accordance with Regulation 25(1) of the Land Surveyors' Regulations 1998, I certify that this plan is correct.

Checked by M.L. 10-12-03

Elizabeth-Anne Hamilton

Trinidad & Tobago Land Surveyor

July 02

Entered on ...

1308

216

C N  
Cassini