

Process SD#66355

R.P.O. Vol. 97 Fol. 161

C.T. Vol 2510 Fol. 413

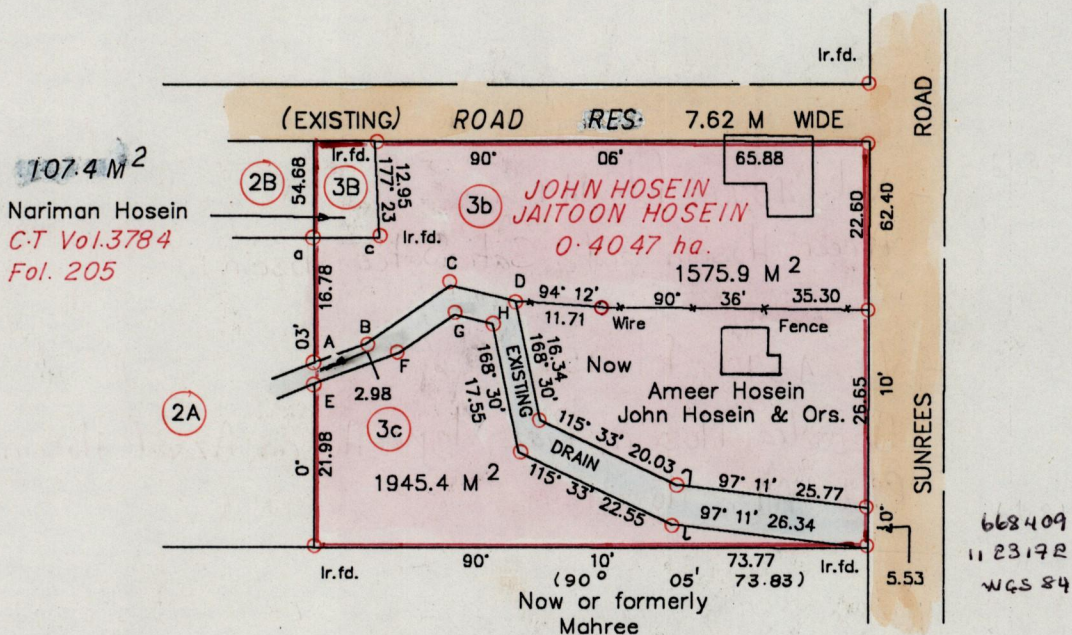
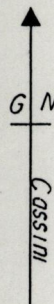
Bk. 1227 Fol. 158

Ward of Siparia

County of St. Patrick

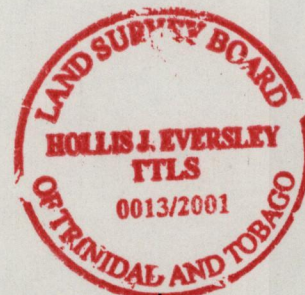
Cadastral Sheet G 13 M 63 E 4/d

Vol. 4570 fol. 143



○ Denotes iron put except otherwise stated  
Bearings are Cassini Grid based on solar obs.

Approved *[Signature]*  
Director of Surveys 2003-2-24



SCALE 1: 1000  
Distances are in metres

Note: To obtain compass bearings add/subtract minutes

PLAN of 2 Parcels of land coloured pink in the Ward of Siparia  
Containing Three thousand five hundred and twenty one point three square metres  
Surveyed by me, with due authority, in April 2001

In accordance with Reg (25) (1) of the Land Surveyors Regulations 1998 I certify that this plan is correct.

Checked by *[Signature]*

Entered on CMIS 12.09.2013 *[Signature]* Trinidad and Tobago Land Surveyor ..... 2001



Original Bk 1110 fol. 57

3b

- Vol. 4570 fol. 149

Ameer Hosein and Satiawatec Hosein

3c

- Vol. 4570 fol. 151

Jasodra Hosein, Riaz Wayne Hosein, Azaad Hosein and  
Riad Allan Hosein

10 JUL 2001  
Lands and  
Surveys  
Division