

Process ID#66350

R.P.O. Vol. 193 Fol. 529

C.T. Vol. 1630 Fol. 35

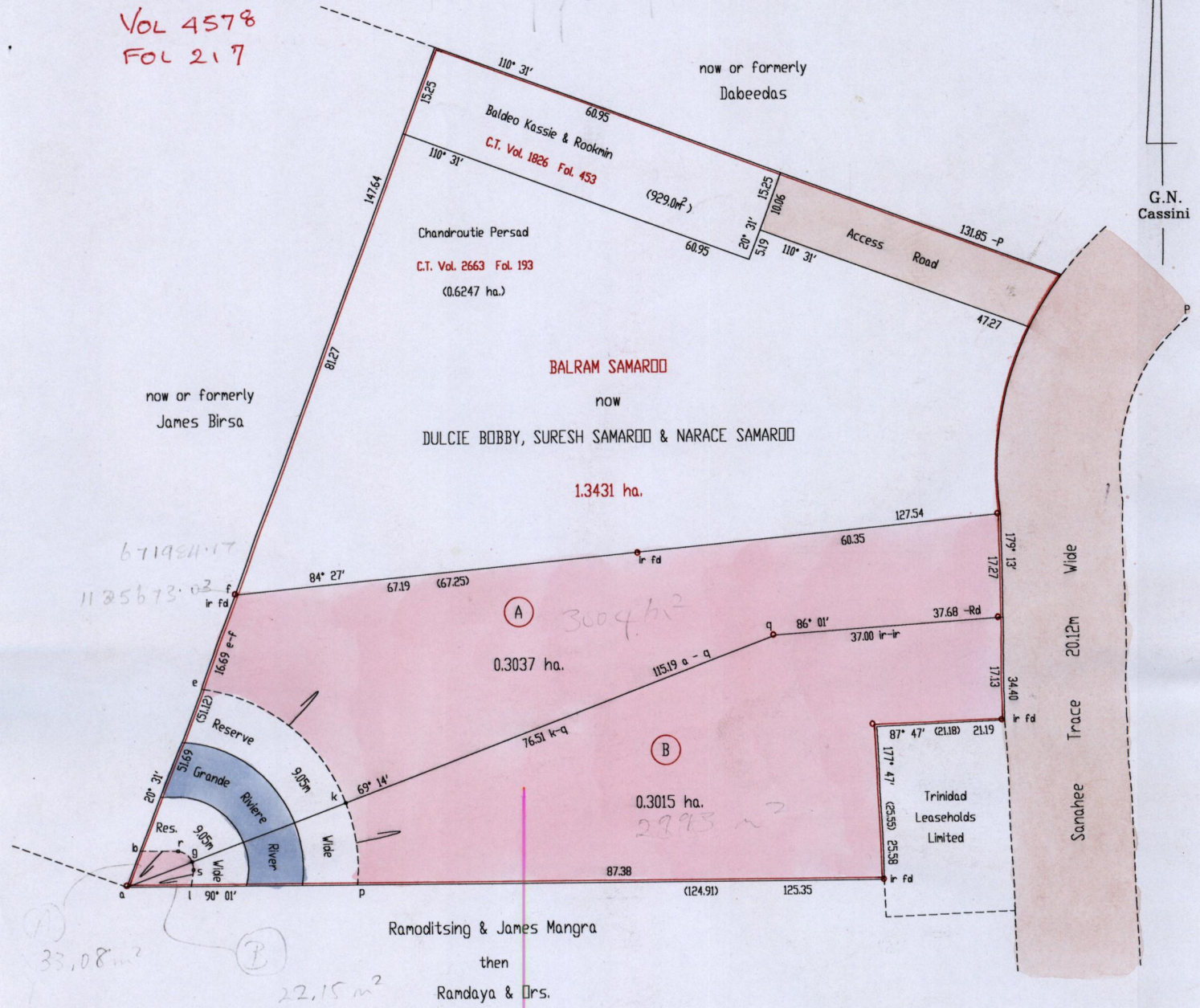
U.P.R.N. No.:

Ward of Naparima

County of Victoria

Cadastral Sheet G.13.G. 63F
2/c

VOL 4578
FOL 217



	Bearing	Distance
a - b	20° 31'	6.35
b - e	20° 31'	28.65
a - l	90° 01'	10.57
l - p	90° 01'	27.40
b - r	90° 33'	6.28
s - l	188° 03'	2.79
k - e	308° 33'	30.57
p - k	352° 32'	13.85
g - r	308° 13'	2.90
s - g	352° 28'	1.34

	Bearing	Distance
a - g	69° 14'	11.54

References: Bk.1124 Fol.178
Bk.1148 Fol.99

Approved *[Signature]*
Director of Surveys
2003.12.01

SCALE 1: 1000

Distances are in metres

o Denotes iron put except otherwise stated

Bearings are Cassini Grid based on Solar Observations

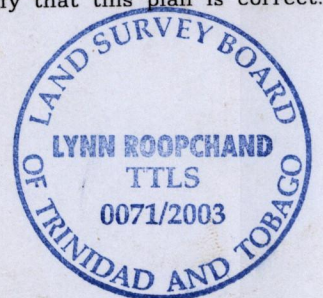
PLAN of 2 parcels of land coloured pink in the Ward of Naparima
Containing together zero point six zero five two hectares

Surveyed by me, with due authority, in October 2000 & April 2002

In accordance with Regulation 25(1) of the Land Surveyors' Regulations 1998, I certify that this plan is correct.

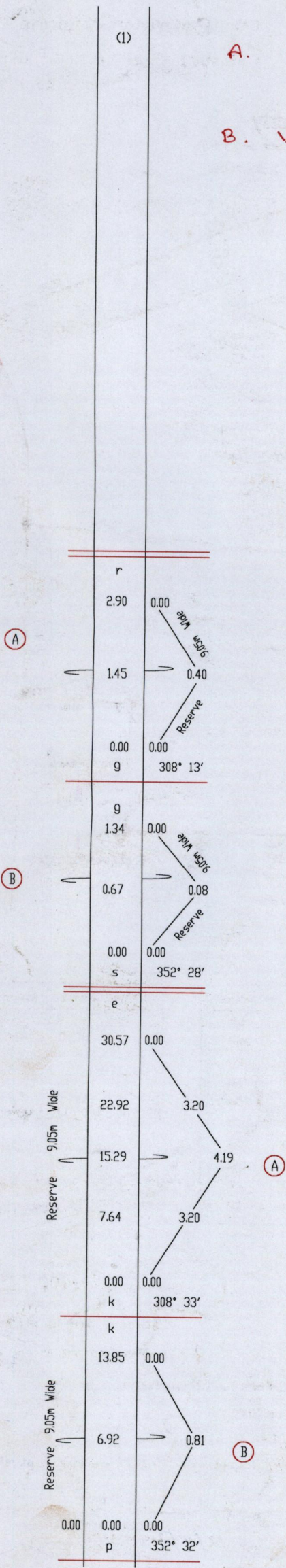
Checked by *[Signature]* 17/11/03
Entered *[Signature]*

[Signature]
Trinidad & Tobago Land Surveyor 12/11/2003



A. VOL 4578 FOL 228 SURESH SAMAROO

B. VOL 4578 FOL 231 NARACE SAMAROO



18 NOV 2003
Lands and
Surveys
Division

1279/241