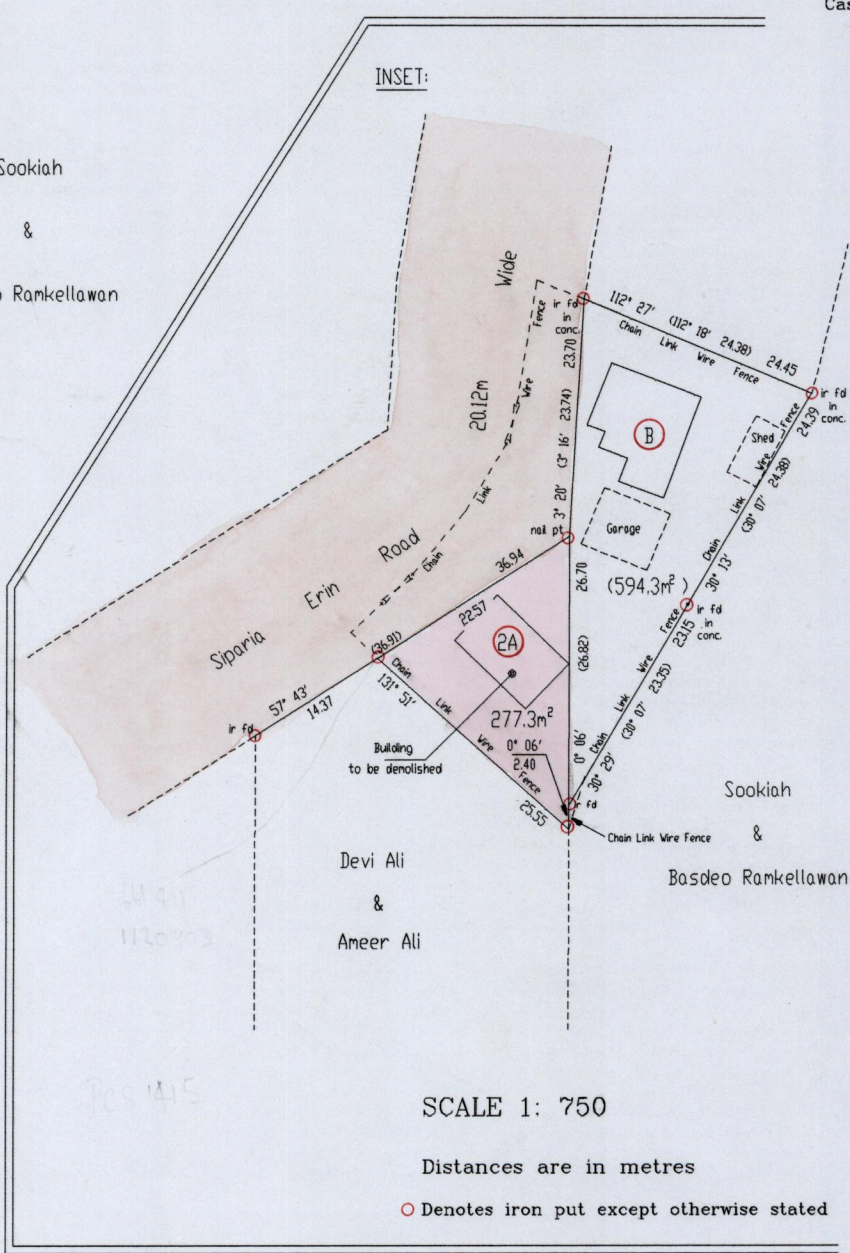


Note:  
Parcel (B) & Parcel (2A) are to be amalgamated



SCALE 1: 750

Distances are in metres

○ Denotes iron put except otherwise stated

Approved *[Signature]*  
Director of Surveys 2003-5-27

Reference: Bk.1103 Fol.185  
*Original* Bk.1103 Fol.186

SCALE 1: 2000 *Ann Marilyn Raymond*

Distances are in metres

○ Denotes iron put except otherwise stated

Bearings are Cassini Grid based on Solar Observations

PLAN of a parcel of land coloured pink in the Ward of Siparia  
Containing two hundred and seventy seven point three square metres  
Surveyed by me, with due authority, in October 2002

In accordance with Regulation 25(1) of the Land Surveyors' Regulations 1998, I certify that this plan is correct.

Checked by *M. 7. 20. 503*  
Entered *[Signature]*

*[Signature]*  
Trinidad & Tobago Land Surveyor 15/10/2002

