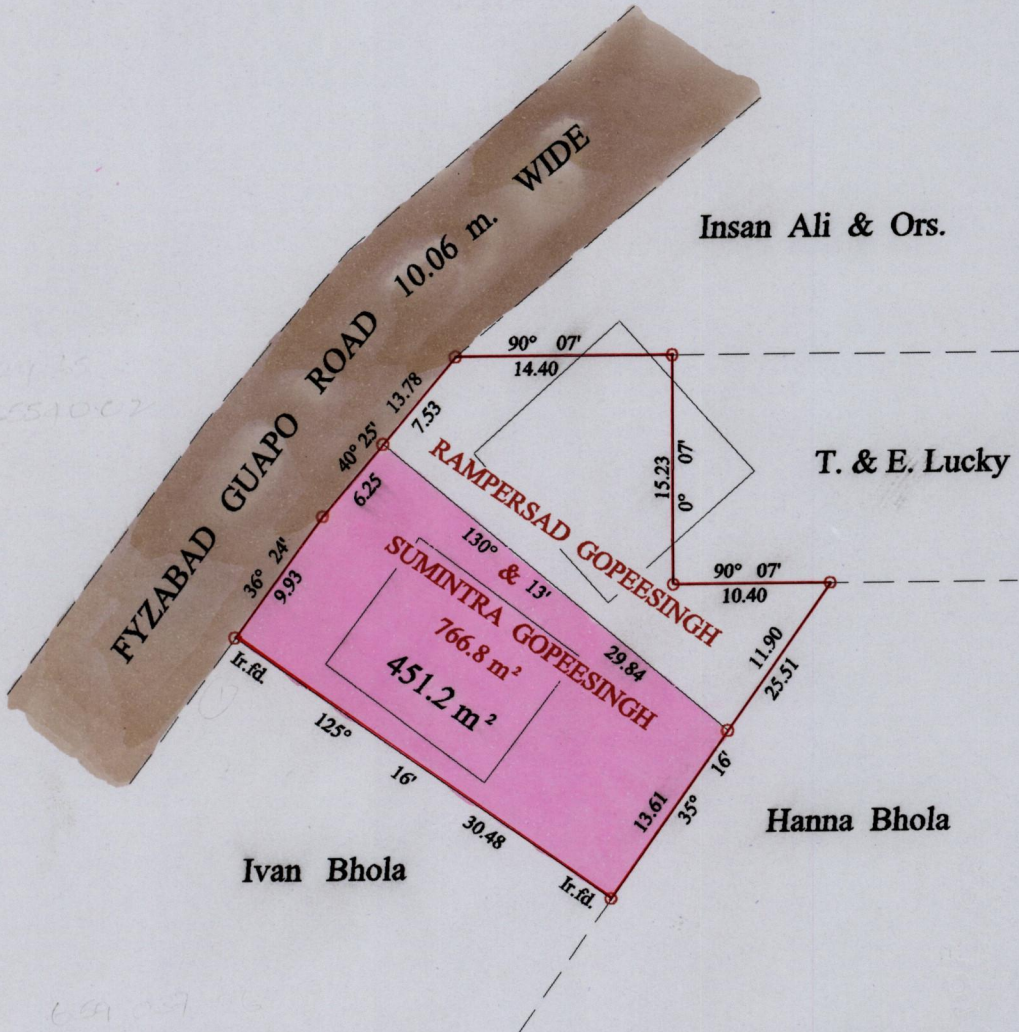


Vol. 4582 Fol. 273

Process ID#66623



659037.26  
1125729.82  
WGS 84

Vide Bk.968 fol.39 Original

Approved *[Signature]*  
Director of Surveys  
1574-5-24

*Rampersad, Sumintra, Krishendath Gopeesingh  
by Lynette Drupathy Tilluckdharry*

o Denotes Iron put except stated otherwise. SCALE : 1 : 500  
Note: Bearings are cassini grid based on solar observations Distances are in metres

PLAN of a Parcel of land coloured pink in the Ward of Siparia  
Containing four hundred and fifty one point two square metres  
Surveyed by me, with due authority, in August 2001  
In accordance with Regulation 25 (1) of the Land Surveyors' Regulations 1998,  
I certify that this plan is correct.

Checked by *[Signature]*

Entered on CMS 19.09.2013 Trinidad & Tobago Land Surveyor *[Signature]* 10.12.2003

