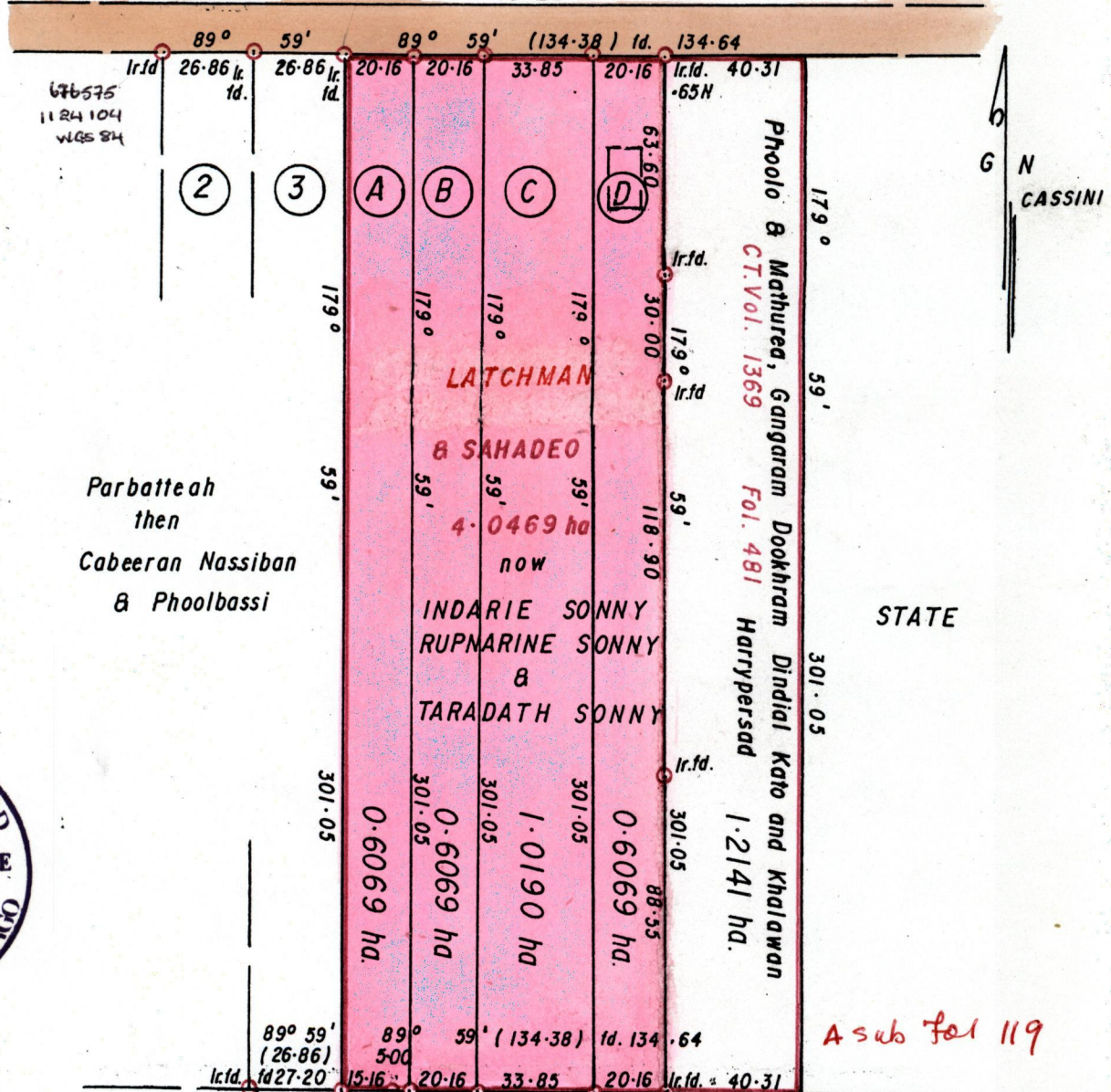


Vol. 4508 fol. 47

RAMSABAD TRACE 15.29 m WIDE



Approved

*Lawrence Clarke*  
 Director of Surveys 2000.10.9

State then Setajia

Bk 926 Fol. 189

○ Denotes Iron put except otherwise stated.

SCALE 1 : 2000

Note: To obtain compass bearings add/subtract 1 minutes Distances are in metres.

PLAN of 4 Parcel of land coloured pink in the Ward of Siparia Containing together two point eight three nine seven hectares.

Surveyed by me, with due authority, in August 1997.

In accordance with Rule 25 (1) of the Land Surveyors Regulations 1998, I certify that this plan is correct.

Checked by *OC 99/12/14* *Lawrence Clarke* TTLS

Entered *CMS 11.10.2013* Land Surveyor, Trinidad and Tobago *1<sup>st</sup> July* 1999

Original BK 926 fol. 189

- A - Vol. 4508 fol. 59  
Indarie Sonny, Rupnarine Sonny and Taradath Sonny in favour of  
Taradath Sonny and Parbatie Sonny -
- B - Vol. 4508 fol. 73  
Rupnarine Sonny and Fatima Sonny -
- C - Vol. 4508 fol. 87  
Indarie Sonny -
- D - Vol. 4697 fol. 97 DEORAGIE RAMBARAN & ORS.

