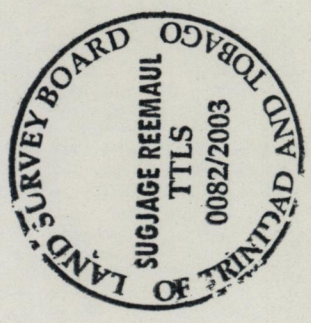
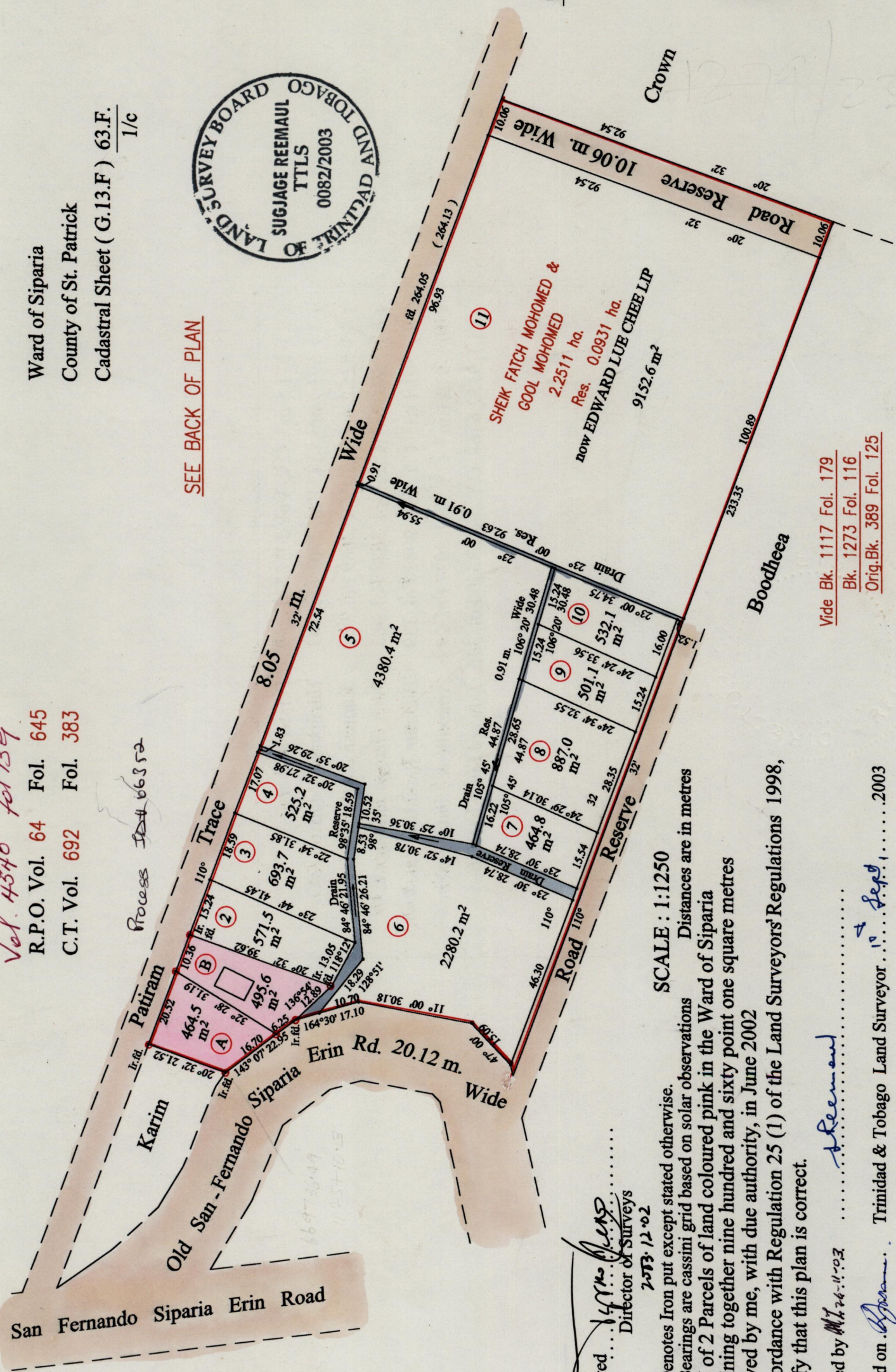
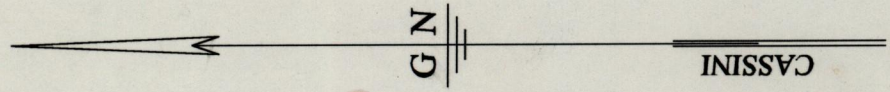


Ward of Siparia
County of St. Patrick
Cadastral Sheet (G.13.F) 63.F.
1/c



SEE BACK OF PLAN



Vol. 4540 Fol. 139
R.P.O. Vol. 64 Fol. 645
C.T. Vol. 692 Fol. 383

Vide Bk. 1117 Fol. 179
Bk. 1273 Fol. 116
Orig. Bk. 389 Fol. 125

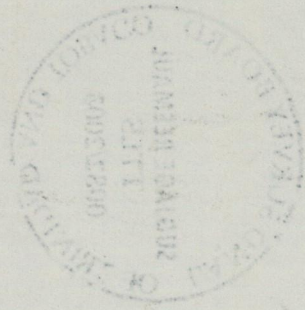
Approved: *[Signature]*
Director of Surveys
2073-12-02

SCALE : 1:1250
Distances are in metres
Note: Bearings are cassini grid based on solar observations
PLAN of 2 Parcels of land coloured pink in the Ward of Siparia
Containing together nine hundred and sixty point one square metres
Surveyed by me, with due authority, in June 2002
In accordance with Regulation 25 (1) of the Land Surveyors' Regulations 1998,
I certify that this plan is correct.

Checked by *[Signature]*
Entered on *[Signature]* Trinidad & Tobago Land Surveyor... 2003

A.

B'



- (2) 571.5 m² C.T. Vol. 3037 Fol. 299 Persad Maharaj ✓
- (3) 693.7 m² C.T. Vol. 2702 Fol. 143 Harripersad Maharaj & Or. ✓
- (4) 525.2 m² C.T. Vol. 2689 Fol. 93 Ramesh & Jasso Bissoon ✓
- (8) 887.0 m² C.T. Vol. 2688 Fol. 403 Peter George Jennings & Or. ✓
- (9) 501.1 m² C.T. Vol. 2981 Fol. 339 Bickram Ramkhalawan & Or. ✓
- (10) 532.1 m² C.T. Vol. 3037 Fol. 299 Ameralie & Linda Hosein ✓
- (11) 9152.6 m² C.T. Vol. 3450 Fol. 335 Edward Lue Chee Lip ✓

15 SEP 2003
Lands and
Surveys
Division

152/121