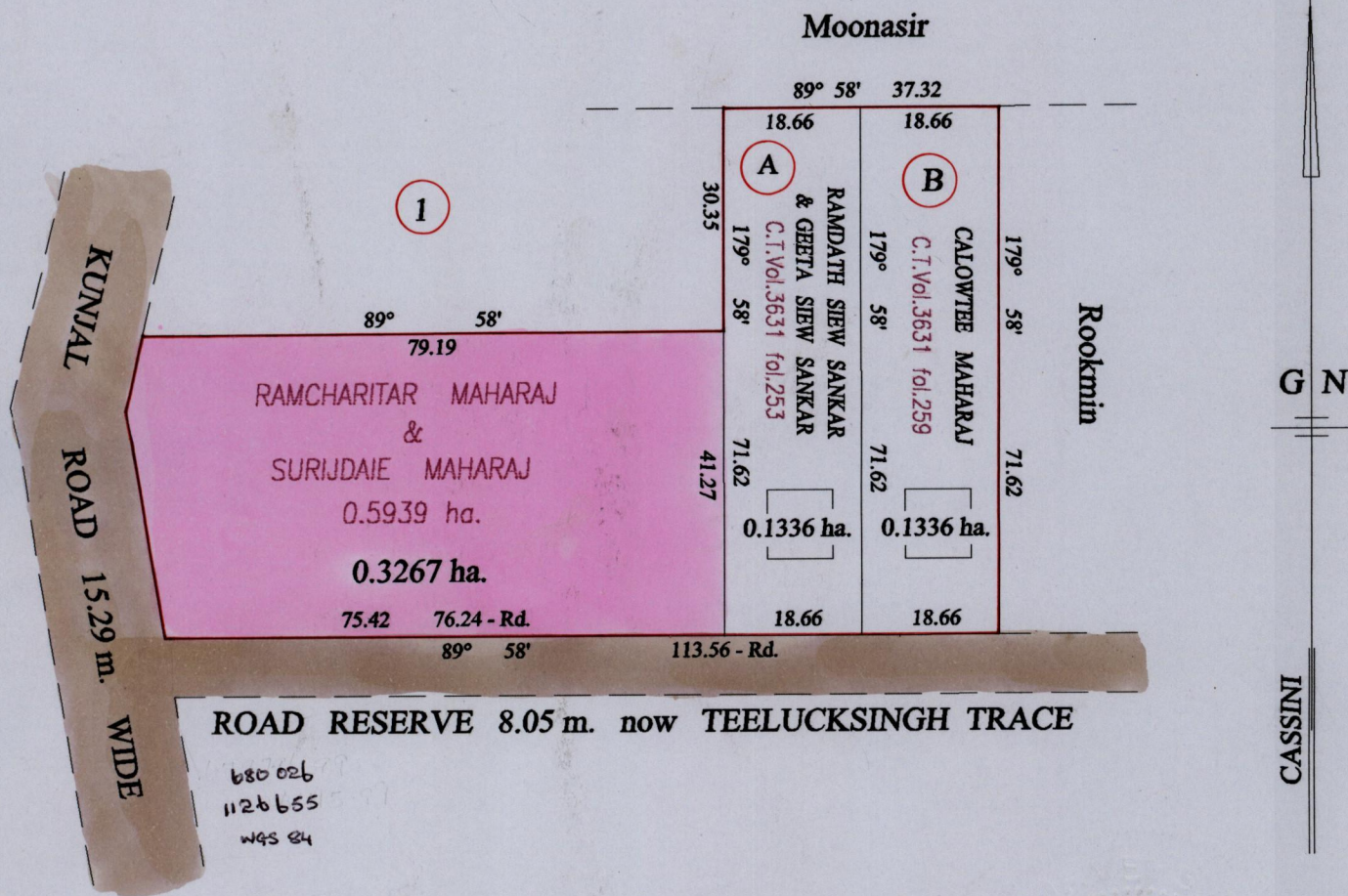


REMAINING PORTION

R.P.O. Vol. 431 Fol. 65  
C.T. Vol. 2970 Fol. 65  
Vol. 4526 Fol. 355

Ward of Savana Grande  
County of Victoria  
Cadastral Sheet ( G.14.D ) 64.D  
2/b

Process Id# 66348



Vide Bk.385 fol.253

Vide Bk.1238 fol.175

Vide Bk.963 fol.77

Orig Bk 935:191 Lilowtee Maharaj - Hosein

Approved *[Signature]*  
Director of Surveys  
1053.1127

SCALE : 1:1000

Note: Bearings are cassini grid based on solar observations Distances are in metres

This is a true copy of a diagram of zero point five nine three nine hectares, originally transferred to RAMCHARITAR MAHARAJ and SURIJDAIE MAHARAJ, shewing a portion coloured pink and containing zero point three two six seven hectares being the remainder after two (2) previous transfer of another portion of the land. In accordance with Regulation 25 (1) of the Land Surveyors' Regulations 1998, I certify that this plan is correct.

Checked by *[Signature]* 07/11/03.

Entered on 16.09.2013 Trinidad & Tobago Land Surveyor *[Signature]* 7:10:00

