

1308

147

Process ID# 66517

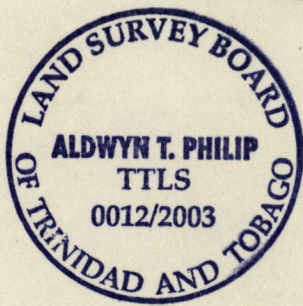
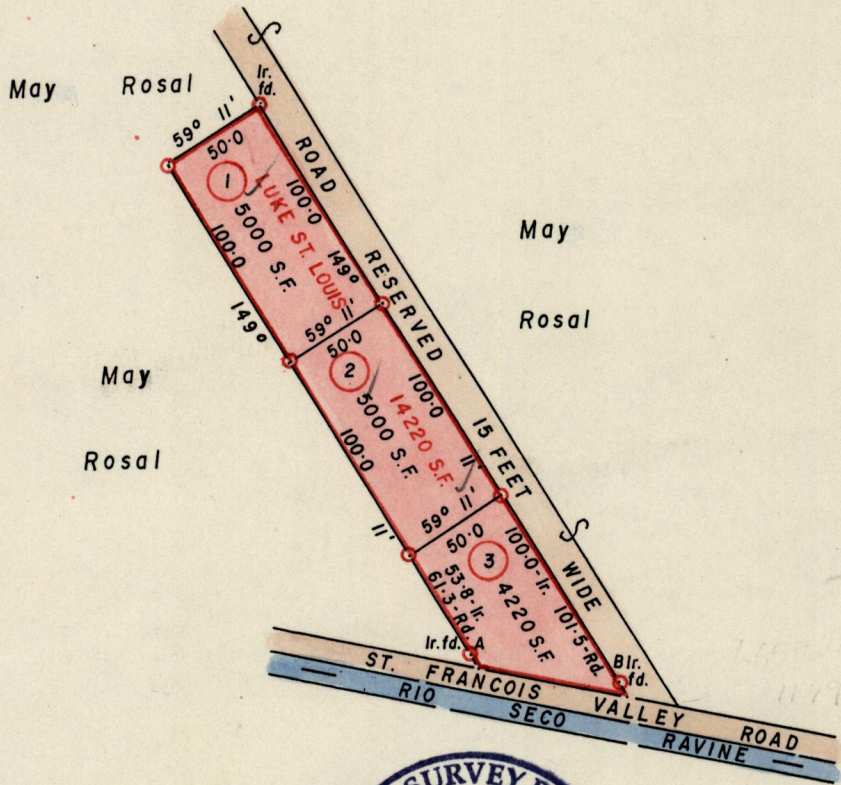
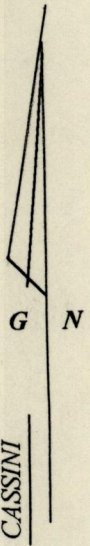
R.P.O. Vol. Fol.

C.T. Vol. III7 Fol. 451

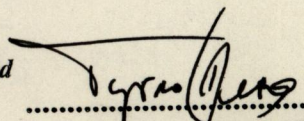
Ward of St. Anns  
County of St. George  
Cadastral Sheet A.20.H. 13E  
3/a

Vol. 4516 Fol. 359

SEE BK. 960 fol. 61 & 62



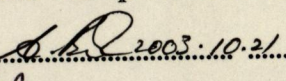
A - B 101° 55' 68.1

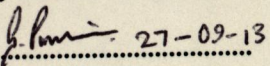
Approved   
Director of Surveys  
2003.10.21

○ Denotes Iron put unless otherwise stated

SCALE 1 / 1000  
Distances are in feet

Note: To Obtain compass bearings subtract 1 minutes  
PLAN of 3 Parcels of land coloured pink in the Ward of St. Anns  
Containing together fourteen thousand two hundred and twenty square feet (1321.1 m<sup>2</sup>)  
Prepared by me, with due authority from surveys done by Mr. F.C. Prevatt in  
November 1960.  
In accordance with Regulation 25 (1), of the Land Surveyors Regulations 1998,  
I certify that this plan is correct.

Checked by  2003.10.21

Entered  27-09-13 . Trinidad and Tobago Land Surveyor..... 20/10/2003

see Akabo: 60 61, 62

1. Vol 4516 Fol 369

2.

3. Vol 4519 Fol 381

20 OCT 2003  
Lands and  
Surveys  
Division