

1308

137

R.P.O. Vol. 115 Fol. 439

C.T. Vol. 1459 Fol. 429

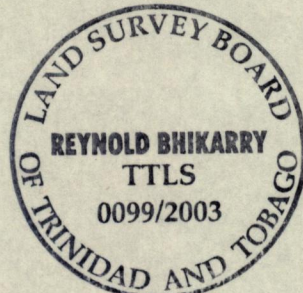
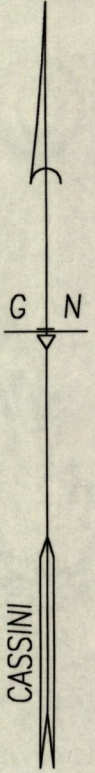
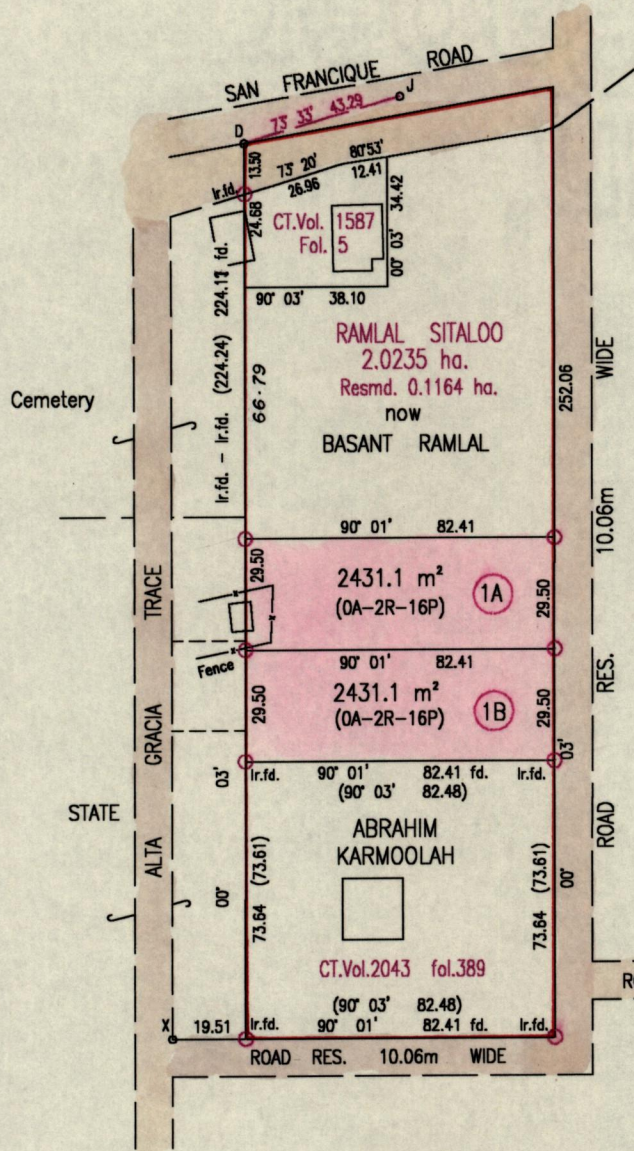
Vol. 4515 Fol. 427

Process # 66481

Ward of Siparia

County of St. Patrick

Cadastral Sheet (G.12.H & L) 63.E. 167  
2/c,4/a



--- Foot path

Vide Bk.1002 fol.14  
Vide Bk.469 fol.59  
Vide Bk.960 fol.33

Approved *[Signature]*  
Director of Surveys  
2003.8.25

○ Denotes Iron put except stated otherwise. SCALE : 1:2000  
Note: Bearings are cassini grid based on solar observations Distances are in metres

PLAN of 2 Parcels of land coloured pink in the Ward of Siparia  
Containing together four thousand eight hundred and sixty two point two square metres  
Surveyed by me, with due authority, on the 10th. February 2001.  
In accordance with Regulation 25 (1) of the Land Surveyors' Regulations 1998,  
I certify that this plan is correct.

Checked by *[Signature]* H:8.03. . . . . *Reynold Bhikarry*  
Entered on *[Signature]* . . . . . Trinidad & Tobago Land Surveyor . 29th May . 2003

orig. Bk 469: 59

LOT 1A/ Vol. 4696

Pol. 97

MOTILAL RAMLAL -

LOT 1B/ Vol. 4515

7d. 433 Basant Ramlal, Krishna Ramlogan

Sawh, & Liloutie Sawh

-6 AUG 2003  
Lands and  
Surveys  
Division