

Process ID 66444

1308

127

Vol. 4562
R.P.O Vol. 222

Fol 101
Fol 217

C.T Vol. 1072

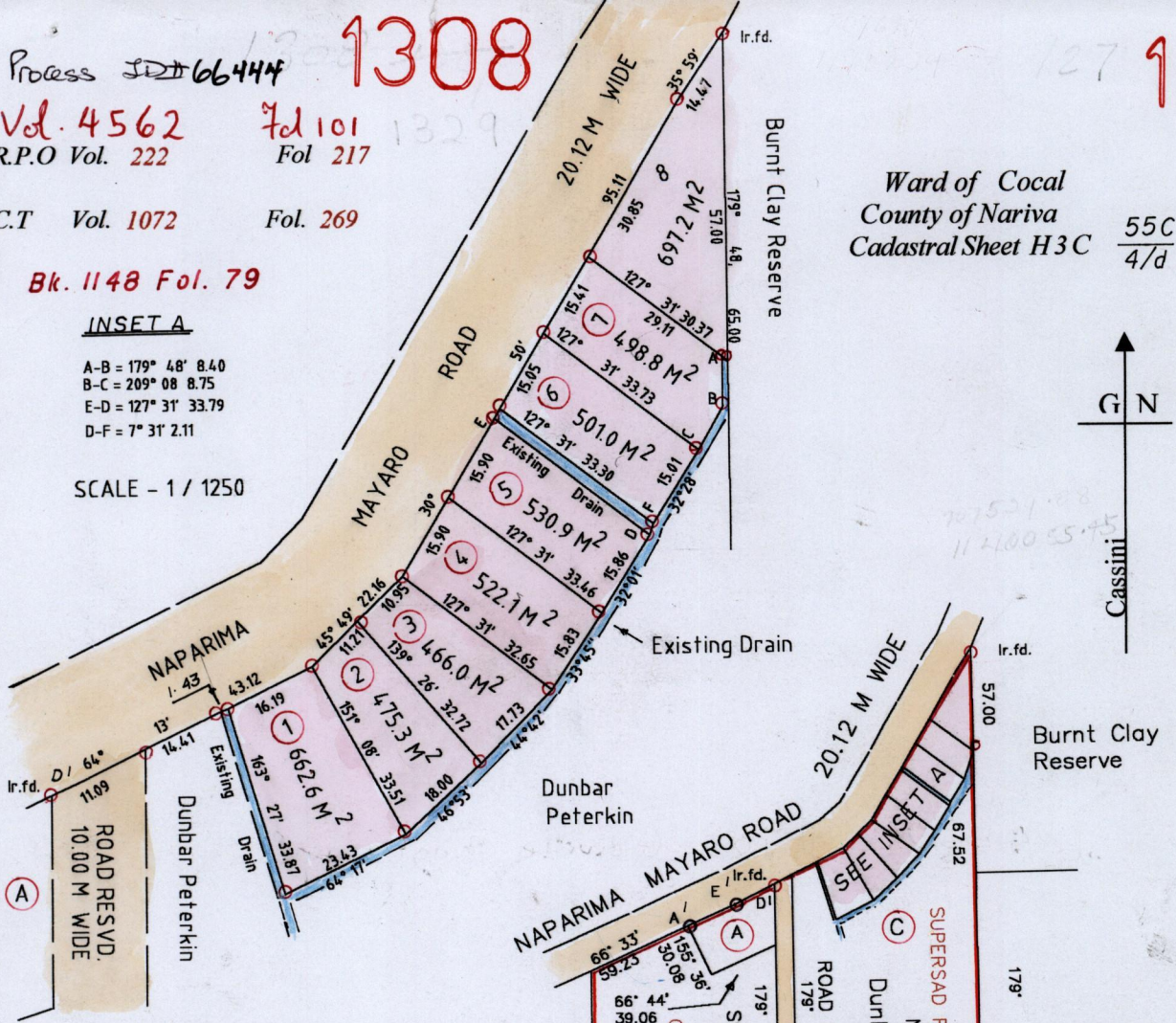
Fol. 269

Bk. 1148 Fol. 79

INSET A

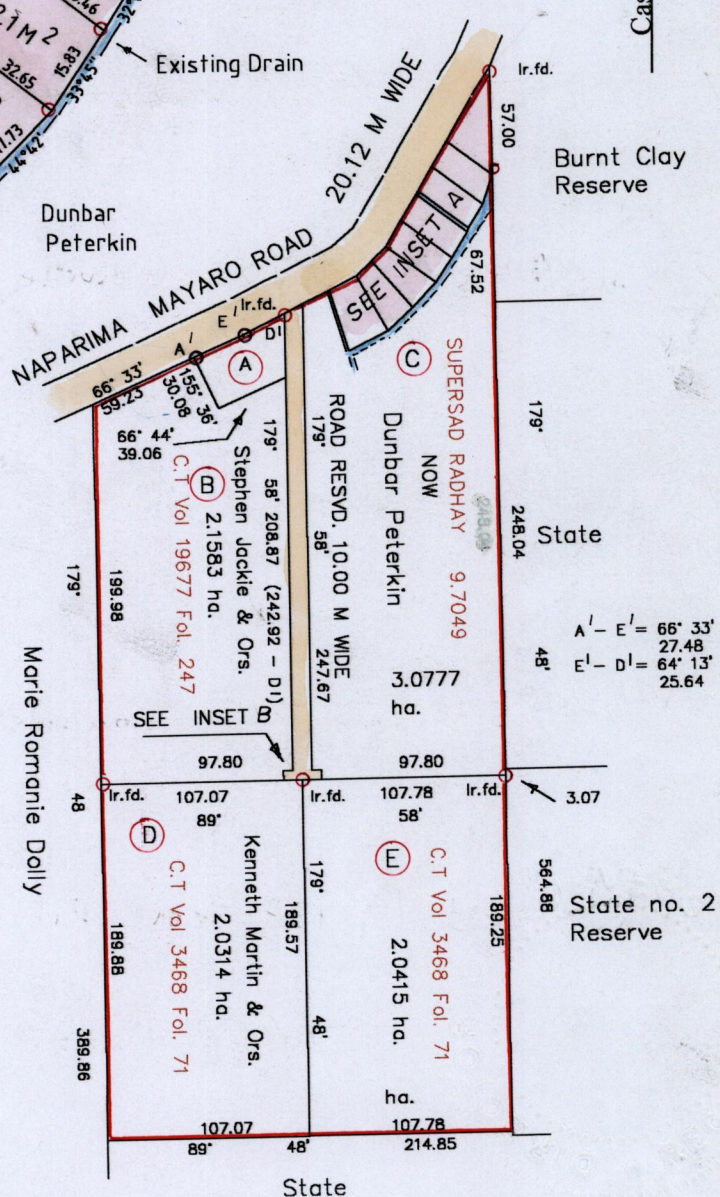
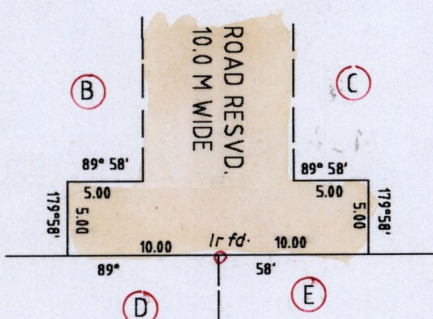
A-B = 179° 48' 8.40
B-C = 209° 08' 8.75
E-D = 127° 31' 33.79
D-F = 7° 31' 2.11

SCALE - 1 / 1250



INSET B

SCALE - 1 / 500



○ Denotes iron put except otherwise stated
Bearings are Cassini Grid based on solar obs.
Approved

Director of Surveys

2002.3.29

Note: To obtain compass bearings add/subtract minutes

BK. 1376 Fol. 136

SCALE 1: 4000

Distances are in metres



PLAN of 8 Parcel s of land coloured pink in the Ward of Cocal
Containing Four thousand three hundred and fifty three point nine square metres
Surveyed by me, with due authority, in January 2002

In accordance with regulation (25) (1) of the Land Surveyors' Regulations 1998, I certify
that this plan is correct.

Checked by *[Signature]* 17 Nov 03

Entered *[Signature]* Trinidad and Tobago Land Surveyor *[Signature]* 2002

LOT 1/

LOT 2/

LOT 3/

LOT 4/ Vol. 4577 Fol. 455 NOLASCO THOMAS. ✓

LOT 5/ Vol. 4562 Fol. 105 Gowrie Ragbir and Sumindra Ragbir

LOT 6/

LOT 7/ Vol. 4563 Fol. 345 Romanus Vinn Maharaj ✓

LOT 8/ Vol. 4563 Fol. 133 Neil Fabien ✓

31 JUL 2002
Lands and
Surveys
Division

1289/92