

Process ID# 66401

R.P.O. Vol. 20 Fol. 395

C.T. Vol. 3844 Fol. 39

Ward of Erin

County of St.Patrick.

Cadastral Sheet F.25.G. 72E  
4/a

137 ac. resumed for Road Purposes

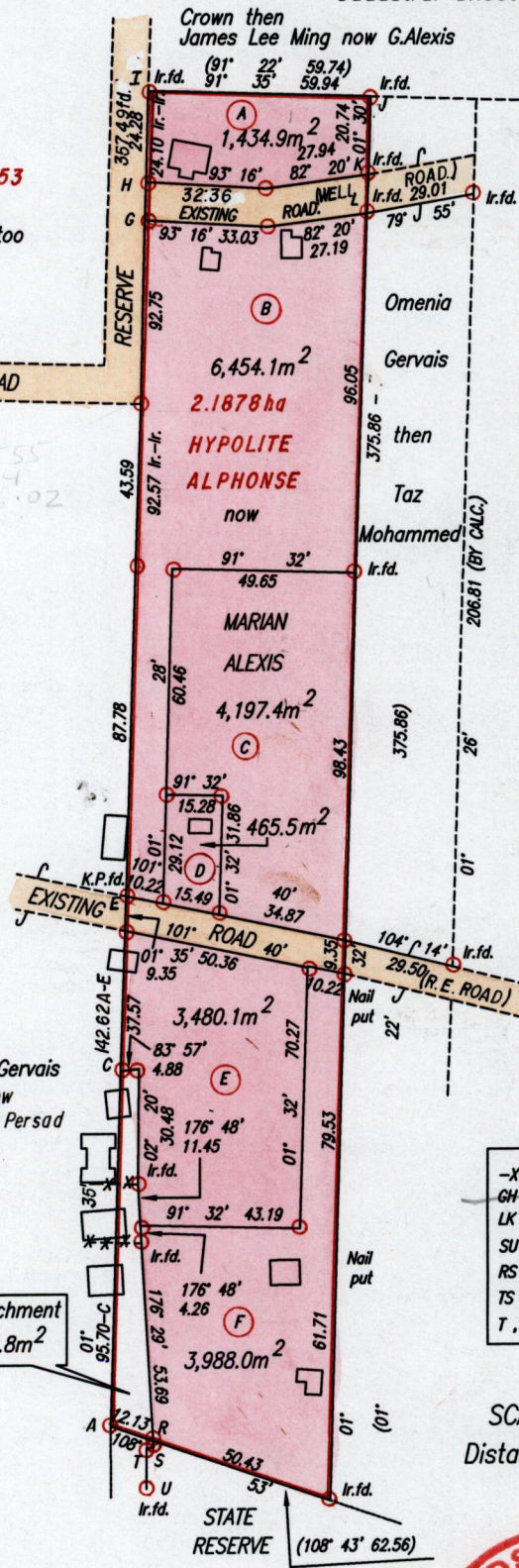
Vol 4565 fol 353

Bk. 1179 fol. 53

P.Chattoo

Cassini  
G I N

A-I = (01° 32' 357.27)  
E-I = 01° 28' 214.87



NOTE : Encroachment Lines Along Fences.

-X-X-X-X FENCE  
 GH = 01° 28' 10.06 lr.-lr. 10.42  
 LK = 01° 52' 10.20  
 SU = 179° 36' 10.89  
 RS = 176° 29' 1.81  
 TS = 85° 56' 1.96  
 T, S = lr.fd.

Encroachment  
by 724.8m<sup>2</sup>

Approved

*[Signature]*  
 Director of Surveys  
 2004-2-4

SCALE 1:2000  
Distances are in Metres

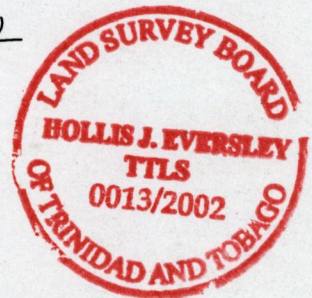
○ Denotes Iron put except otherwise stated.  
Bearings are based on Solar Observations

PLAN of 6 Parcels of land coloured pink in the Ward of Erin  
Containing together two point zero zero two zero hectares.  
Surveyed by me, with due authority, in May,2001  
In accordance with regulation 25(1) of the Land Surveyors' Regulations 1998,  
I certify that this plan is correct.

Checked by *[Signature]*

Entered on *[Signature]*

Trinidad & Tobago Land Surveyor *[Signature]* 18<sup>th</sup> June 2002



A

B

C Vol 4565 Fol 359 Harry Edwards Beckles.)

D Vol. 5149 Fol. 287 Asharam Sharma & Ors.

E

F

25 JUN 2002  
Lands and  
Surveys  
Division

1289/3