

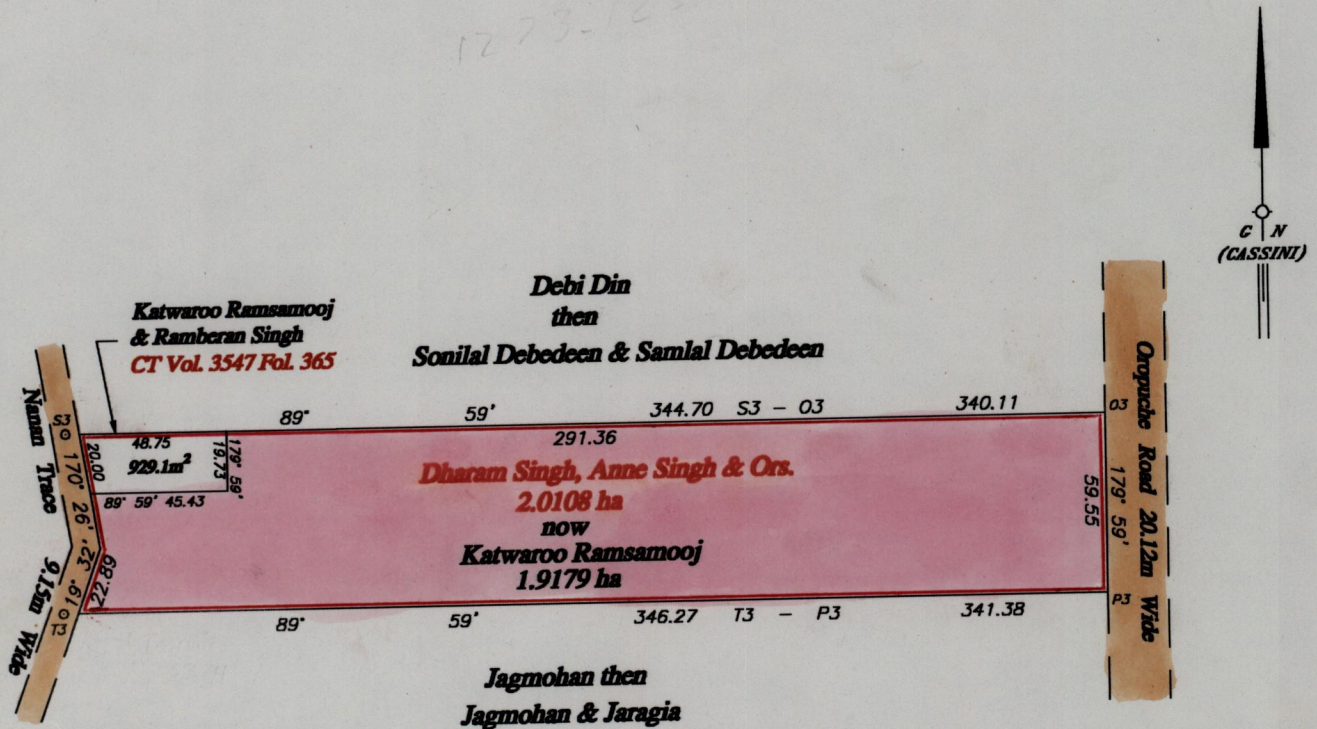
1308
REMAINING PORTION

121

RPO Vol. 693 Fol. 235
CT. Vol. 1291 Fol. 357
Vol. 4534 Fol. 13

Ward of Moruga
County of Victoria
Cadastral Sheet (G.14.G), $\frac{64D}{2/c\&2/d}$

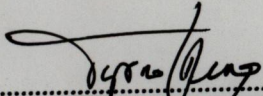
Process 204 66330



Orig Bk 637:364

Ref Bk. 1200 : 212
Survey Order 422/29

Katwaroo Ramsamooj & Soogee Katwaroo

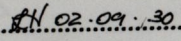
Approved 
Director of Surveys
2002.10.03

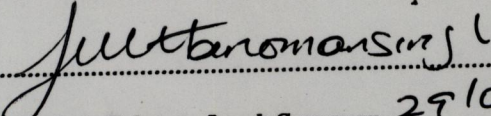
SCALE 1 : 2500

Note : To obtain compass bearing add 1 minute.

Distances are in metres

This is a true copy of a diagram of two point zero one zero eight hectares originally transferred to Dharam Singh, ^{& Ors} showing a portion coloured pink and containing one point nine one seven nine hectares being the remainder after one (1) ^{regulation} previous transfer of a portion of the land. In accordance with ~~Rule~~ ^{Regulation} 25 (1) of the Land Surveyors' Regulations 1998, I certify that this plan is correct.

Checked by  21.02.09.30


Trinidad & Tobago, Land Surveyor 29/08/2001

Entered on 