

3304

Process *SD# 66253*

R.P.O. Vol. 520 Fol. 267

C. of T. Vol. 1573 Vol. 487

*Vol. 4288 Fol. 233*

1308

REMAINING PORTION

L. & S.--56

104

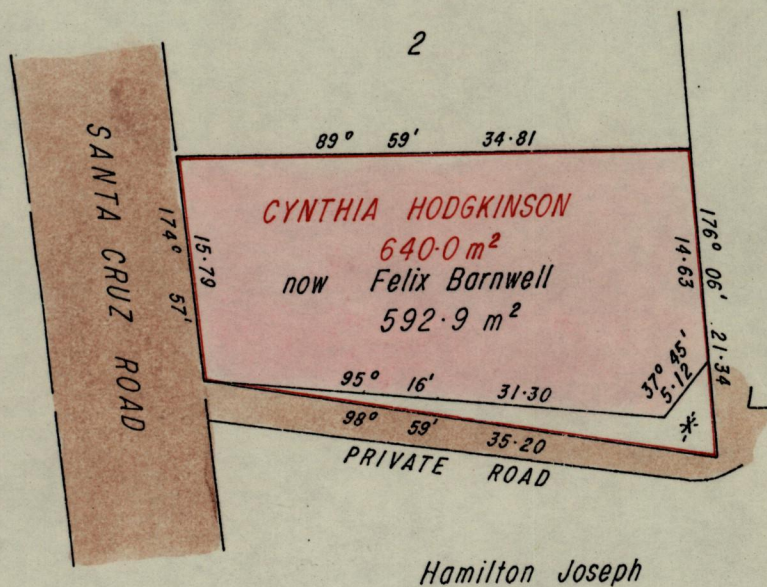
Cadastral Sheet B.17.J

$\frac{13F}{3/c}$

Ward of St. Anns

County of St. George

Vide L&S Bk. 476 fol. 108



E. 669854  
N. 1178732

\* Hamilton Joseph  
47.1 m<sup>2</sup>

C.T. Vol. 1676 fol. 399

Approved

*[Signature]*  
Director of Surveys  
*47/7/58*

DMDC. INVESTMENTS LTD.

SCALE 1 : 500

Distances are in metres.

Note: To obtain compass bearings  $\frac{\text{add}}{\text{subtract}}$  / minutes

This is a true copy of a diagram of *six hundred and forty square metres* originally transferred *to* **CYNTHIA HODGKINSON**, shewing a portion granted to *coloured pink and containing* *five hundred and ninety-two point nine square metres* being the remainder after *one (1)* previous transfer of another portion of the land. *the dividing lines having been run in conformity with Rule 76 under Sec. 7(d) of Cap. 27. No. 2 and duly certified* 14(2)(d) of the Land Surveyors' Ordinance 1952 by the Director of Surveys.

Checked by *AMZ 97.7.18*

Entered on cms. *[Signature]*

*[Signature]*  
Land Surveyor, Trinidad, *22<sup>nd</sup> January 1997.*