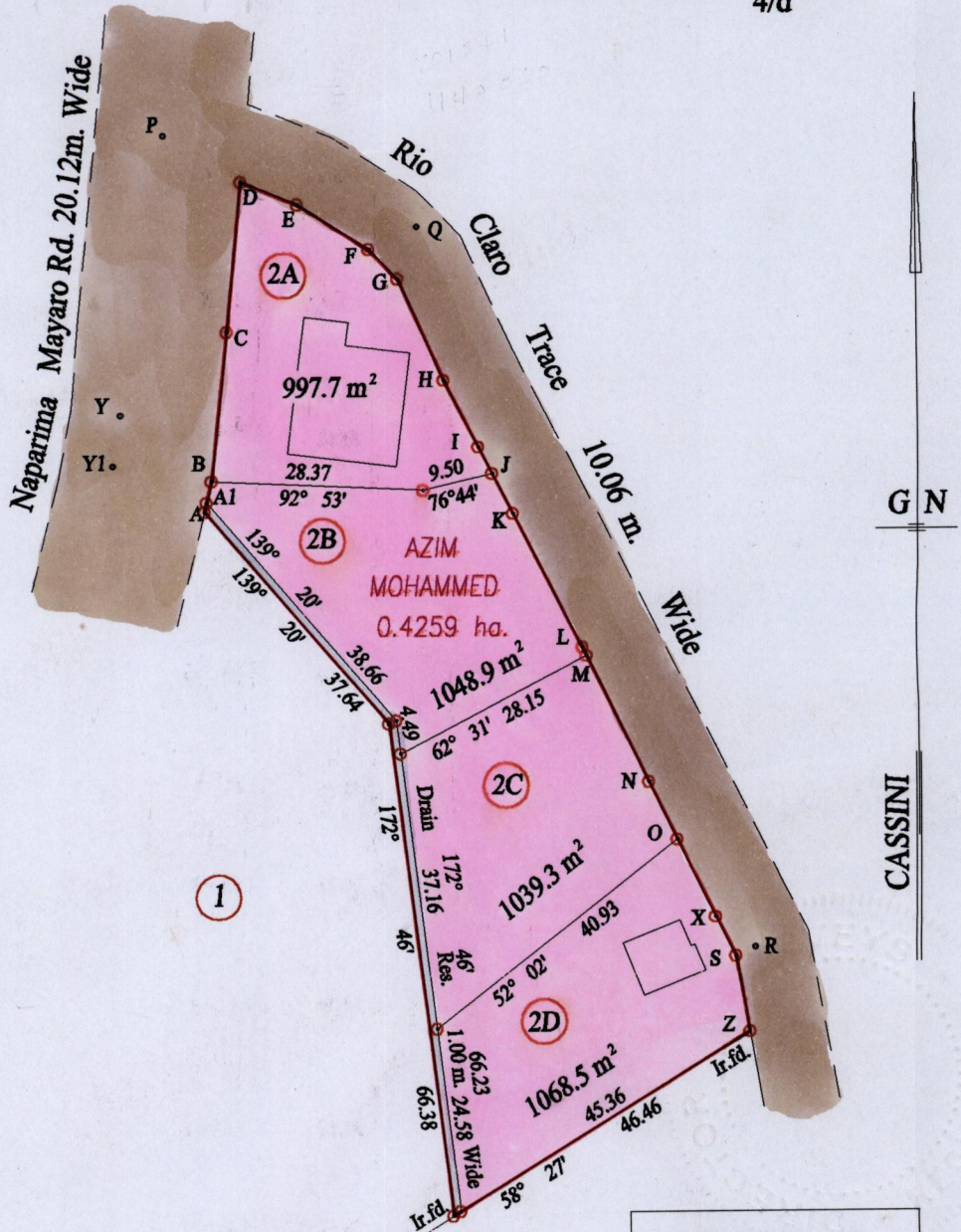


Vol. 4577 fol. 401

Process ~~524~~ 66246



A - A1	13° 41'	1.23
A1 - B	13° 41'	2.98
B - C	6° 13'	20.15
C - D	5° 40'	20.16
D - E	112° 27'	8.18
E - F	122° 37'	11.32
F - G	136° 06'	5.54
G - H	155° 53'	14.87
H - I	152° 58'	10.07
I - J	152° 58'	4.02
J - K	152° 58'	6.04
K - L	152° 57'	20.14
L - M	154° 07'	1.25
M - N	154° 07'	18.88
N - O	154° 07'	8.54
O - X	154° 07'	11.57
X - S	153° 19'	5.90
S - Z	170° 04'	10.30

D- E. 701841
 N. 1140050
Vide Bk. 1273 fol. 188
Vide Bk. 1219 fol. 220
Vide Plan F.J.37
SEE BACK OF PLAN

Original Sur.

Approved *[Signature]*
 Director of Surveys
 9004-5-24

○ Denotes Iron put except stated otherwise.

SCALE : 1:1000

Note: Bearings are cassini grid based on solar observations

Distances are in metres

PLAN of 4 Parcels of land coloured pink in the Ward of Cocal
 Containing together four thousand one hundred and fifty four point four square metres
 Surveyed by me, with due authority, in October 2002

In accordance with Regulation 25 (1) of the Land Surveyors' Regulations 1998,
 I certify that this plan is correct.

Checked by *[Signature]*



Entered on *[Signature]* Trinidad & Tobago Land Surveyor... 25.09.2003

Z	11.36	Ir. fd.
R	183° 56'	
R		
	106.48	2.82 = S
	100.58	3.02 = X
	89.01	3.25 = O
	80.47	3.42 = N
	61.60	3.80 = M
	60.35	3.82 = L
	40.23	4.63 = K
	34.20	4.87 = J
	30.18	5.03 = I
	20.12	5.43 = H
	0.00	
Q	155° 15'	
Q		
	36.17	7.44 = G
	31.18	5.03 = F
	20.12	2.62 = E
	0.00	
P	110° 19'	
P		
	37.91	
	33.31	11.27 = D
	13.19	12.47 = C
Y =	0.00	
	-6.93	13.48 = B
		9° 05'

2a Vol. 4577 fol. 407

2b Ud. 4586 fol. 151
Azim & Rose Mohammed

2c Ud. 4586 fol. 159
Azim & Rose Mohammed

2d Azim & Naim Mohammed
Ud. 4586 fol. 143

NAPARIMA MAYARO ROAD 20.12 m. WIDE

RIO CLARO TR.

15920 172

P/A

25 SEP 2003
Lands and
Surveys
Division

1289/188