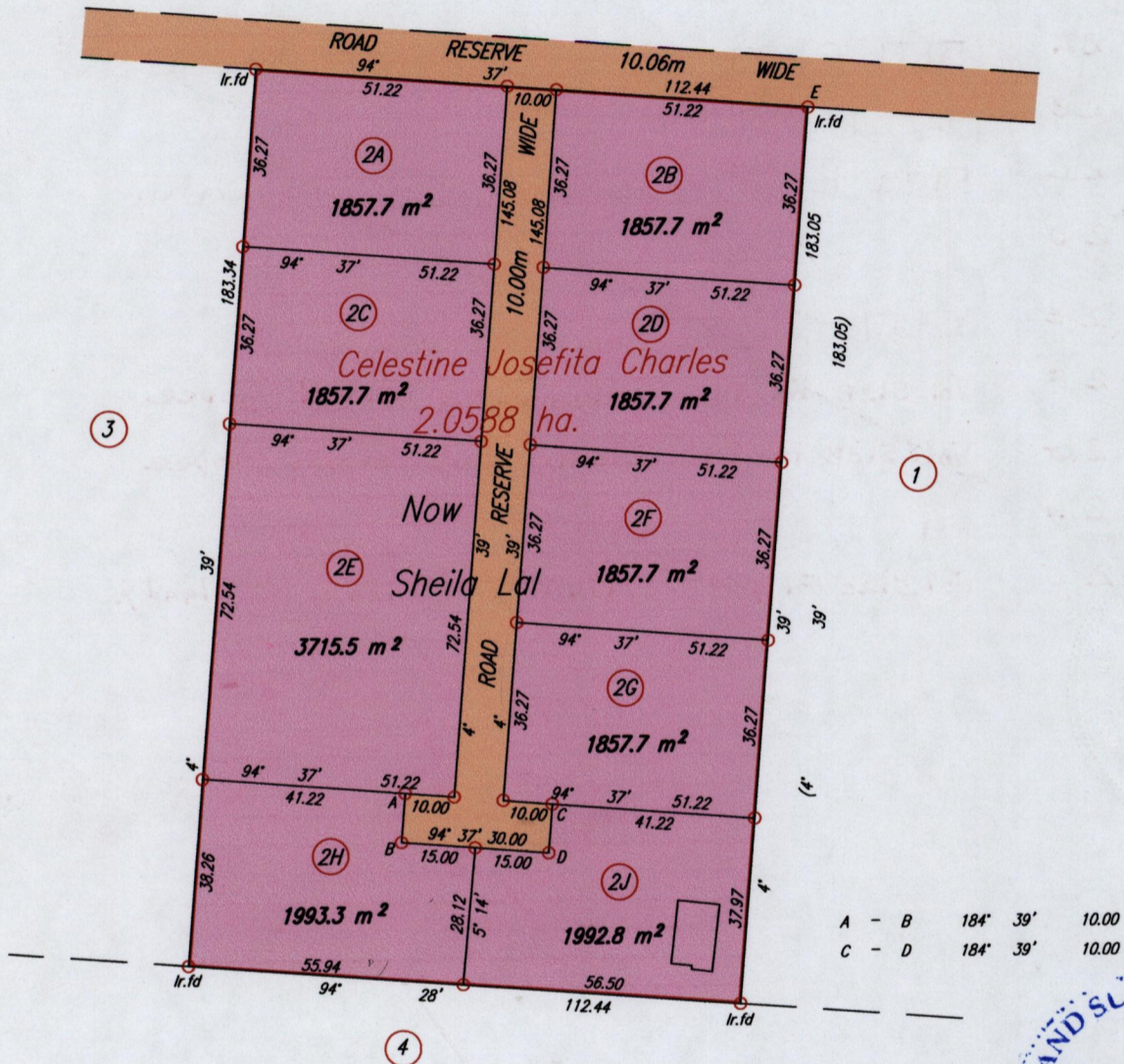
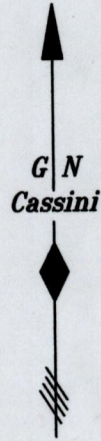


R.P.O. Vol. 239  
C.T. Vol. 3633  
Vol. 5120

Fol. 429 **1300**  
Fol. 41  
Fol. 401.

**98**

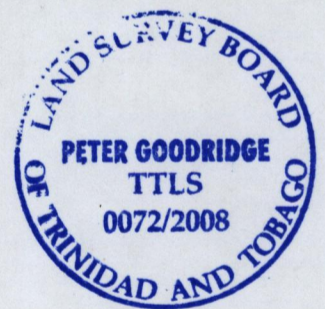
Cadastral Sheet I.21.B. &C. **1E**  
Ward of Tobago  
Parish of St. Patrick  
6/b/3



A - B	184° 39'	10.00
C - D	184° 39'	10.00

Coordinates of E (lr.fd): 738663mE, 1234136mN  
U.T.M. 20 WGS 84 (+/- 5.00m)  
G.P.S. Direct Observation

See L&S Bk. 1221 Fol. 211  
Plan E.H. 128



Approved ... *[Signature]* ...  
Director of Surveys  
2008.12.12  
Coordinates obtained from hand held G.P.S.

SCALE 1:1500

Distances are in METRES

○ Denotes Iron put except where otherwise stated

Bearings are Cassini Grid based on Solar Observations

PLAN of 9 Parcels of land coloured pink in the Ward of Tobago  
Containing together one point eight eight four eight hectares  
Surveyed by me, with due authority, in July 2008

In accordance with Regulation 25 (1) of The Land Surveyors Regulations 1998,

I certify that this plan is correct.

Checked by ... *[Signature]* ...

Entered on .....

*[Signature]* TTLS

Trinidad & Tobago Land Surveyor  
C:\LESS 2008\TOBAGO\SALANDY,ALAN\dwg. 4th December 2008  
FILE NO:TS056



Lot No.	Volume & C.T.	NAMES.
2A	5179 fol 97	Alan & Joanne Salandy.
2B	5177 fol 187	Michael & Pauline Moorilal
2C	5179 fol 107	Alan & Joanne Salandy.
2D		
2E	5157 Fol: 27	Diane Hadad
2F	Vol. 5138 Fol. 79	Dhanmatee Singh Gopee
2G	Vol. 5138 Fol. 89	Dhanmatee Singh Gopee
2H	Vol 5157 fol 29	Diane Hadad.
2J.	Vol 5120 fol 409	Alan & Joanne Salandy.



1300/98  
~~1332/99~~  
 1427/185