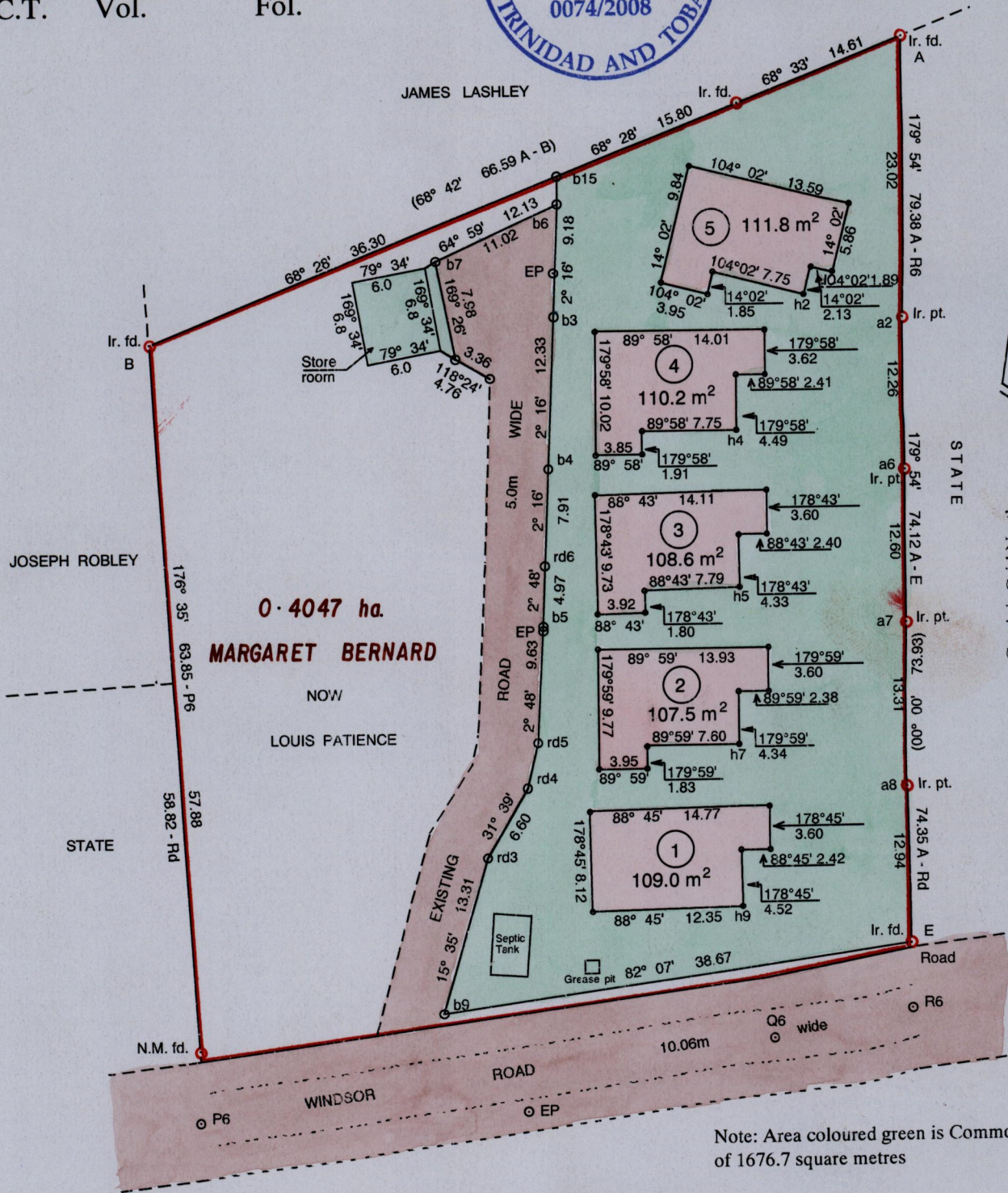


Cadastral Sheet I.19.E.

Ward of Tobago

Parish of St. Mary

Vol. 5064 Fd. 169  
R.P.O. Vol. 651 Fol. 419.  
C.T. Vol. Fol.



Note: Area coloured green is Common Area of 1676.7 square metres

SCALE 1 : 500

Distances are in metres

- o Denotes corner of building
- o Denotes traverse station
- o EP Denotes Electricity Pole

Line	Brg.	Dist.
rd4 - rd5	13° 43'	3.72
b15 - b6	182° 16'	2.27
a2 - h2	283° 26'	8.34
a6 - h4	283° 53'	14.16
a7 - h5	282° 51'	14.07
a8 - h7	283° 54'	14.24
R6 - Q6	258° 20'	11.43
Q6 - P5	262° 28'	47.44
E - h9	282° 51'	14.06

Approved *[Signature]*  
Director of Surveys  
2008.7.23

Bearings are Cassini Grid based on solar observations

PLAN of 5 Parcels of land coloured pink (the footprint of the existing buildings) in the Ward of Tobago Containing together five hundred and forty seven point one square metres Surveyed by me, with due authority, in June 2006 at the request of Louis Patience In accordance with regulation 25 (1) of the Land Surveyors' Regulations 1998, I certify that this plan is correct.

Checked by *R-17/07/08*  
Entered on.....

*Winston Doyle*  
Trinidad & Tobago Land Surveyor *20<sup>th</sup> March*.....2008