

B N<sup>o</sup> 4330

R.P.O. Vol. 74

Fol. 21

Ward of Tobago

C.T. Vol. 3411

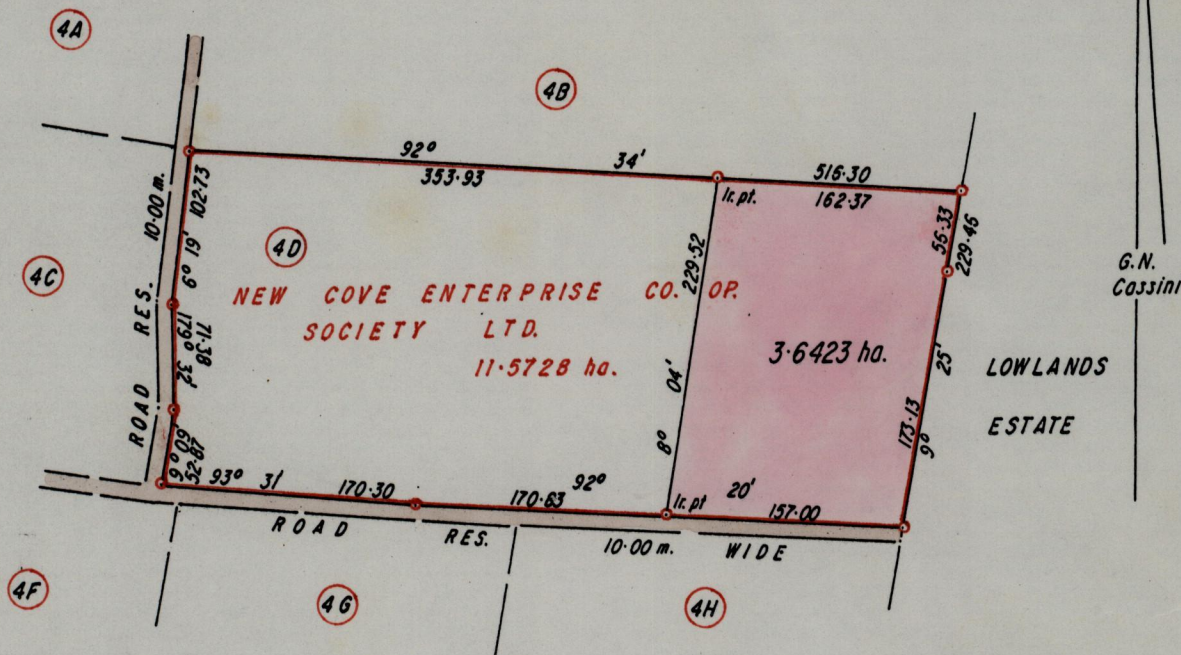
Fol. 513

Parish  
County of St. Patrick

Vol. 5059 Fol. 21

Cadastral Sheet  $\frac{1J}{2/0}$ ,  $\frac{1J}{2/6}$ ,  $\frac{1J}{2/8}$  1.21.

General Plan R.H. 191  
C.T. Vol. 3299 fol. 89



o Denotes Iron found unless otherwise stated

Approved *Tyrone Deane*  
Director of Surveys  
99.1.13

SCALE 1 / 5000

Bearings are based on Solar Obs.  
Note: To obtain compass bearings add/subtract 26 minutes Distances are in metres

PLAN of a Parcel of land coloured pink in the Ward of Tobago  
Containing three point six four two three hectares  
Surveyed by me, with due authority, in May 1998

I certify that I have complied with rule 76 under section 14(2)(d) of the  
Land Surveyors' Ordinance, 1952, and that this plan is correct.

Checked by *CH 4/1/99* *Peter W.A. Goodridge*

Entered ..... Land Surveyor, Trinidad and Tobago *12<sup>th</sup> December* 1998

**PETER W.A. GOODRIDGE**  
B.Sc. (Hons)  
Licensed Land Surveyor