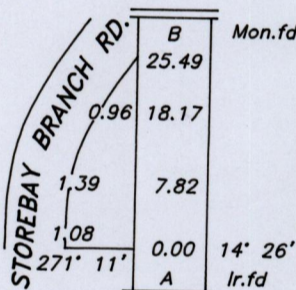
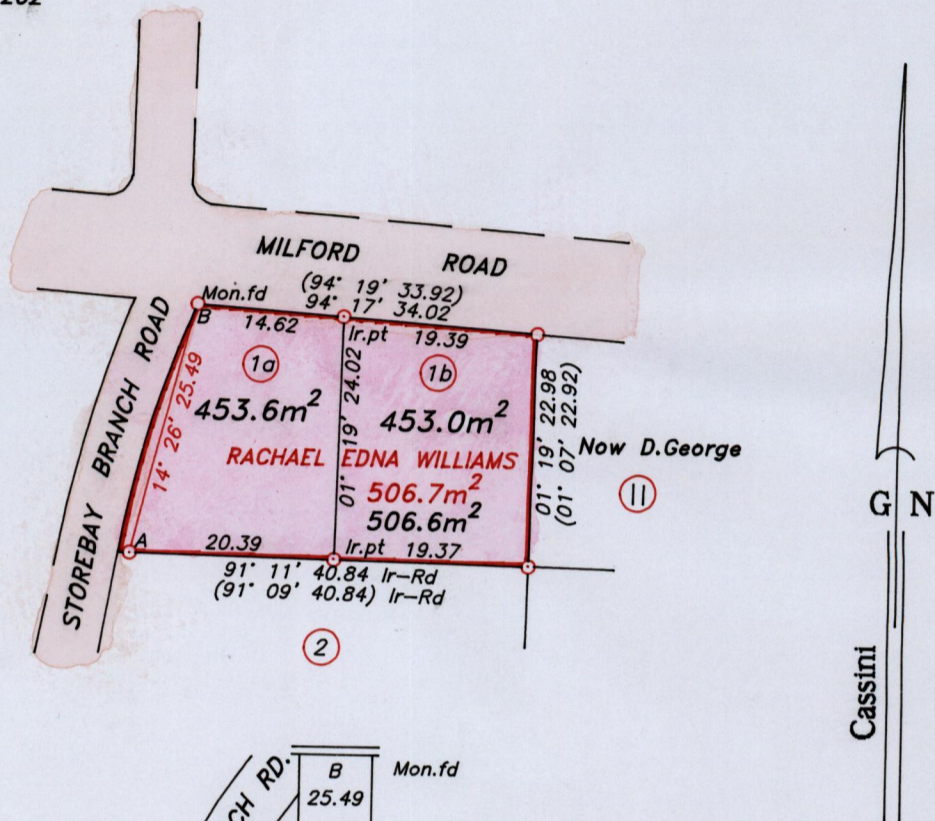


Vol 4795 Fol 347
R.P.O Vol. 520 Fol. 469
C.T Vol. 2630 Fol. 331

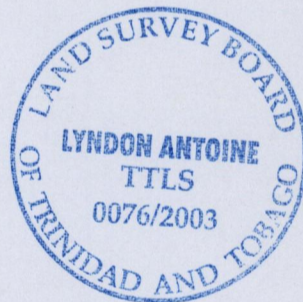
Cadastral Sheet I.21.B ^{1E}/_{6/a/3}
Ward of Tobago
Parish of St. Patrick

Vide Bk. 1103 Fol. 202



Mary Williams

Approved
[Signature]
Director of Surveys 2003.5.20



○ Denotes iron found, except otherwise stated.

SCALE 1:750

Bearings are grid based on solar observations

Distances are in metres

PLAN of 2 parcels of land coloured pink in the Ward of Tobago
Containing together nine hundred and six point six square metres.

Surveyed by me, with due authority on 30th January 2002.

In accordance with Regulation 25 (1) of the Land Surveyors' Regulation 1998, I certify that this plan is correct.

Checked by *[Signature]* 15 May 03
Entered.....

[Signature]
Trinidad & Tobago, Land Surveyor..... 2003.
1st May 20

path:02SURVEY\7043\STHOMAS.DWG

STAMP: 3005 JAN 2003

19 - Vol 4795 Fol 351 Mary Williams.

07 MAR 2002
Lands and
Surveys
Division