

C.T. Vol. Fol.

C.T. Vol. 3617 Fol. 361

Vol 4951 Fol 29

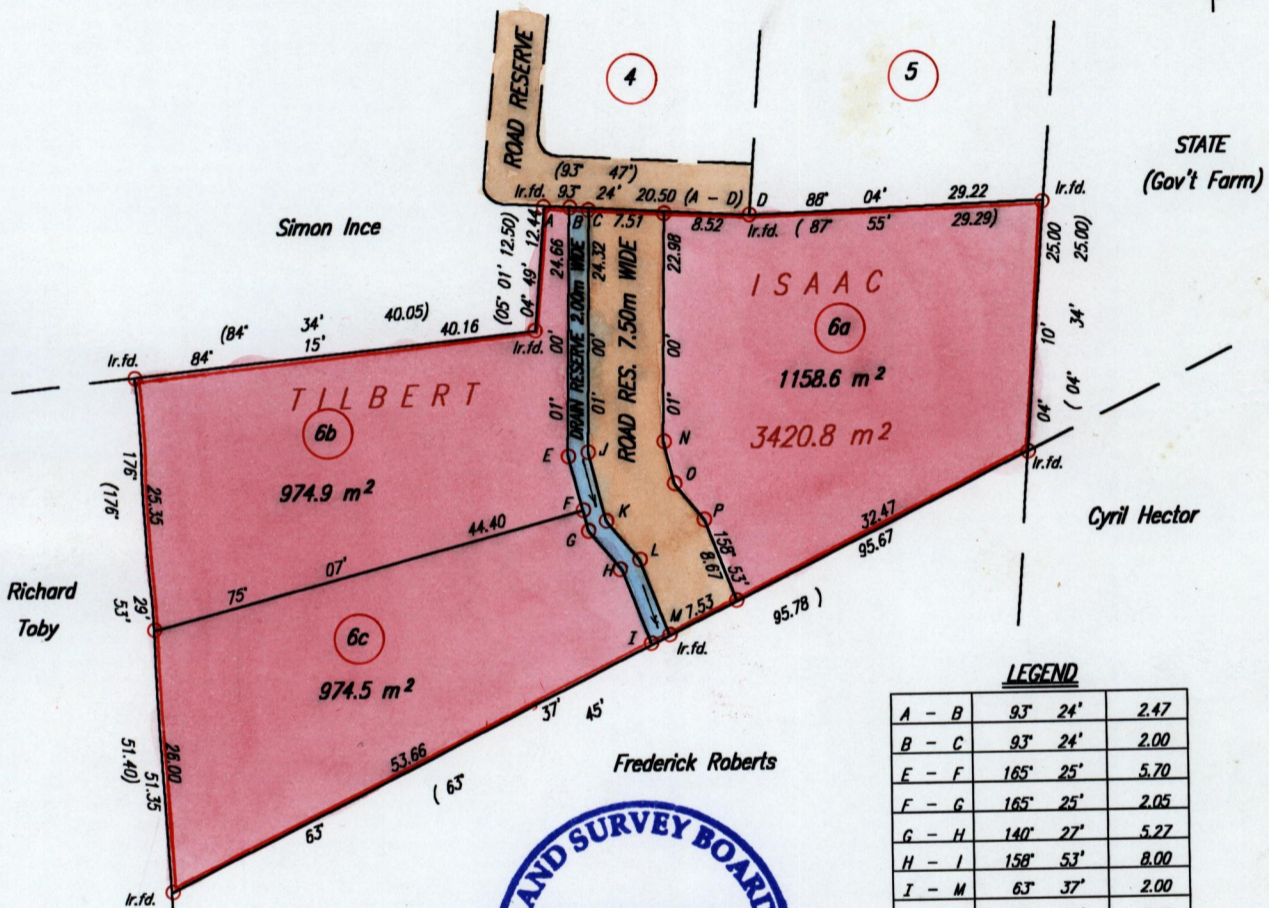
Original Survey in Bk. 1211 Fol. 13

Cadastral Sheet I.17.N. 1F
6/c

Ward of Tobago

Parish of St. Andrew

Vol. 4951 Fol. 29



LEGEND

A - B	93° 24'	2.47
B - C	93° 24'	2.00
E - F	165° 25'	5.70
F - G	165° 25'	2.05
G - H	140° 27'	5.27
H - I	158° 53'	8.00
I - M	63° 37'	2.00
J - K	165° 25'	7.02
K - L	140° 27'	5.15
L - M	158° 53'	8.14
N - O	165° 25'	4.33
O - P	140° 27'	4.71



Approved

Director of Surveys
2003-07-20

SCALE 1:750

Distances are in METRES

○ Denotes Iron put except where otherwise stated

Bearings are Cassini Grid based on Solar Observations

PLAN of 3 Parcels of land coloured pink in the Ward of Tobago

Containing together three thousand one hundred and eight square metres

Surveyed by me, with due authority, in May 1999

In accordance with Regulation 25 (1) of The Land Surveyors' Regulations 1998.

I certify that this plan is correct.

Checked by H.A. 2.13.

Entered on

Trinidad & Tobago Land Surveyor
20th July 2002

5a. VOL. 4951 FOL. 37 JAMES & JOANN WISE

5b.

5c.

