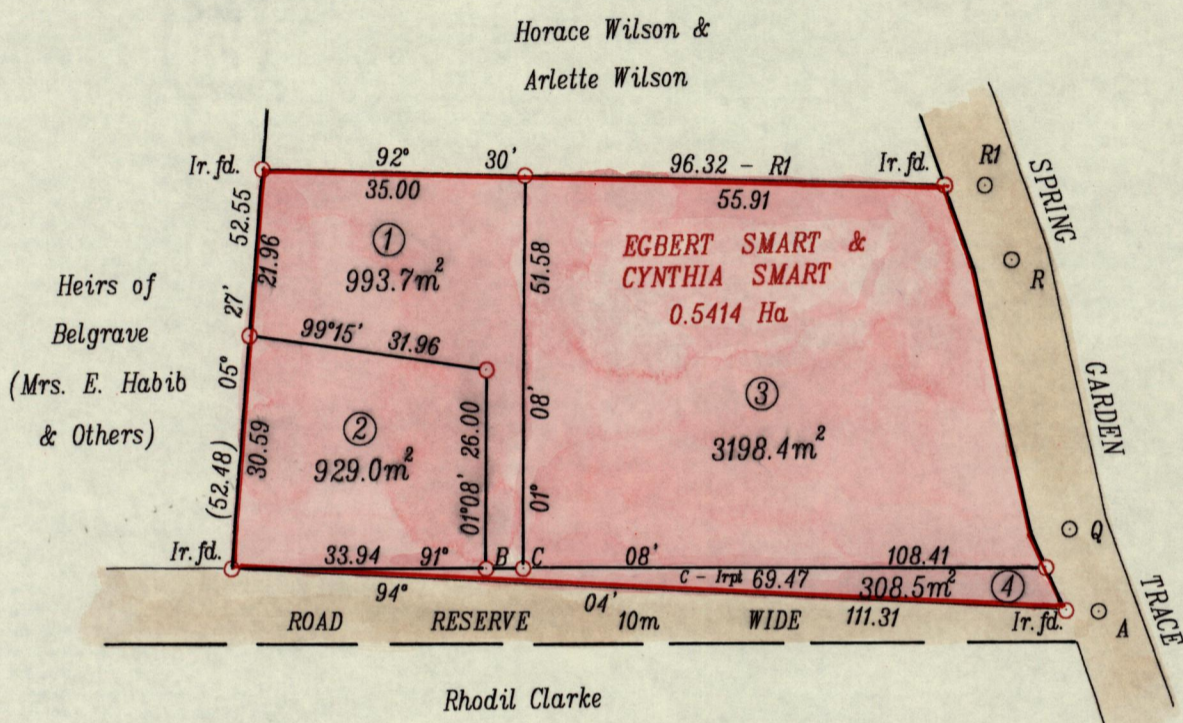


R.P.O. Vol. 2317 Fol. 491

C.T. Vol. 3242 Fol. 537

Vol. 4394 Fol. 469

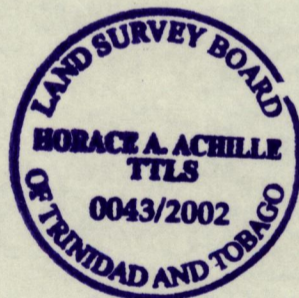
Cadastral Sheet I 17 F  $\frac{2G}{3/a}$   
 Ward of Tobago  
 Parish of St. Andrew



Rhodil Clarke

R#		
5.09	10.45	4.97
5.03	10.06	5.03
5.03	0.0	5.03
	R	341° 11'
5.03	36.20	5.03
5.03	0.0	5.03
	Q	348° 44'
5.03	11.54	5.03
	Q	
	Irpt 4.67	7.99
	Irfd 4.02	1.70
	4.35	0.0
		5.07
	A	341° 11'

LEGEND		
LINE	BEARING	DISTANCE
A - Q	341° 11'	11.54
Q - R	348° 44'	36.20
R - R1	341° 11'	10.45
B - C	91° 08'	5.00
Q - Irpt	213° 57'	5.86
A - Irfd	274° 04'	4.37



SCALE 1 : 1000

Distances in metres

Approved: *[Signature]*  
 Director of Surveys  
 1503 27. 28

Bearings are Cassini Grid based on Solar Observations

⊙ Denotes Iron put unless otherwise stated

Plan of Four parcels of land coloured pink in the Ward of Tobago  
 Containing together Zero point five four three zero hectares. Parcel No. 4 occupied by Road.  
 Surveyed by me with due authority on July 15, 2000.  
 I hereby certify in accordance with Reg. 25(1) of the Land Surveyors' Regulations 1998  
 that this plan is correct.

Checked by *[Signature]*

Entered on .....

*Horace A. Achille*  
 4<sup>th</sup> May 2001  
 Trinidad & Tobago Land Surveyor



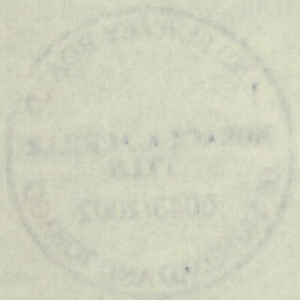
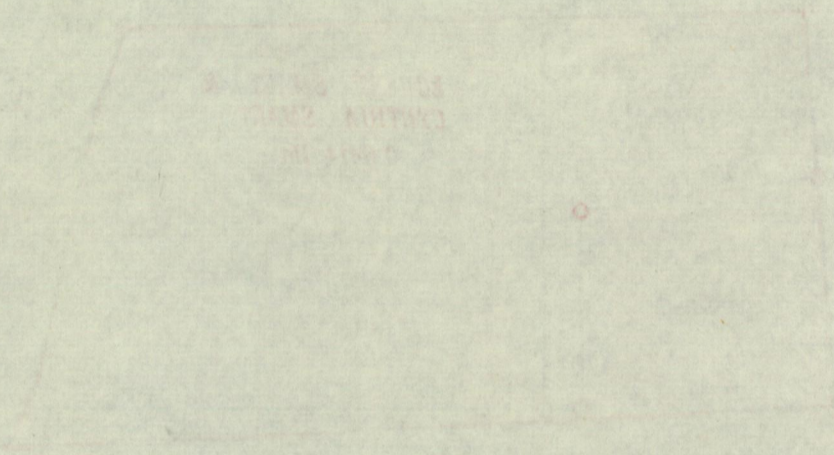
08

0001

1. Vol. 4738 Fol. 383 Roscynara SMART

2. Vol 4605 Fol. 429 PATRICK PARK

3.



8 NOV 2002  
Lands and  
Surveys  
Division