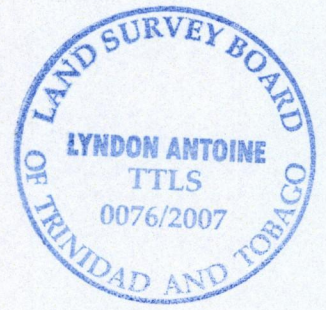
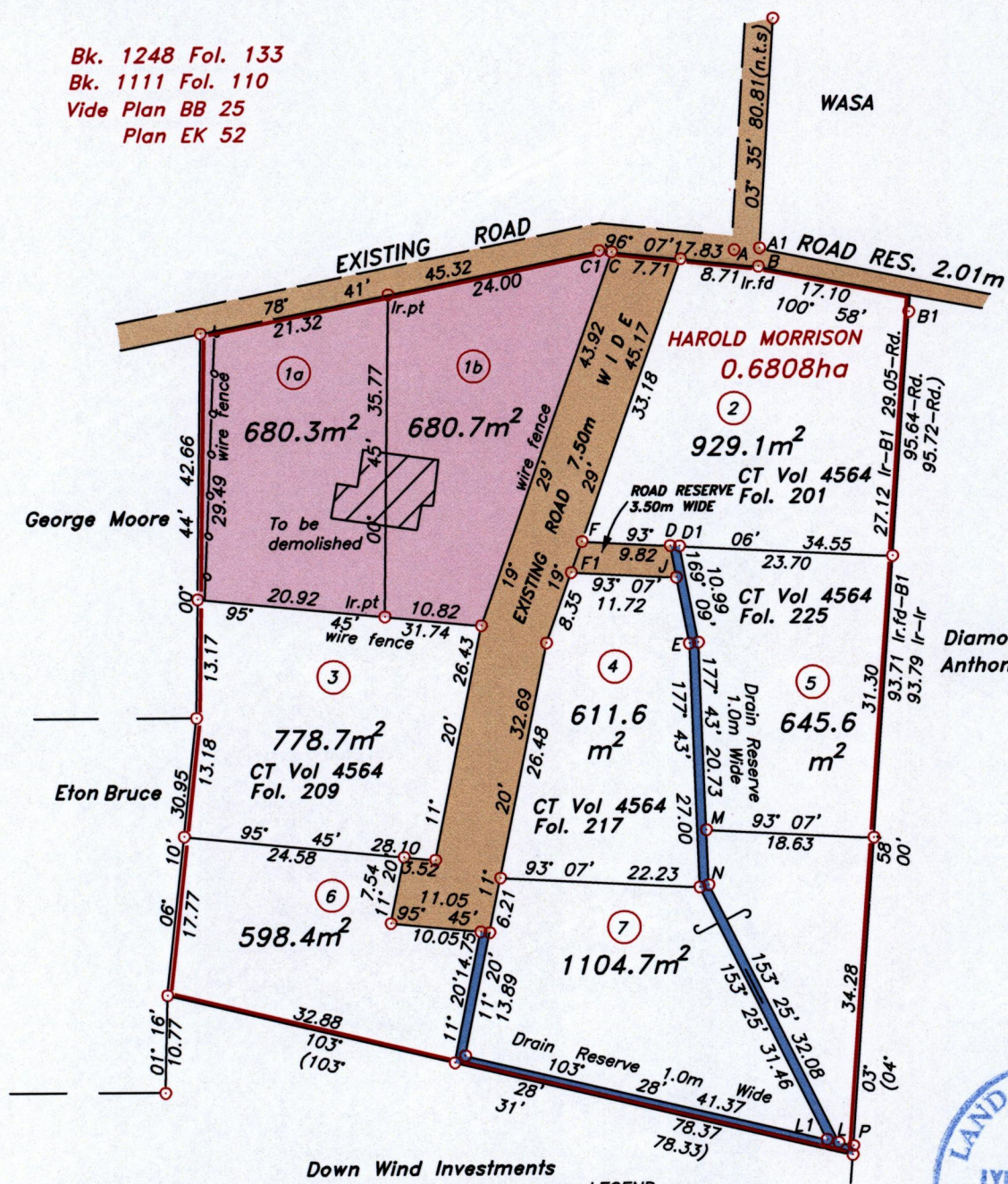


Vol. 4894 Fol. 359

U.P.R.N.....
R.P.O Vol. Fol.
C.T Vol. 4467 Fol. 267
SIGNAL HILL

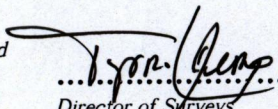
Cadastral Sheet I.17.M $\frac{1F}{6/c}$
Ward of Tobago
Parish of St. Andrew

Bk. 1248 Fol. 133
Bk. 1111 Fol. 110
Vide Plan BB 25
Plan EK 52



LEGEND

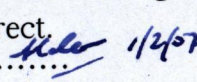
LINE	AZIMUTH	DISTANCE
A-A1	86° 37'	2.82
B-B1	107° 16'	17.44
M-N	177° 43'	6.13
L1-L	103° 28'	1.31
L-P	103° 28'	1.68
C1-C	96° 07'	1.41
F-F1	199° 29'	3.64
D-D1	93° 06'	1.03
D-J	169° 09'	3.61
J-E	169° 09'	7.55

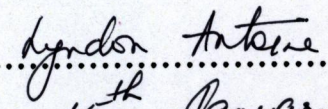
Approved 
 Director of Surveys
 2007-02-08
 Denotes iron found, except otherwise stated.

SCALE 1:750

Bearings are grid based on solar observations

Distances are in metres

PLAN of 2 parcels of land coloured pink in the Ward of Tobago
 Containing together one thousand three hundred and sixty one point zero square metres.
 Surveyed by me, with due authority on 28th October 1999
 In accordance with Regulation 25 (1) of the Land Surveyors' Regulations 1998, I certify that this plan is correct.
 Checked by  1/2/07
 Entered

Trinidad & Tobago Land Surveyor..... 
 15th January 2007.
 Path: 99SURVEY\M035\HMORISON.DWG

Lot. 1a Vol. 4894 Fol. 373 Cherrie Alexander
Lot. 1b Vol. 4894 Fol. 363 Cecelia Hall

