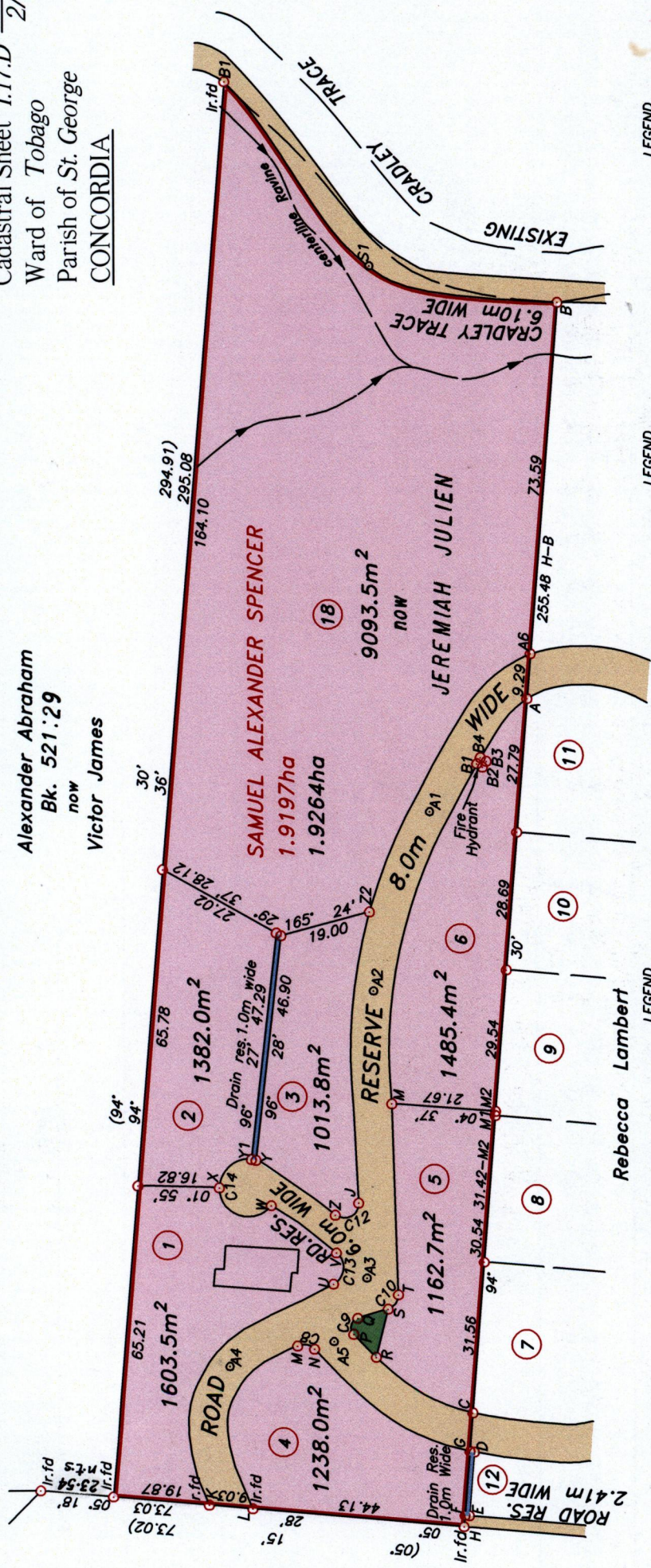


Alexander Abraham
 Bk. 521:29
 now
 Victor James

U.P.R.N.....
 R.P.O Vol.60 Fol.519
 C.T Vol.3155 Fol.51
 Vide Bk.520 Fol.53
 Plan E.B. 166

Vol 5035 Fol 471

Concordia
 Estates Ltd.
 now
 Alan Porter



Rebecca Lambert

LEGEND

NUMBER	DELTA ANGLE	CHORD DIRECTION	RADIUS	CHORD LENGTH
C8	69° 52'	191° 03'	3.12	3.58
C9	119° 12'	104° 07'	2.00	3.45
C10	75° 29'	125° 58'	3.00	3.67
C13	112° 59'	95° 28'	4.00	6.67
C12	131° 45'	153° 01'	3.00	5.48
C14	270° 57'	82° 57'	6.00	8.42

SCALE 1:1250
 Distances are in metres

Bearings are grid based on solar observations

PLAN of 7 parcels of land coloured pink in the Ward of Tobago

Containing together one point six nine seven nine hectares.

Surveyed by me, with due authority on 8th March 2001 & 24th July 2007

In accordance with Regulation 25 (1) of the Land Surveyors' Regulations 1998, I certify that this

plan is correct.

Checked by M.A. 23/11/07

Entered.....

cyndra Antone
 5th September 2007.

Trinidad & Tobago Land Surveyor
 path: 01SURVEY\M097\GMCKELA.DWG

LEGEND

LINE	DIRECTION	DISTANCE
C-G	274° 30'	8.07
G-D	190° 10'	0.91
D-E	274° 30'	13.38
E-F	05° 22'	0.91
H-F	94° 30'	2.41
F-G	94° 30'	13.46
L-M	105° 30'	35.19
M-N	191° 03'	3.58
N-P	159° 50'	8.69
R-P	45° 49'	6.69
P-Q	104° 07'	3.45
Q-S	163° 43'	6.59
S-T	125° 58'	3.67
R-S	104° 02'	10.30
T-M	88° 12'	39.83
M-A	108° 39'	88.67
A6-Z2	302° 17'	63.01
B2-B3	123° 24'	1.44
B3-B4	32° 23'	1.47
B4-B1	300° 12'	1.48

LEGEND

LINE	DIRECTION	DISTANCE
Z2-J	272° 16'	60.48
J-Z	333° 01'	5.48
Z-Y	35° 05'	20.04
Y-Y1	11° 03'	0.98
Y1-X	318° 52'	8.85
X-W	199° 25'	11.41
W-V	216° 31'	16.77
V-U	275° 28'	6.67
U-K	299° 24'	52.70
A6-A1	302° 58'	38.78
A1-A2	287° 30'	39.03
A2-A3	271° 28'	59.81
A3-A4	327° 28'	33.80
A4-K	278° 34'	29.21
G-A5	39° 20'	36.45
M1-M2	94° 30'	0.89
B1-B2	210° 44'	1.39
B4-A	128° 45'	15.55
B-S1	11° 30'	40.00
S1-B1	52° 08'	48.65

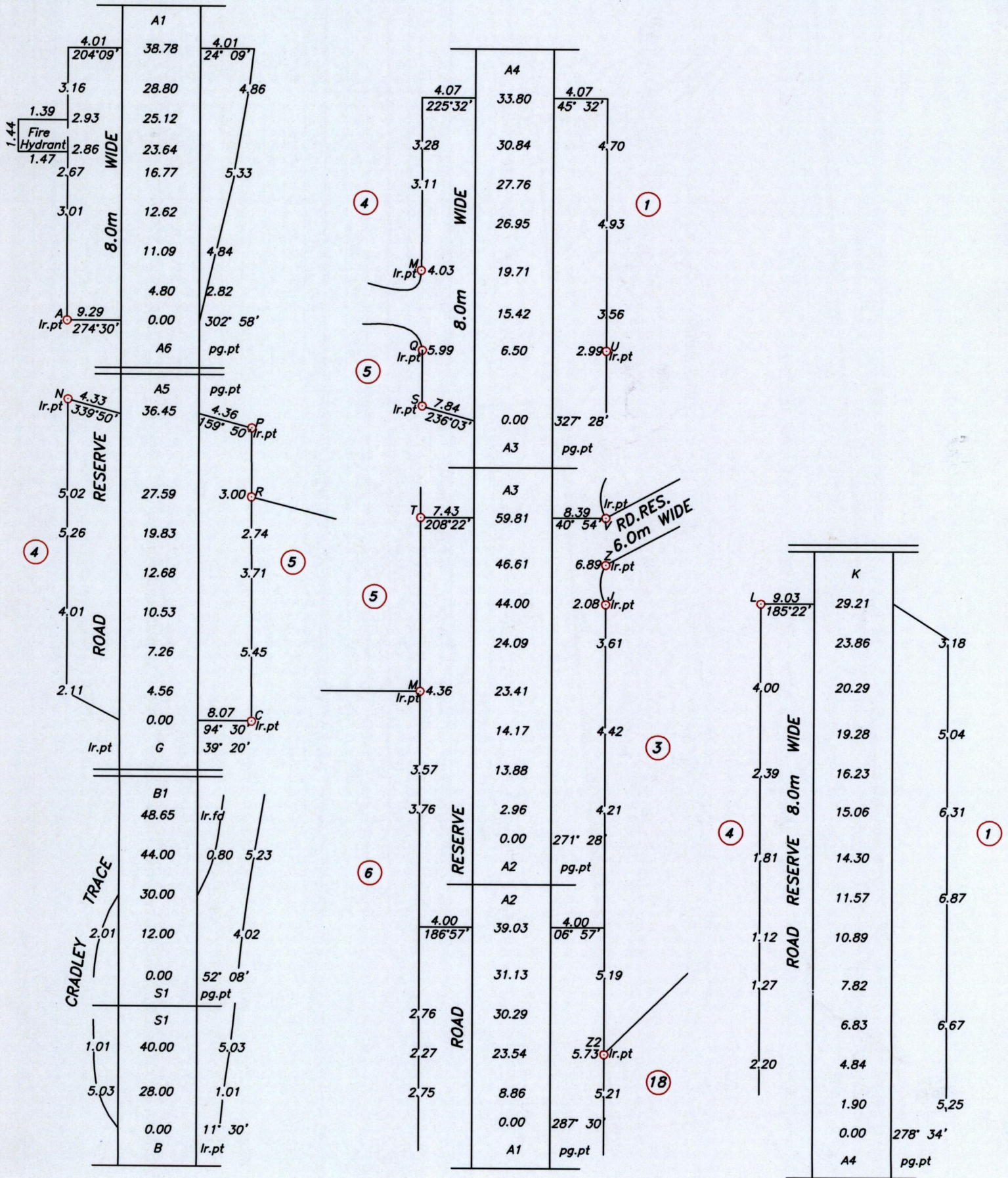
1300

73

Cassini

1.
2.
3.
4.
5.
6.
18.

Vol 5035 Fol 479 Kathy Ann Smith & Nigel Reece.



Handwritten initials or signature in the bottom right corner.