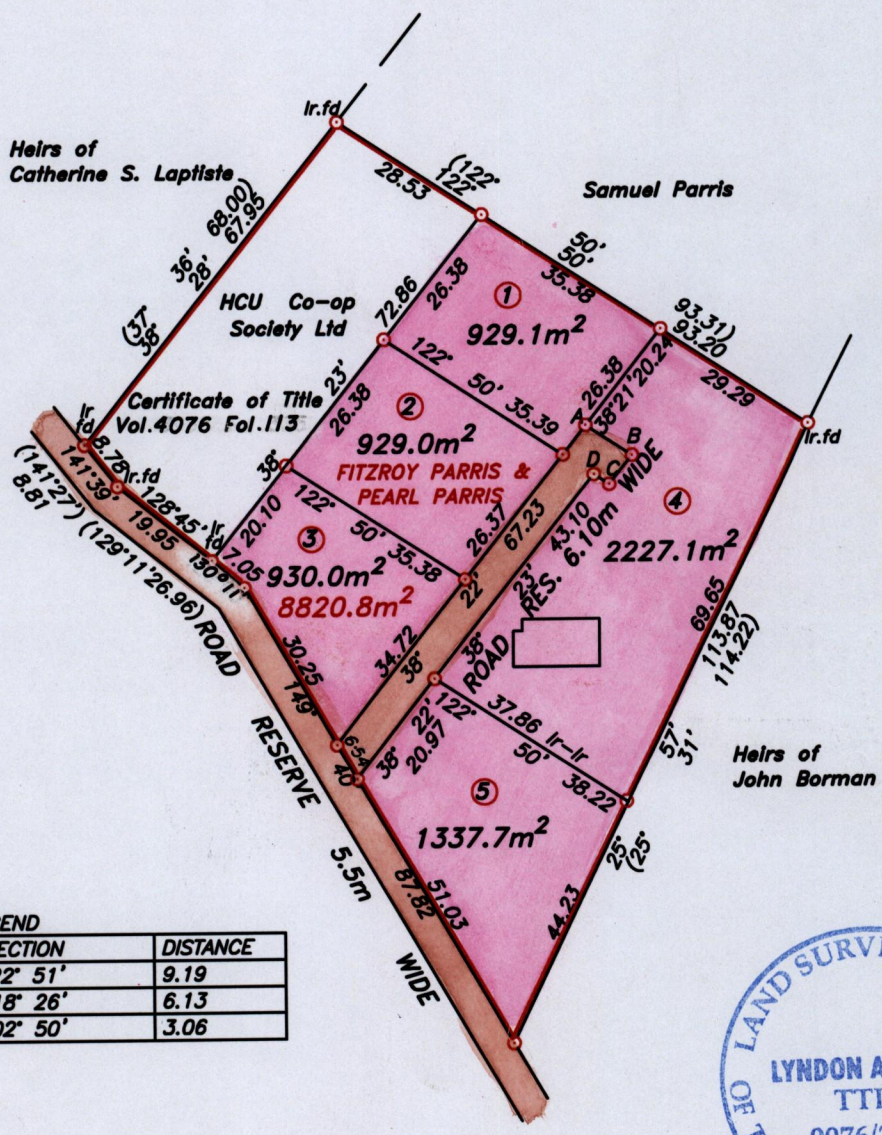


Vol. 4701 Fol. 287
R.P.O Vol. Fol.
C.T Vol. 3217 Fol. 419
U.P.R.N.....

Cadastral Sheet I.17.M-1F
Ward of Tobago
Parish of St. Andrew

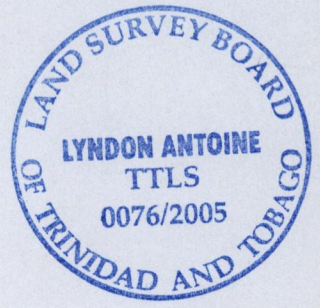
CARNBEE

Vide Plan R.B 36
Bk. 1159 Fol 3



LEGEND

LINE	DIRECTION	DISTANCE
A-B	122° 51'	9.19
B-C	218° 26'	6.13
C-D	302° 50'	3.06



Approved *[Signature]*
Director of Surveys
2005-7-25

○ Denotes iron put, except otherwise stated.

SCALE 1:1250

Bearings are grid based on solar observations

Distances are in metres

PLAN of 5 parcels of land coloured pink in the Ward of Tobago
Containing together six thousand three hundred and fifty two point nine square metres.
Surveyed by me, with due authority on 26th March 2004

In accordance with Regulation 25 (1) of the Land Surveyors' Regulations 1998, I certify that this plan is correct.

Checked by *[Signature]* 2005-7-20
Entered.....

Lyndon Antoine
25th February 2005.

Trinidad & Tobago Land Surveyor.....
path: \\Main\05Survey\POBB\KPARRIS.DWG

Lot.1

Lot.2 Vol. 4994 Fol. 315 Juliana Alexander

Lot.3 Vol. 4724 Fol. 217 Pearl Parris

Lot.4

Lot.5 CT. VOL. 5478 FOL. 427 - PEARL & KEITH PARRIS



1195/297