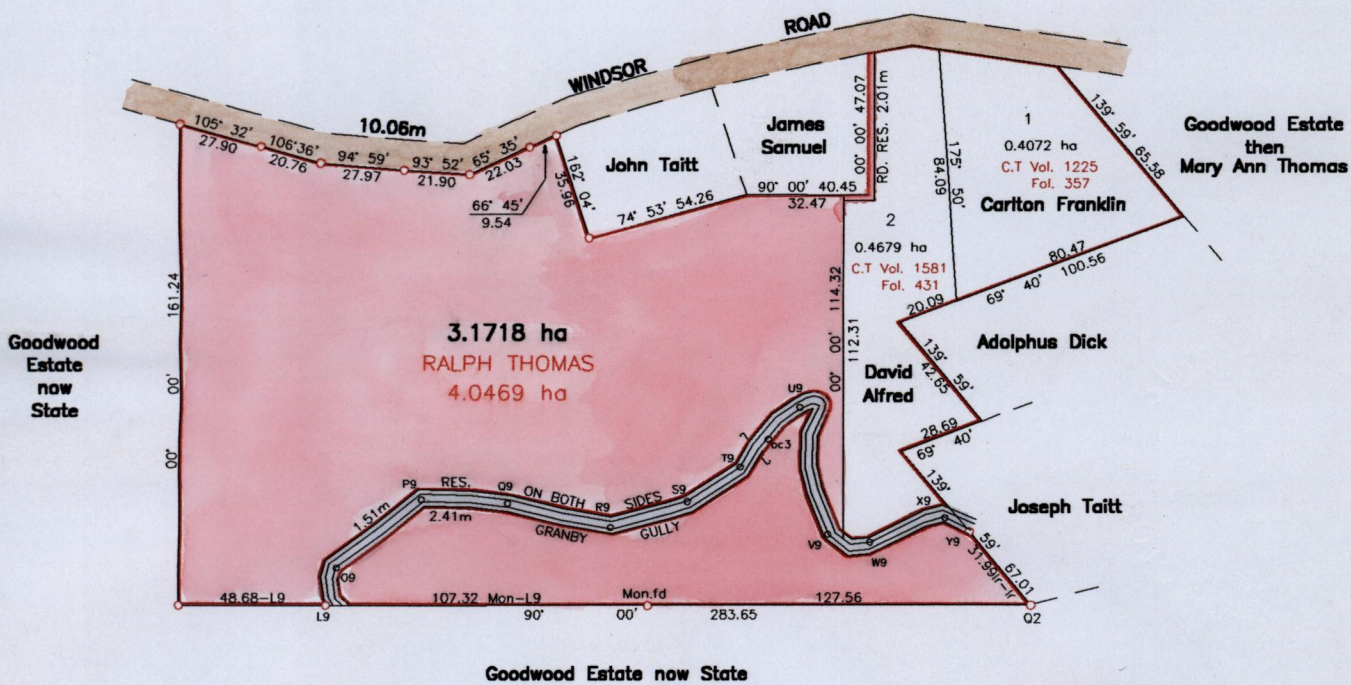


REMAINING PORTION

R.P.O Vol.654 Fol.627  
 C.T. Vol. Fol.  
 Vol 4867 Fol 317  
 S.O. No. 446/27  
 Refs: L&S BK.1155 Fol.569  
 Bk.643 Fol.84  
 Bk.952 Fol.241  
 Bk.1145 Fol.383

Cadastral Sheet I.19.E  
 Ward of Tobago  
 Parish of St. Mary



see fol 62

SCALE 1/2500

Distances are in Metres

Approved: *[Signature]*  
 Director of Surveys  
 2006-5-5

This is a true copy of a diagram of **four point zero four six nine hectares** originally granted to **RALPH THOMAS**, showing a portion coloured pink and containing **three point one seven one eight hectares** being the remainder after **two (2)** previous transfers of another portion of the land.

In accordance with Regulation 25 (1) of the Land Surveyors' Regulations 1998, I certify that this plan is correct.

Checked by: *[Signature]* *[Signature]*

Entered..... Trinidad & Tobago Land Surveyor *March 09, 2006*  
 Path=C:\Sdsk\Proj\Goodwood