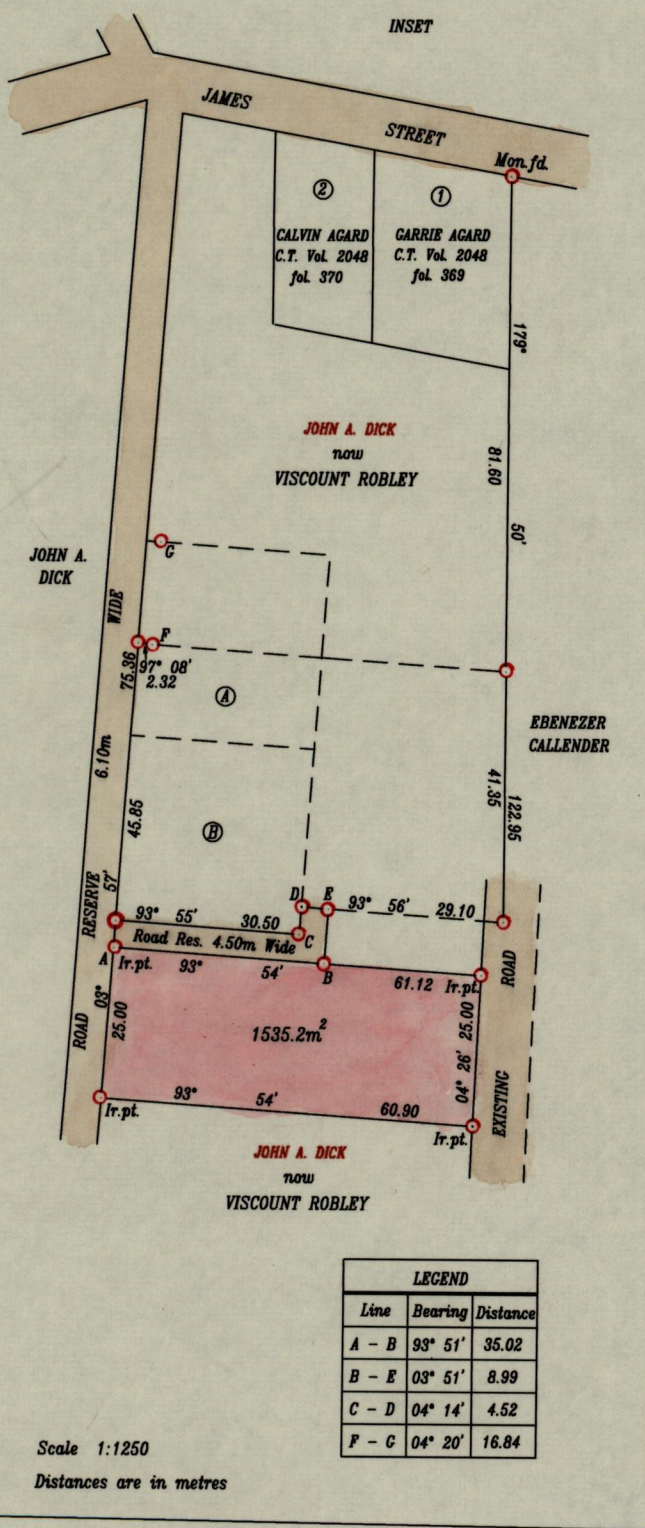
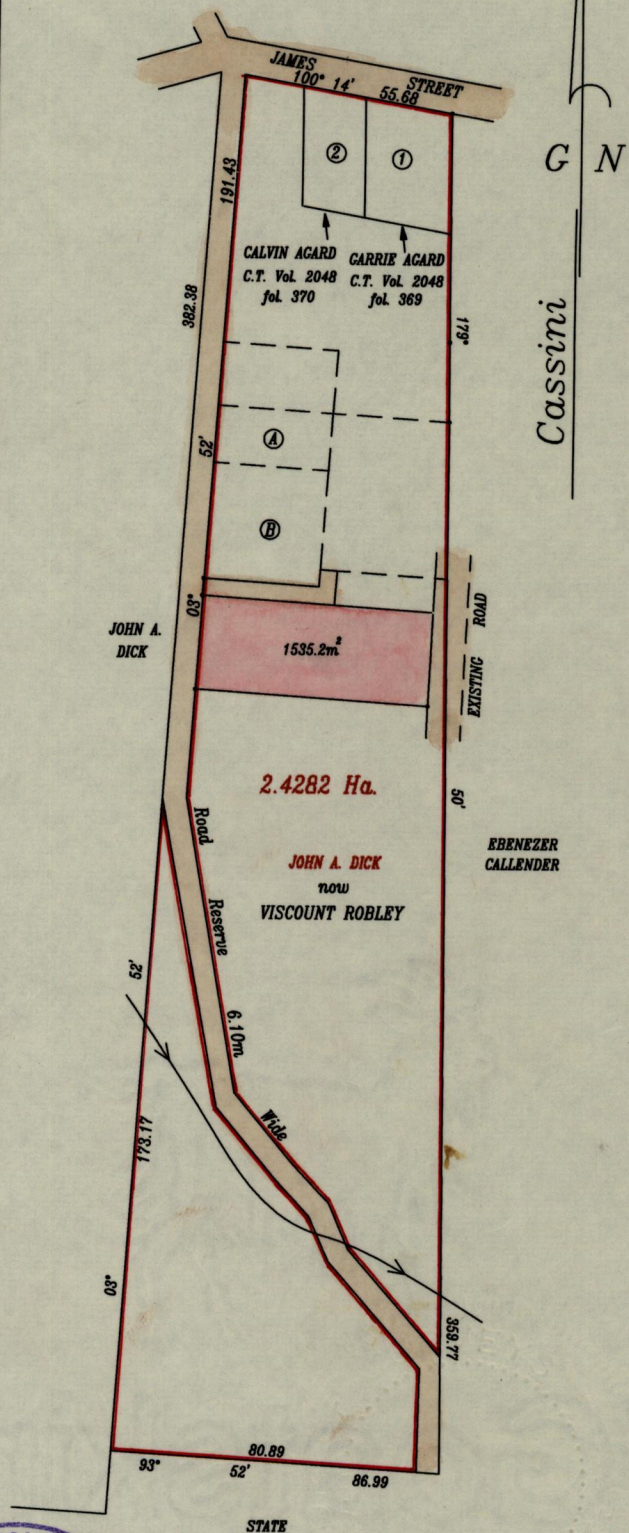


VOL. 4556 FOL. 23

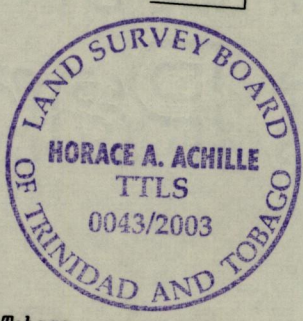


LEGEND		
Line	Bearing	Distance
A - B	93° 51'	35.02
B - E	03° 51'	8.99
C - D	04° 14'	4.52
F - C	04° 20'	16.84

Scale 1:1250
 Distances are in metres



Approved *[Signature]*
 Director of Surveys
 2003.9.19



STEVE SMALL

SCALE 1:2000
 Distances are in metres

Bearings are grid based on solar observation
 ○ denotes iron found except otherwise stated

Plan of Parcel of land coloured pink in the Ward of Tobago.
 Containing one thousand five hundred and thirty five point two square metres.
 Surveyed by me with due authority, in September 2000.

I hereby certify in accordance with Reg. 25(I) of the Land Surveyors' Regulations 1998 that this plan is correct.

Checked by *[Signature]* 09/09/03.

[Signature]
 2nd October

Entered on

Trinidad and Tobago Land Surveyor 2002