

REMAINING PORTION

Vd. 4665
R.P.O Vol.654
C.T. Vol.

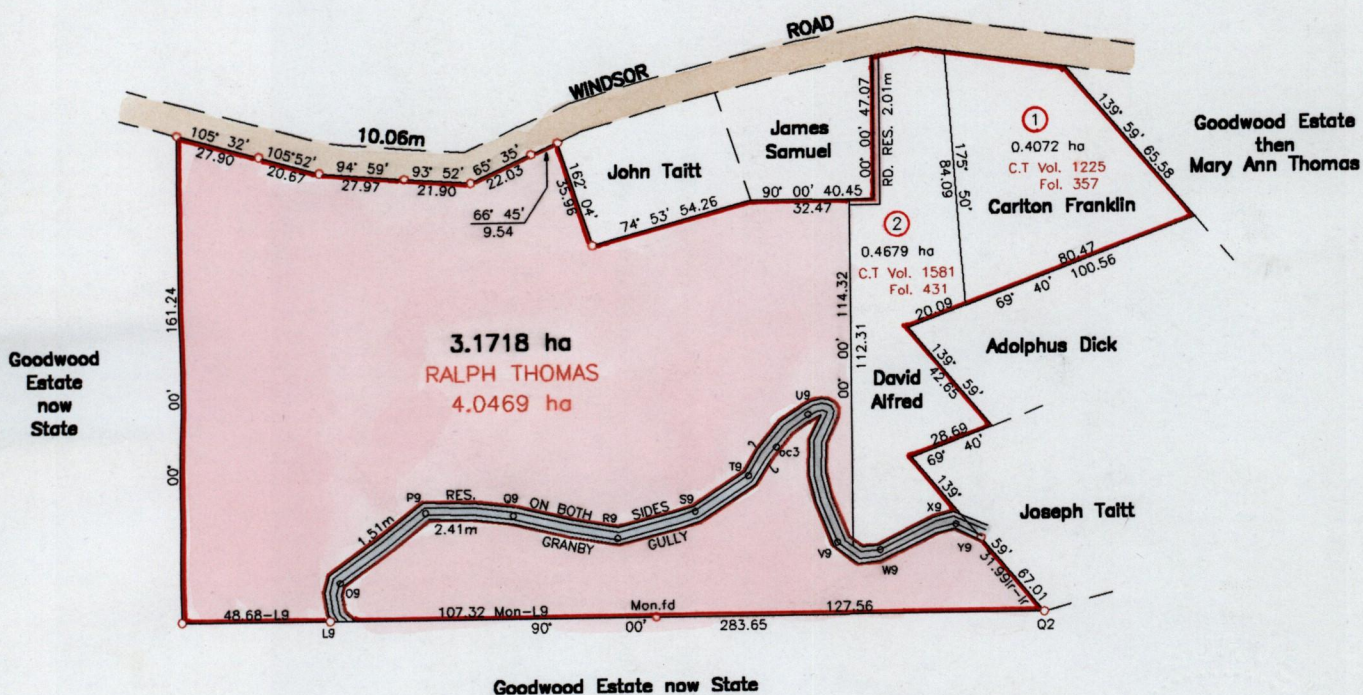
7d 121
Fol.627
Fol.

1300

Cadastral Sheet I.19.E
Ward of Tobago
Parish of St. Mary

62

S.O. No. 446/27
Refs: L&S BK.1155 Fol.569
Bk.643 Fol.84
Bk.952 Fol.241
Bk.1145 Fol.383



See Fol. 68
R. Thomas
SCALE 1/2500

Approved: *[Signature]*
Director of Surveys
2005-3-14

Distances are in Metres

This is a true copy of a diagram of **four point zero four six nine hectares** originally granted to **RALPH THOMAS**, shewing a portion coloured pink and containing **three point one seven one eight hectares** being the remainder after **two (2)** previous transfers of another portion of the land.

In accordance with Regulation 25 (1) of the Land Surveyors' Regulations 1998, I certify that this plan is correct.

Checked by *[Signature]* 2005-3-14

Entered..... Trinidad & Tobago Land Surveyor *[Signature]* April 10 2004
Path=C:\Sdsk\Proj\Goodwood

