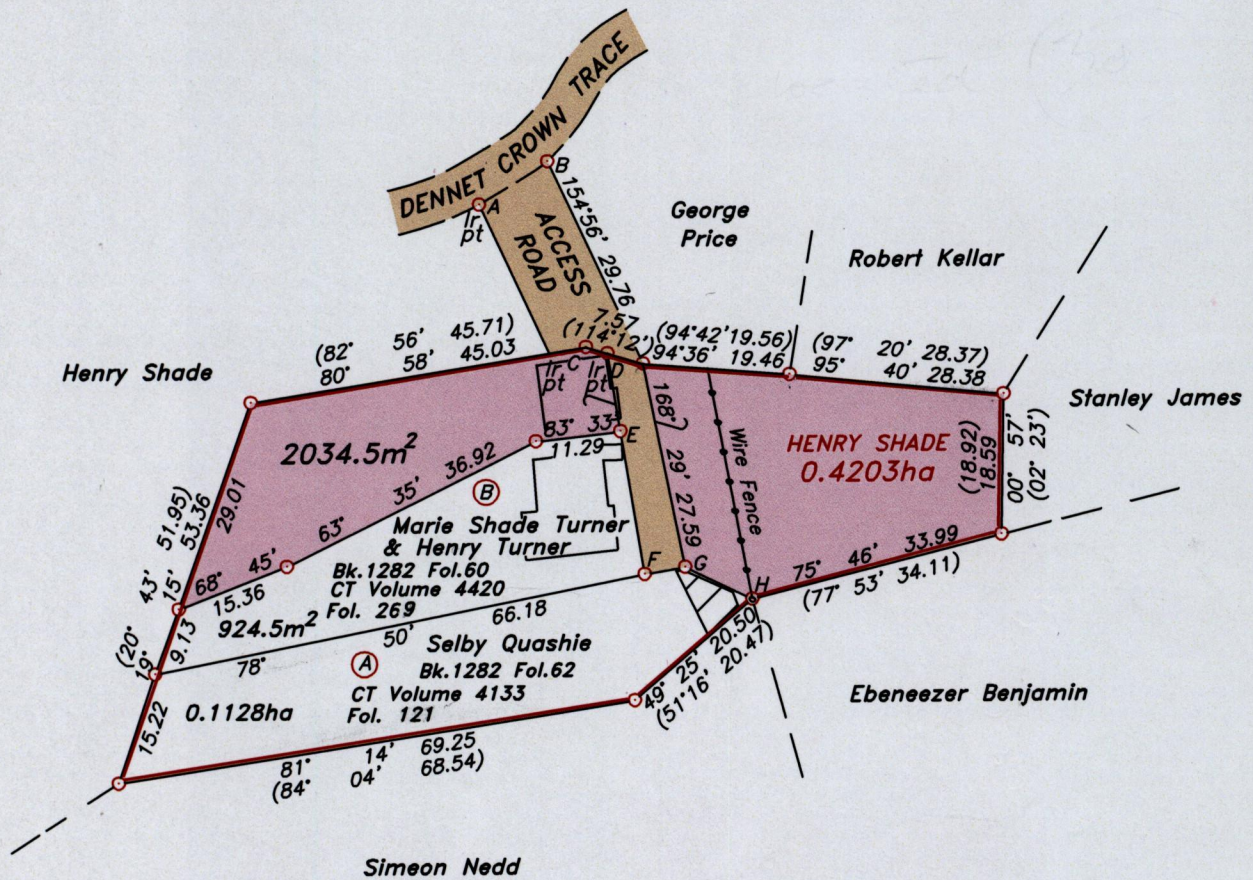


R.P.O Vol. Fol.
C.T Vol. 3440 Fol. 29

Cadastral Sheet 1.12.P $\frac{2D}{6/b}$
Ward of Tobago
Parish of St. George

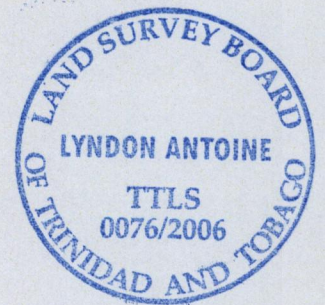
Vol. 4922 Fol. 281

Vide Bk. 1170 Fol. 121
Bk. 1145 Fol. 542



LEGEND

LINE	AZIMUTH	DISTANCE
A-B	57° 56'	10.72
C-D	106° 36'	2.97
D-E	170° 45'	10.48
E-F	170° 32'	19.27
F-G	80° 16'	5.44
G-H	115° 46'	9.86



Approved *[Signature]*
 Director of Surveys
 2006.10.17

○ Denotes iron found, except otherwise stated.

Bearings are grid based on solar observations

Distances are in metres

SCALE 1:1000

PLAN of a parcel of land coloured pink in the Ward of Tobago
 Containing two thousand and thirty four point five square metres.
 Surveyed by me, with due authority on 10th August 2005.

In accordance with Regulation 25 (1) of the Land Surveyors' Regulations 1998, I certify that this plan is correct.

Checked by *[Signature]*
 Entered *[Signature]*

[Signature]
 1st March

Trinidad & Tobago Land Surveyor..... 2006.