

U.P.R.N.....

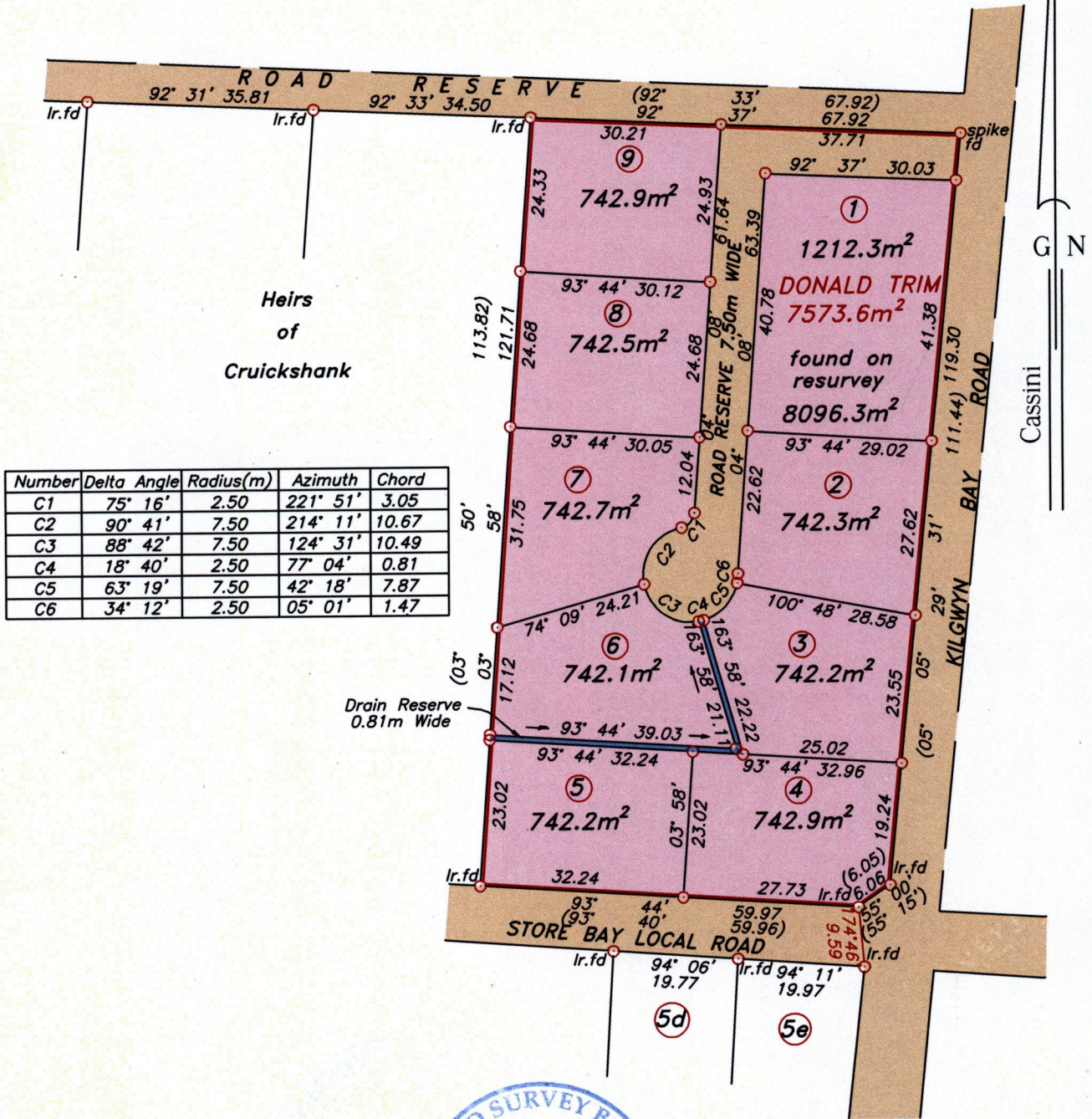
BON ACCORD

R.P.O Vol. Fol.
C.T Vol. 3566 Fol. 347

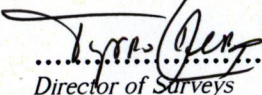
Vol. 4900 Fol. 521

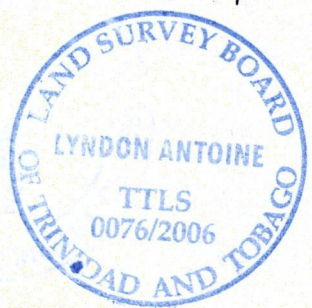
Cadastral Sheet I.21.B ^{1E}/_{6/c/2}
Ward of Tobago
Parish of St. Patrick

Vide Bk. 1185 Fol 39



Number	Delta Angle	Radius(m)	Azimuth	Chord
C1	75° 16'	2.50	221° 51'	3.05
C2	90° 41'	7.50	214° 11'	10.67
C3	88° 42'	7.50	124° 31'	10.49
C4	18° 40'	2.50	77° 04'	0.81
C5	63° 19'	7.50	42° 18'	7.87
C6	34° 12'	2.50	05° 01'	1.47

Approved 
 Director of Surveys
 2007-02-06

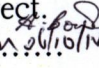


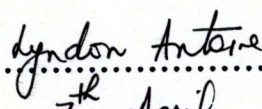
SCALE 1:1000

Bearings are grid based on solar observations

Distances are in metres

PLAN of 9 parcels of land coloured pink in the Ward of Tobago
 Containing together seven thousand one hundred and fifty two point one square metres.
 Surveyed by me, with due authority on 3rd November 1999.
 In accordance with Regulation 25 (1) of the Land Surveyors' Regulations 1998, I certify that this
 plan is correct.

Checked by  2007-1-31
 Entered.....


 7th April

Trinidad & Tobago Land Surveyor..... 2006.

Path: \\Server\L\A067\VALEXAND.dwg

- 1 - Vol. 4900 fol. 537 Eleanora Alexander.
- 2 - Vol. 4900 fol. 539 Eileen Trim Horsford
- 3 - Vol. 4900 fol. 541 Ann Trim Stanley
- 4 - Vol. 4900 fol. 543 Eleanora Alexander & Eileen Trim Horsford
- 5 - Vol. 4900 fol. 545 Philmore Trim
- 6 - Vol. 4900 fol. 547 Nyssa Dawn Corria
- 7 - Vol. 4900 fol. 549 Stephen Trim
- 8 - Vol. 4900 fol. 551 Holman Trim
- 9 - Vol. 4900 fol. 553 Garth Trim

