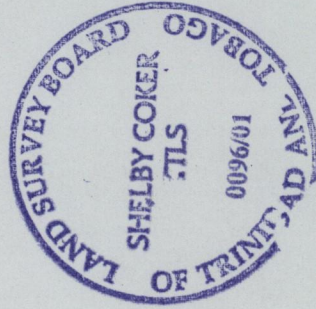
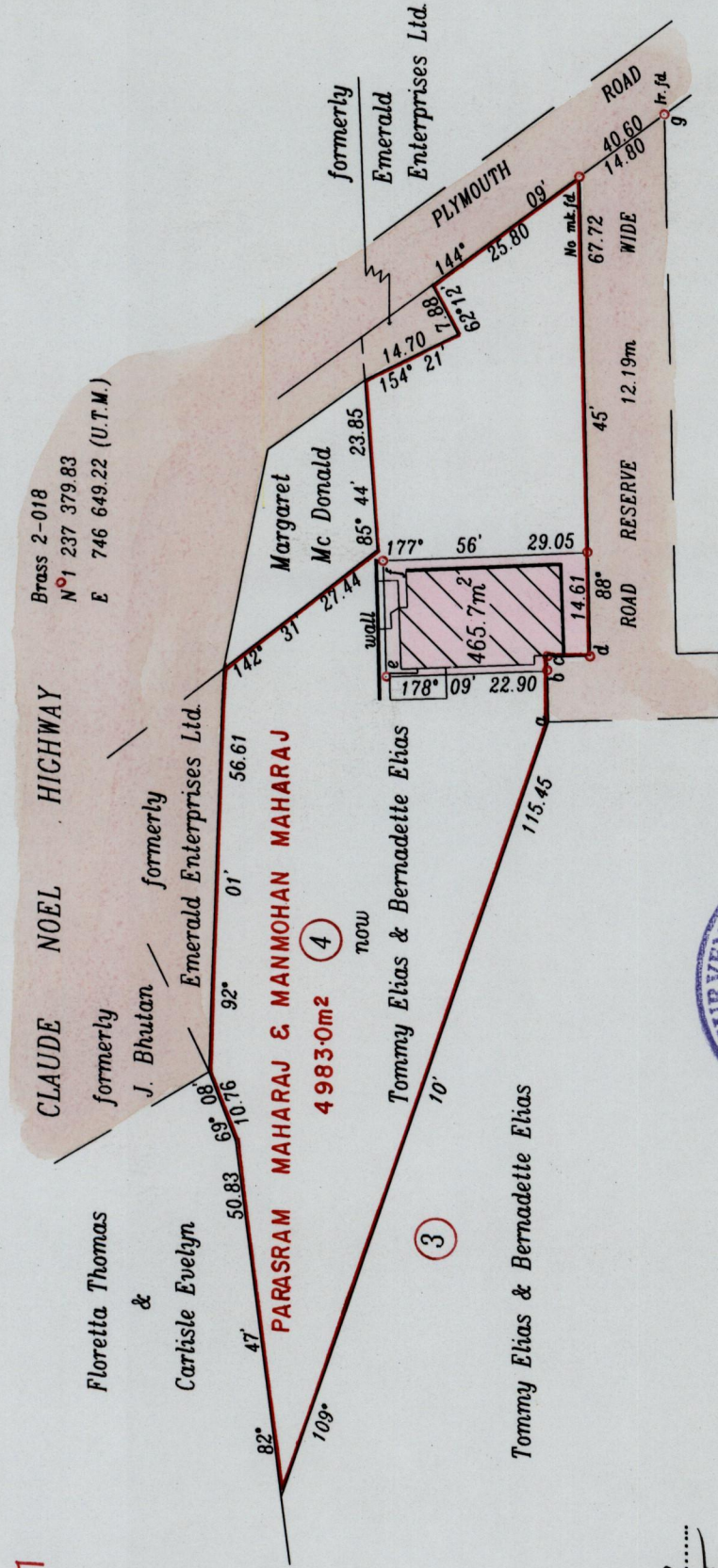


LINE	BRC.	DIST.
Brass 2-018-g	142° 38'	107.73
a - b	88° 45'	7.18
b - c	88° 45'	1.96
c - d	178° 45'	6.10
e - f	88° 34'	16.40



Approved: *[Signature]*
Director of Surveys
2003.12.31

Bearings are grid based on solar observations

o denotes nail put except otherwise stated

PLAN of a parcel of land coloured pink in the Ward of Tobago

Containing four hundred and sixty five point seven square metres

Surveyed by me, with due authority, on 23rd January 2001

In accordance with Regulation 25(1) of the Land Surveyors' Regulations 1998, I hereby certify that this plan is correct

Checked by: *[Signature]* 29-12-03

Entered on:

[Signature]

Trinidad and Tobago Land Surveyor (S.A.) March 2001

See Plan F.J. 99, Bk. 1049:221

SCALE 1:1000

Distances are in metres