

1300

31

R.P.O. Vol. 74
C.T. Vol. 3411

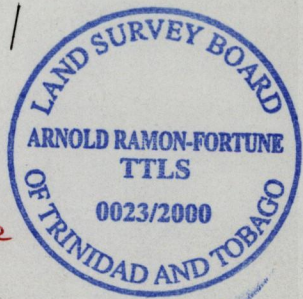
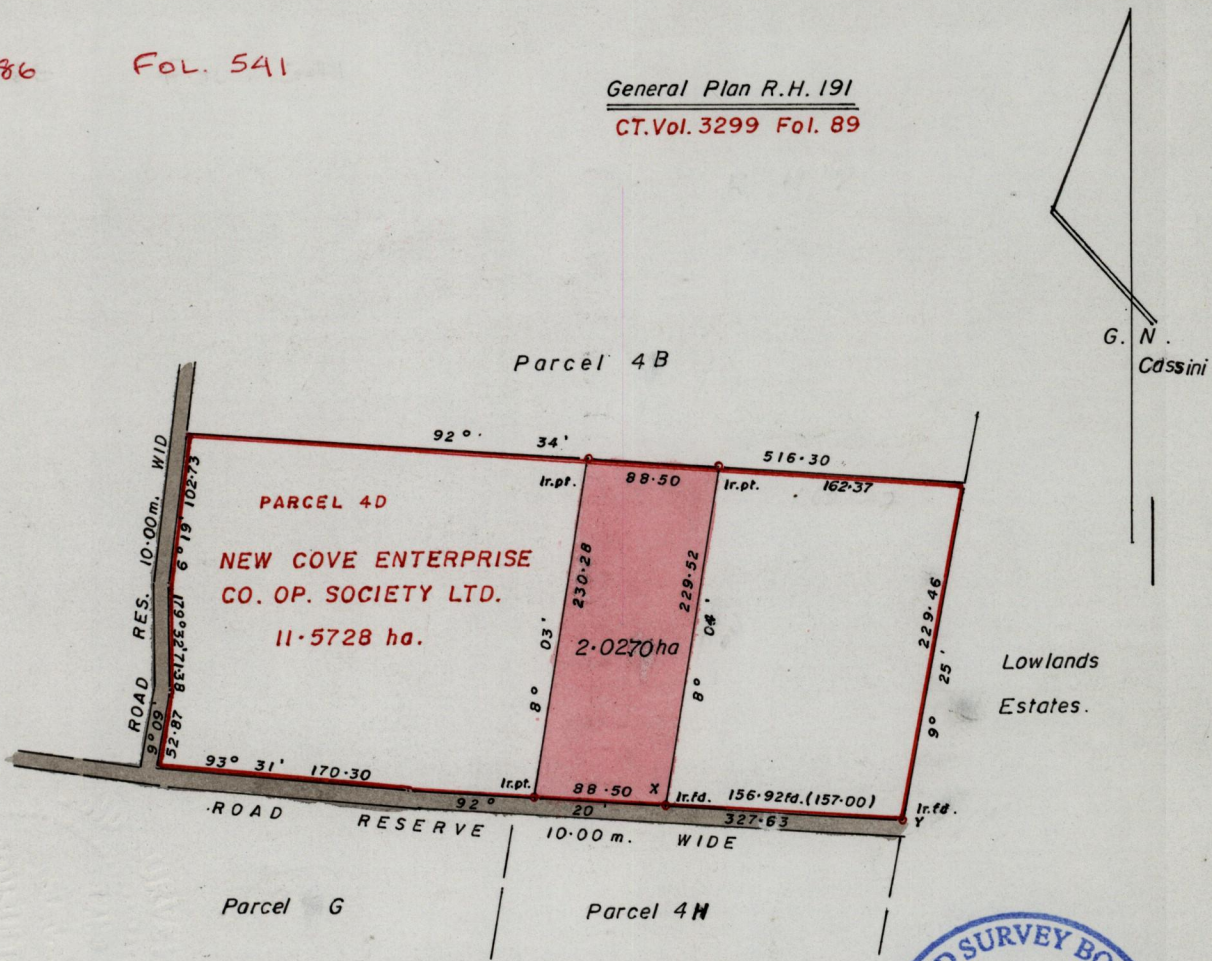
Fol. 21
Fol. 513

Ward of Tobago
Parish of St. Patrick
County of St. Patrick
Cadastral Sheet 1.21.

15
5a
I.J.
2/a, 2/c, 8 2/d.

VOL 4286 FOL. 541

General Plan R.H. 191
CT.Vol. 3299 Fol. 89



Approved *[Signature]*
 Director of Surveys
 2007-07-12

C. Anderson, G. Burnette
 & Oss.

Bearings are based on Marks. fd. (X-Y = 92°20'156.92)

SCALE 1/5000
 minutes Distances are in metres

Note: To obtain compass bearings add/subtract
 PLAN of a Parcel of land coloured pink in the Ward of Tobago
 Containing two point zero two seven zero hectares

Surveyed by me, with due authority, in February 2000
 In accordance with Rule 25 (1) of the Land Surveyors' Regulations 1998,
 I certify that this plan is correct.

Checked by *[Signature]* 12.07.18

[Signature] T.T.LS ARICS.
 Land Surveyor, Trinidad 25th February 2000.