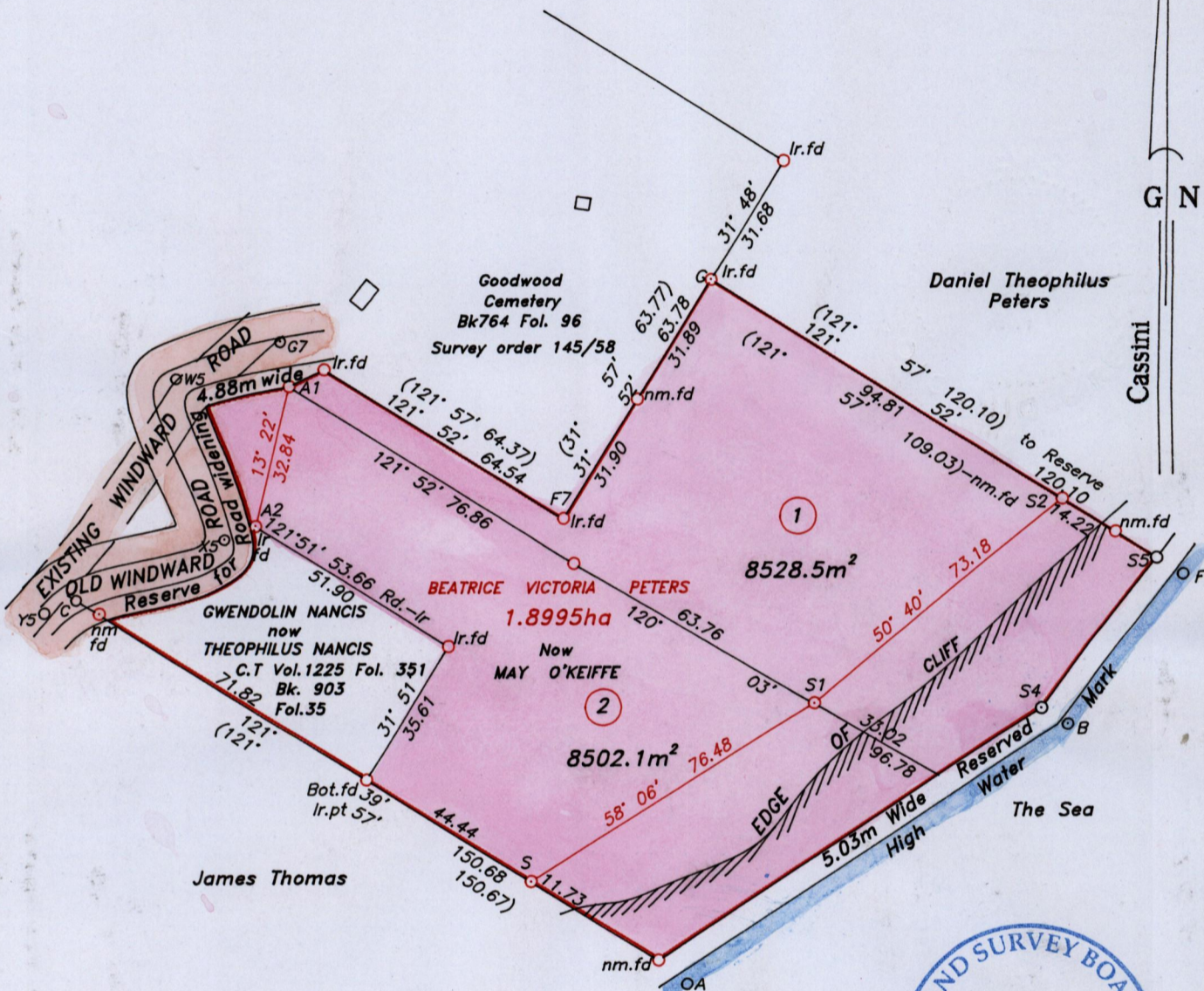


U.P.R.N.....
 R.P.O Vol.739 Fol. 243
 C.T Vol. Fol.
Vol 4624 Fol. 445

Cadastral Sheet I.19.E
 Ward of Tobago
 Parish of St. Mary

Previous plan
 Bk. 694 Fol.20
 Bk. 964 Fol.41
 S.O 271/31



LINE	AZIMUTH	DISTANCE
A1-Ir.fd	64° 35'	8.92
G-F	121° 51'	127.14
F-B	217° 14'	43.05
F7-G7	301° 51'	76.50
G7-W5	250° 56'	25.27
W5-X5	163° 10'	38.54
X5-Y5	247° 55'	44.46
C-A	121° 39'	165.96
S4-S5	37° 14'	43.05
nm.fd-S4	56° 52'	104.69



Approved *[Signature]*
 Director of Surveys

- Denotes peg put.
- ⊙ Denotes iron put, except otherwise stated.

SCALE 1:1500

Bearings arc grid based on solar observations

Distances are in metres

PLAN of 2 parcels of land coloured pink in the Ward of Tobago

Containing together one point seven zero three one hectares.

Surveyed by me, with due authority on 23rd September 2001.

In accordance with Regulation 25 (1) of the Land Surveyors' Regulations 1998, I certify that this plan is correct.

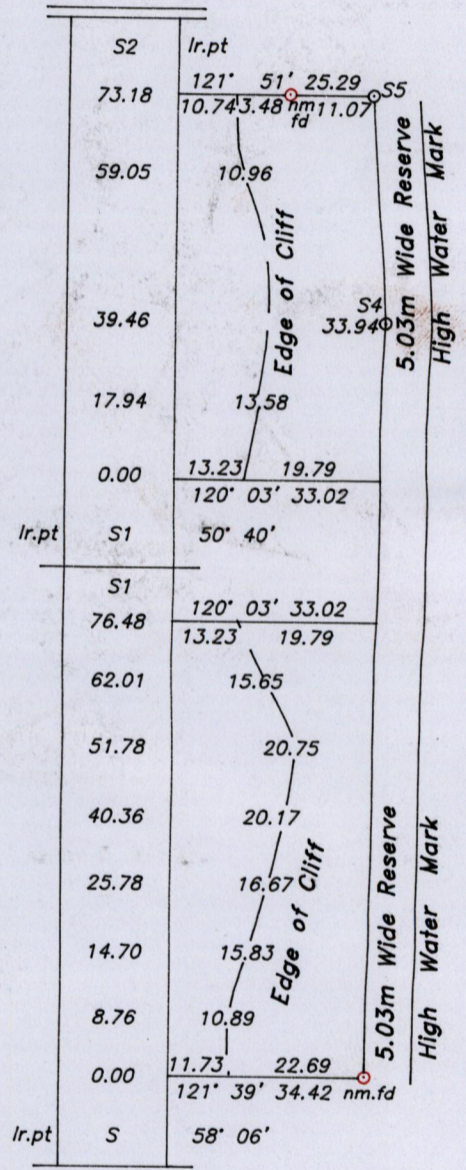
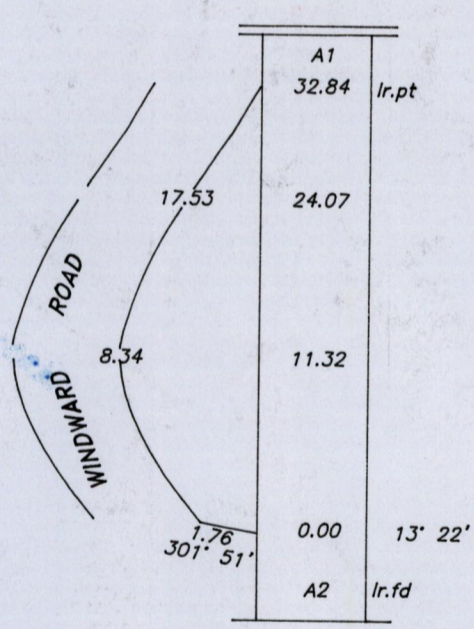
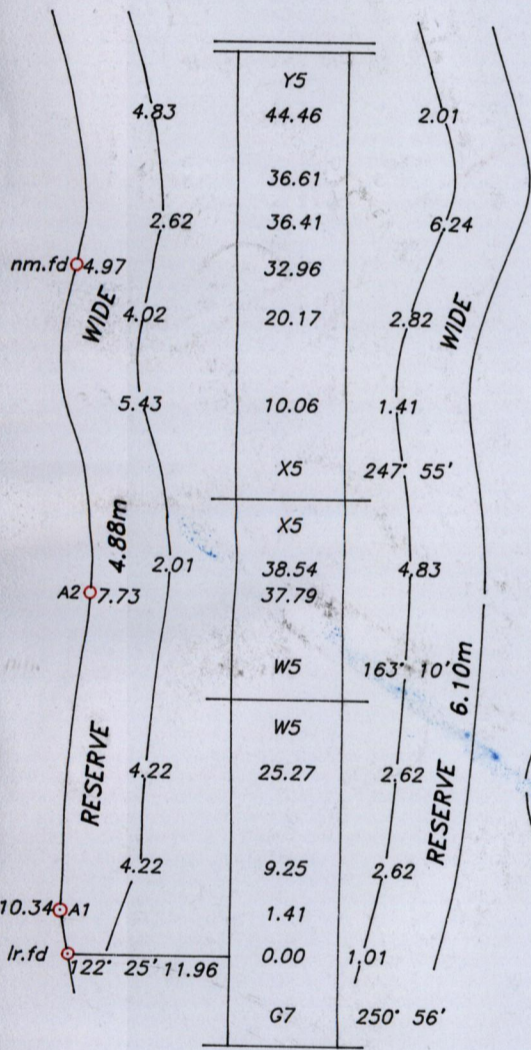
Checked by *[Signature]*
 Entered.....

Lyndon Antoine
 11th November

Trinidad & Tobago Land Surveyor..... 2003.

1 Vol 4624 fol 463 CAMMIAN Mapp.

2 Vol 4624 fol 453 Patricia Wharwood.



21 NOV 2003
Lands and
Surveys
Division

1259/140