

No 3847

Vol. 4299 Fol. 393

R.P.O. Vol. 2153

Fol. 461

C.T. Vol.

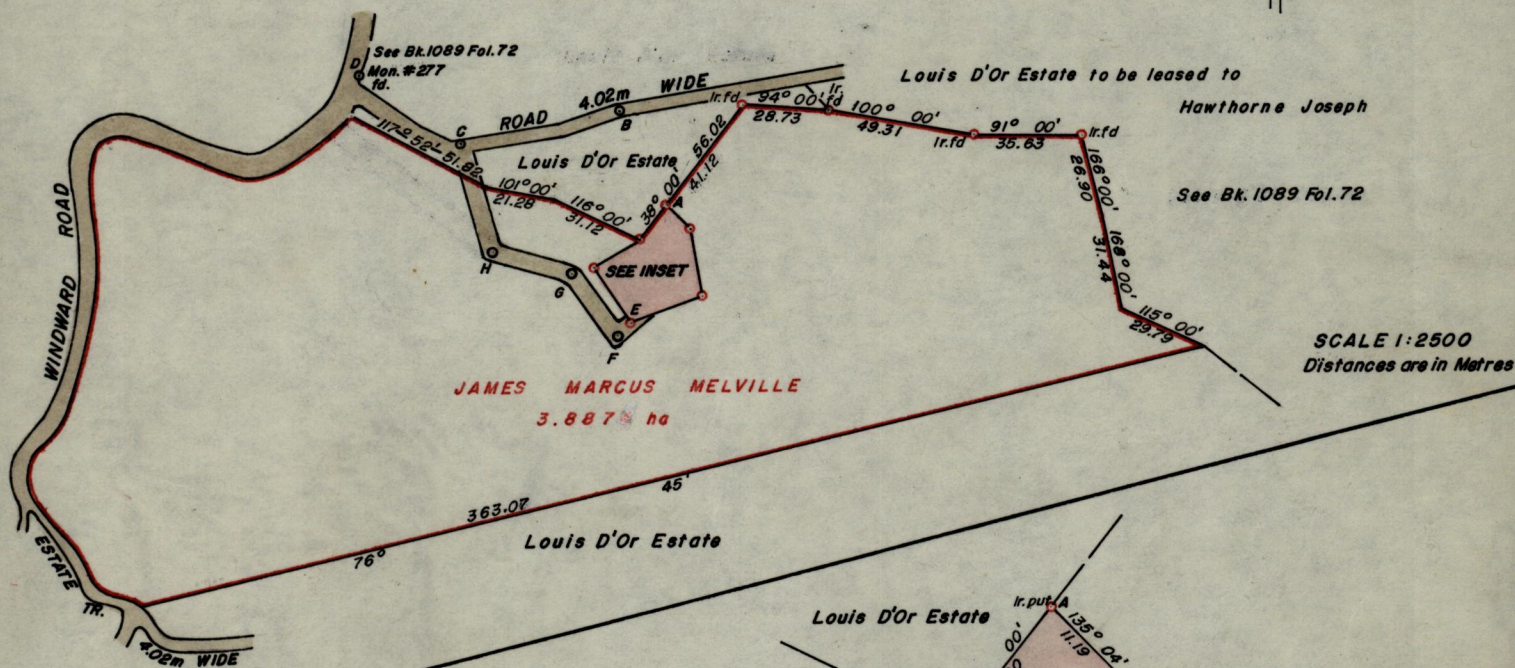
Fol.

Survey Order No.100/1953

Ward of Tobago

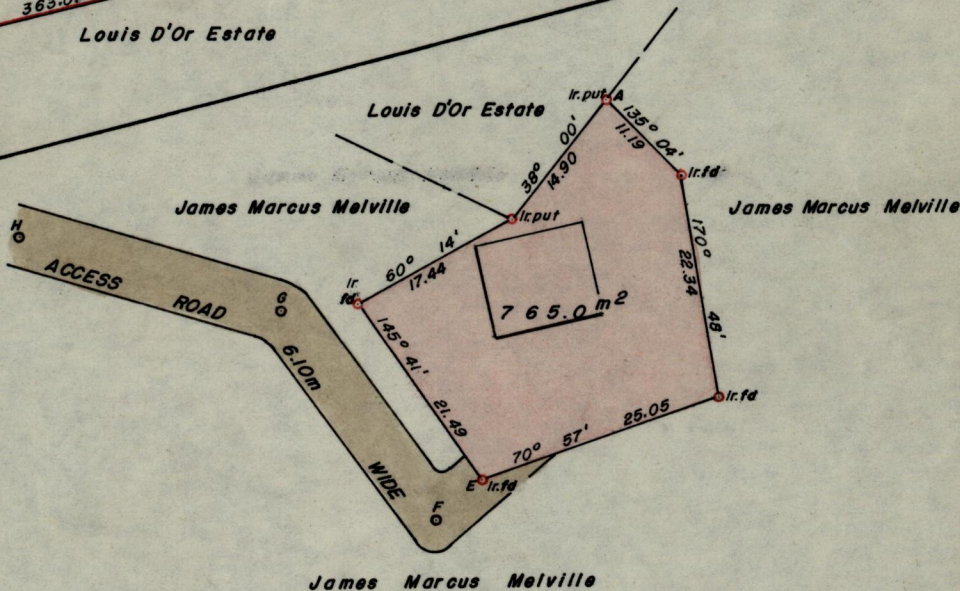
Parish of St. Paul

Cadastral Sheet I.15. ^{3H}/_{4/a}



SCALE 1:2500
Distances are in Metres

STA.	BEAR.	DIST.
A - B	333° 34'	35.74
B - C	299° 15'	53.76
C - D	303° 54'	41.01
E - F	230° 17'	6.11
F - G	324° 24'	25.63
G - H	286° 01'	27.14
H - C	343° 08'	37.30



Approved

HJB Joseph
Director of Surveys
PS-5-29

E.I. 48.

George Mc Eachnie

SCALE 1:750
minutes

Distances are in Metres

Note: To obtain compass bearings add/subtract

PLAN of a Parcel of land coloured pink in the Ward of Tobago

Containing seven hundred and sixty five square metres

Surveyed by me, with due authority, in July 1984

I certify that I have complied with rule 76 under section 14(2)(d) of the Land Surveyors' Ordinance 1952, and that this plan is correct.

Checked by

85-5-28

Land Surveyor, Trinidad

Hugo Thomas
18th September 1984