

1300/24

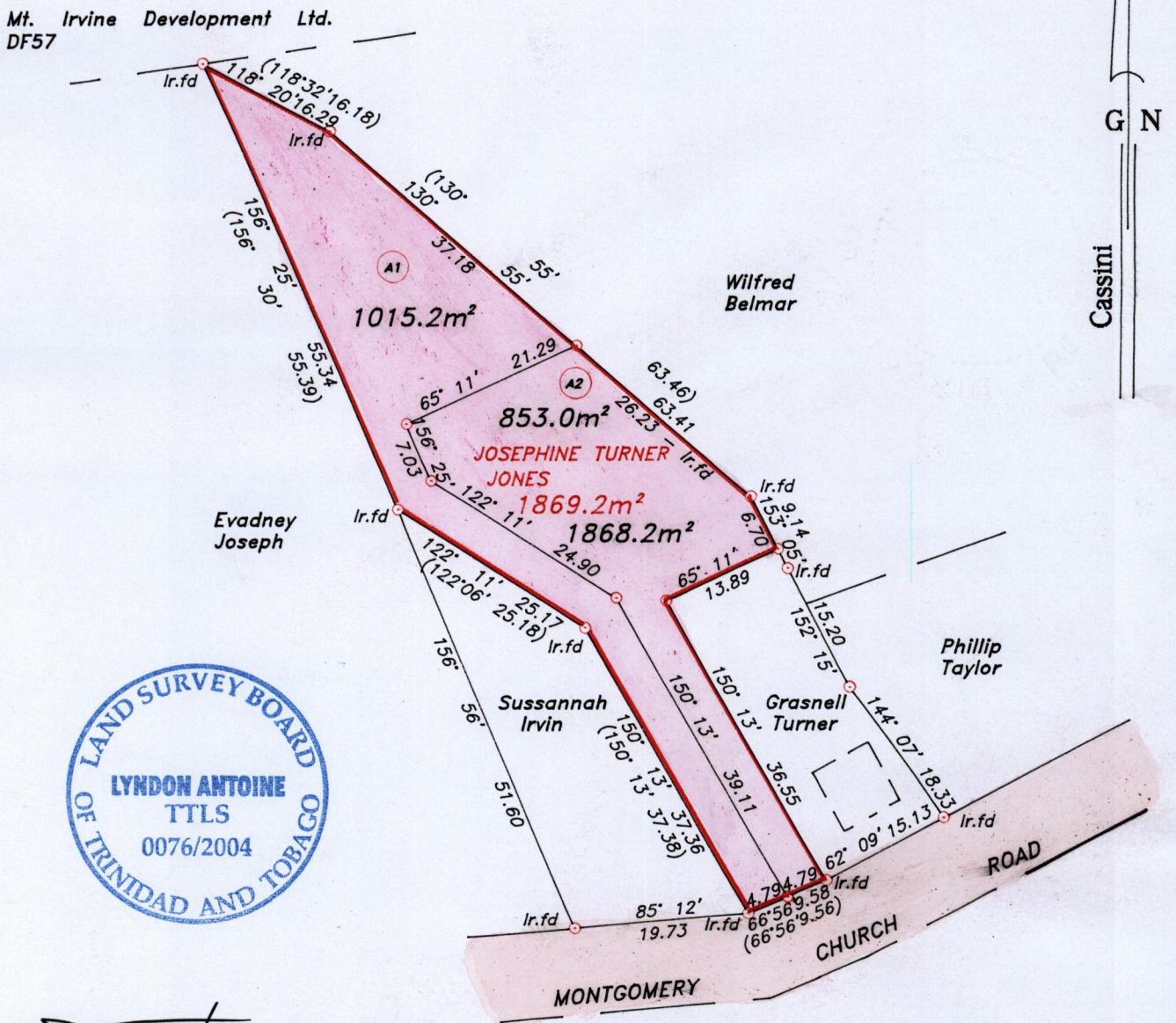
VOL. 4618 FOL. 177

U.P.R.N.....  
R.P.O Vol. Fol.  
C.T Vol. 3471 Fol. 279

Cadastral Sheet I.16.L <sup>1F</sup>/<sub>5/a</sub>  
Ward of Tobago  
Parish of St. Patrick

BK. 1170  
Fol. 67

Mt. Irvine Development Ltd.  
DF57



Approved *[Signature]*  
Director of Surveys  
2004.8.4

○ Denotes iron pin, except otherwise stated.

Bearings arc grid based on solar observations

Distances are in metres

SCALE 1:750

PLAN of 2 parcels of land coloured pink in the Ward of Tobago  
Containing together one thousand eight hundred and sixty eight point two square metres.  
Surveyed by me, with due authority on 1st May 2002.

In accordance with regulation 25 (1) of the Land Surveyors' Regulations 1998, I certify that this plan is correct.

Checked by *[Signature]*  
Entered.....

*Lyndon Antoine*  
26<sup>th</sup> February 2004

Trinidad & Tobago Land Surveyor..... 2004

A1 VOL. 4618 FOL. 191 EALTYH KING, CURT SAMPSON  
& CARLOS GRANT.

A2 VOL. 4618 FOL. 183 MARILYN JONES GLASGOW &  
TISHANNA JONES



1289/275